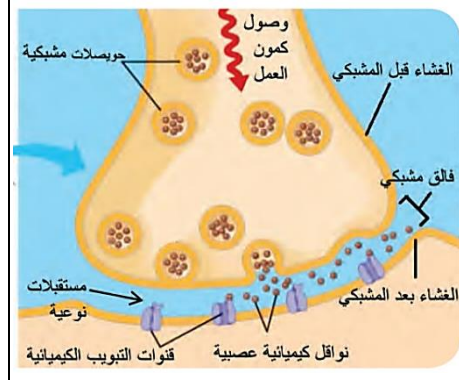
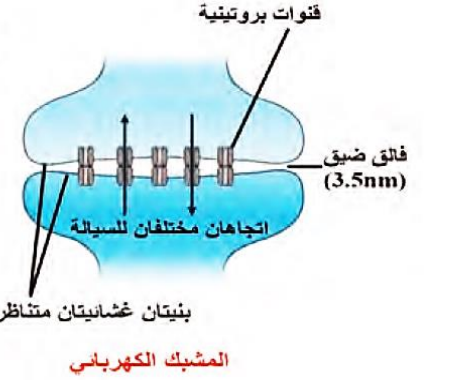
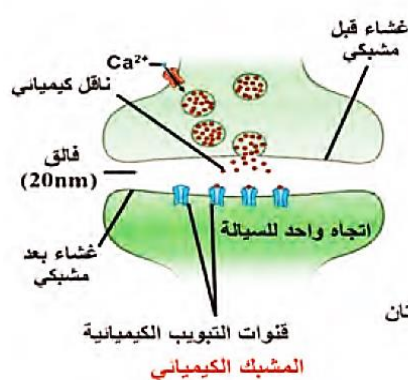
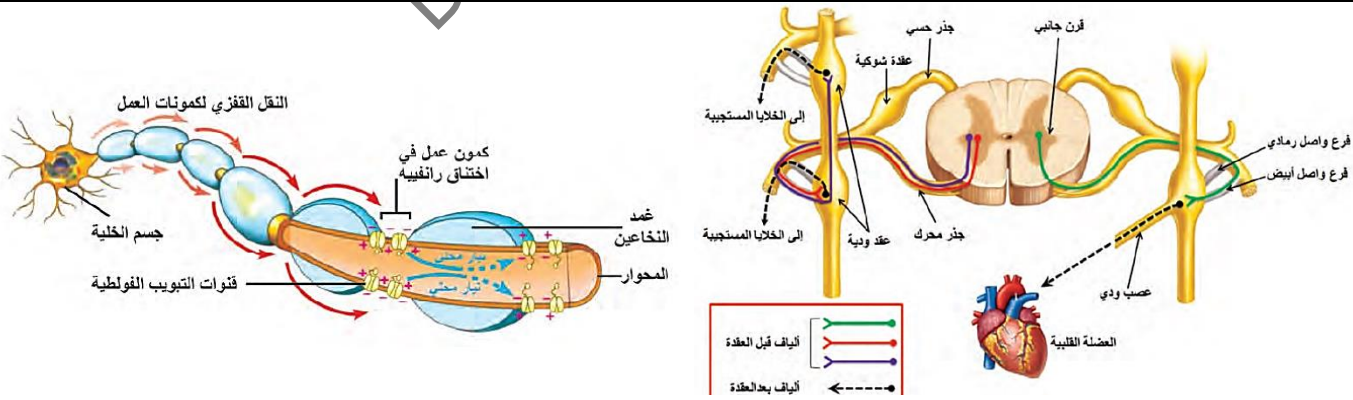
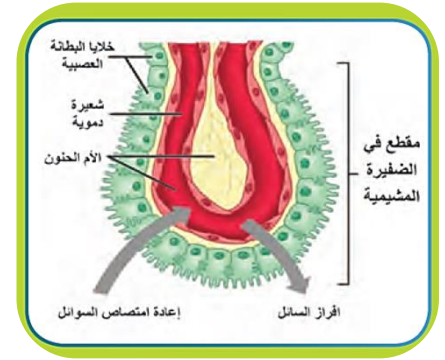
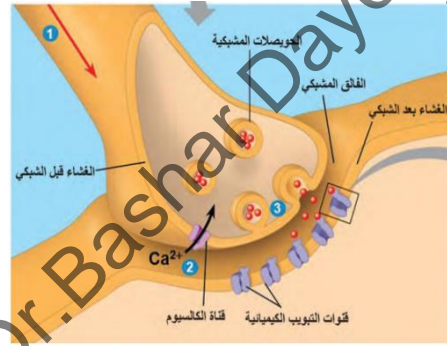
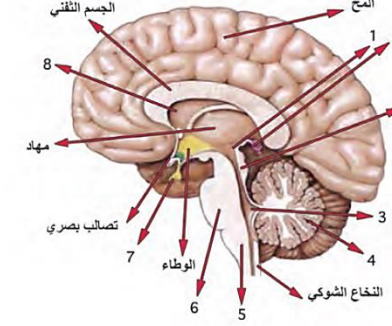
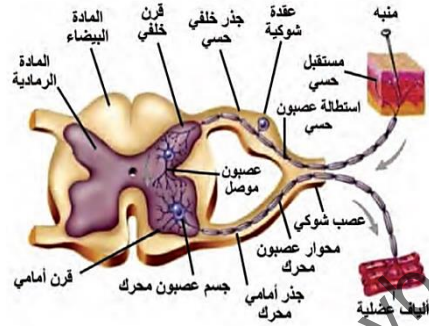
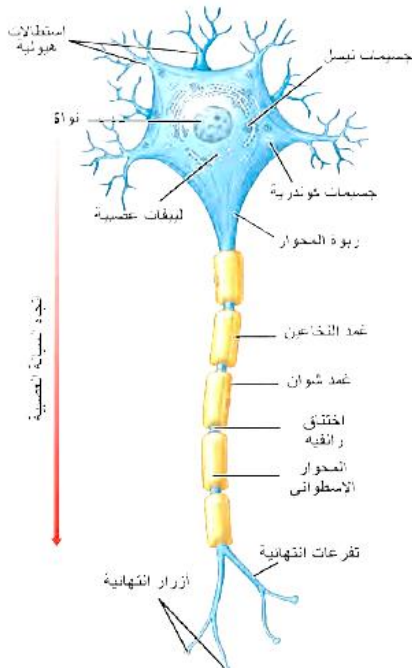
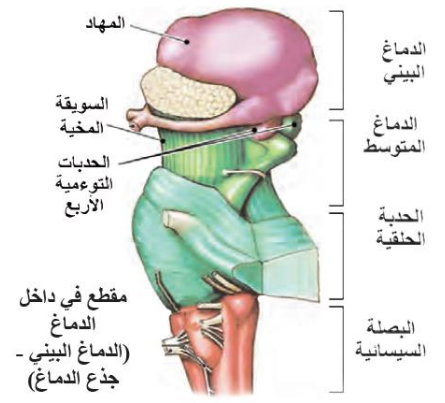
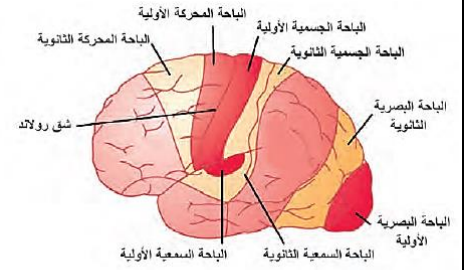
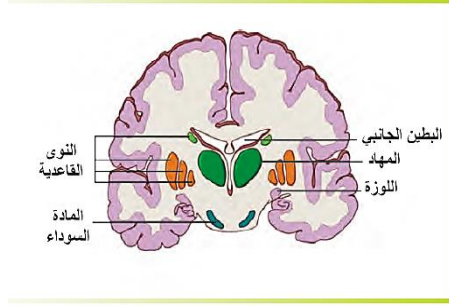
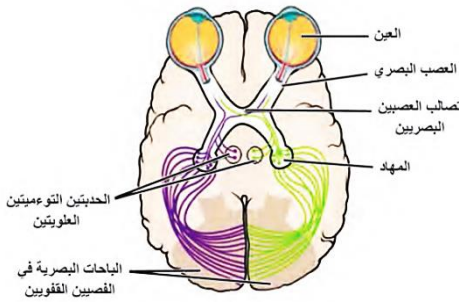
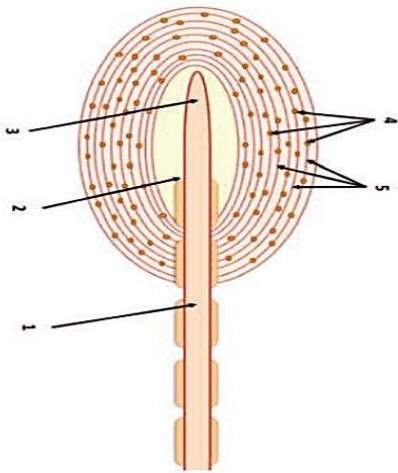
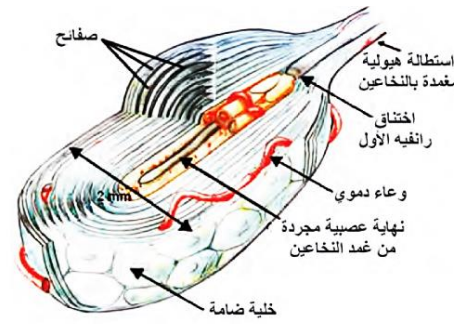
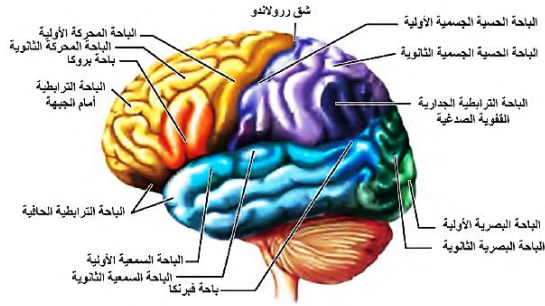


بطيئات الدماغ

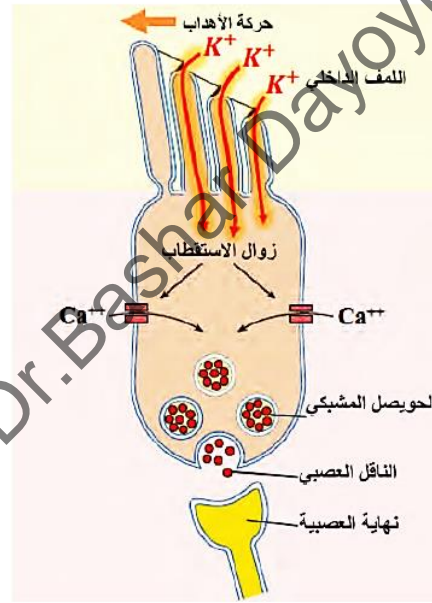




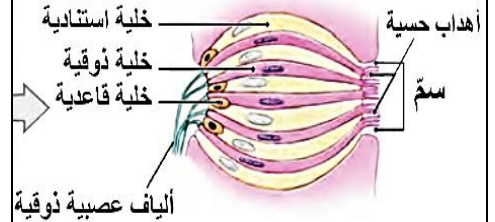
البياض القشرية في نصف الكرة المخية الأيسر



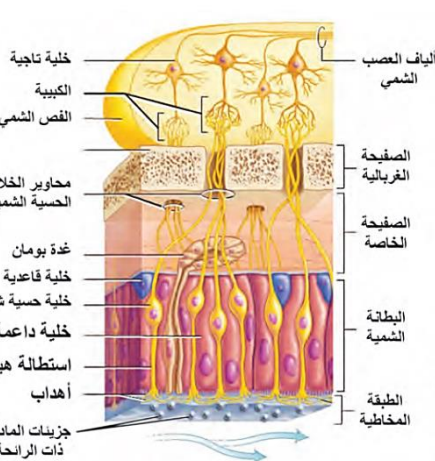
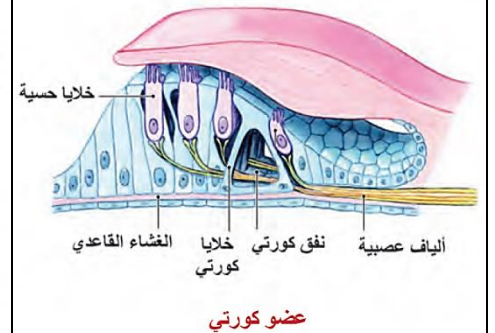
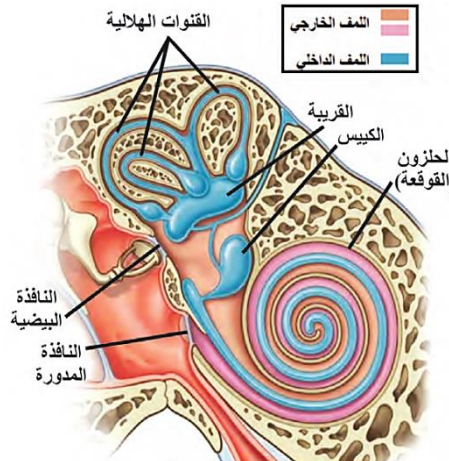
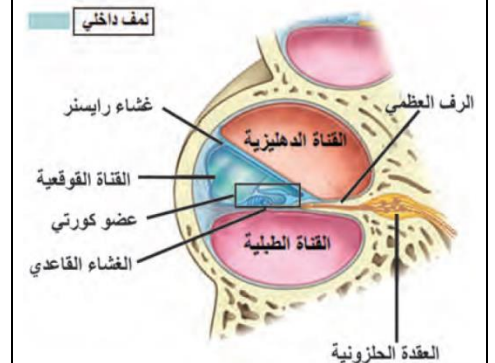
١. استئطالة هيولية خثينة مغمدة بالنخاعين.
٢. اختناق رانفيه الأول.
٣. نهاية عصبية مجردة من النخاعين.
٤. خلايا ضامة.
٥. صفائح.



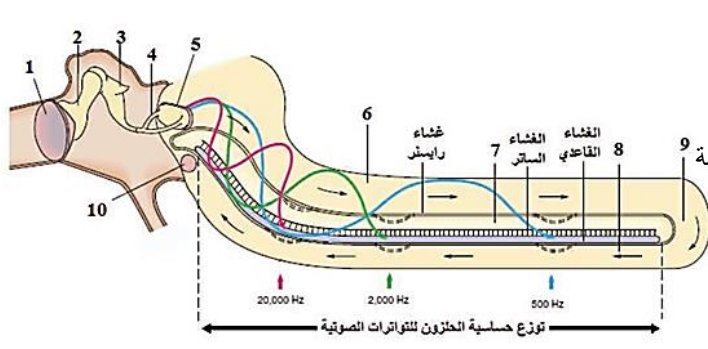
البرعم الذوقي



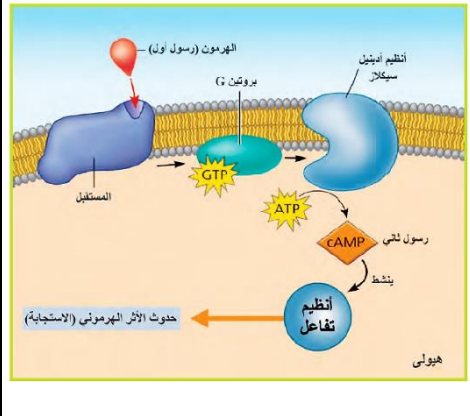
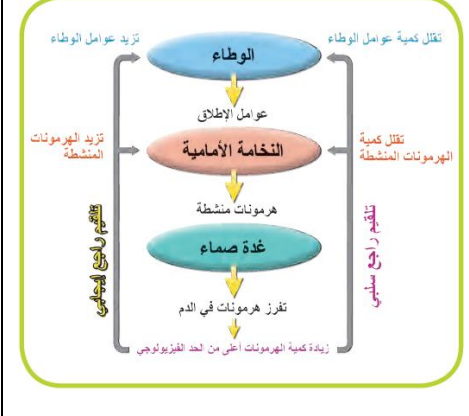
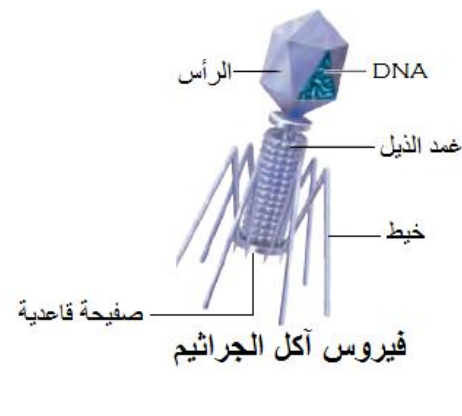
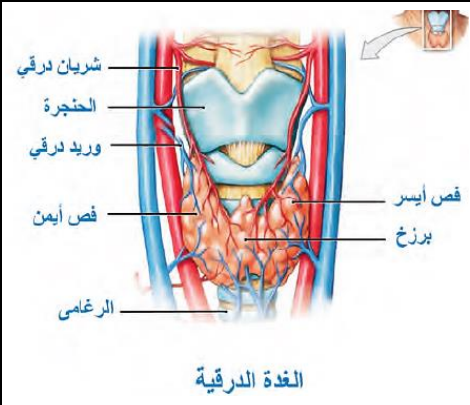
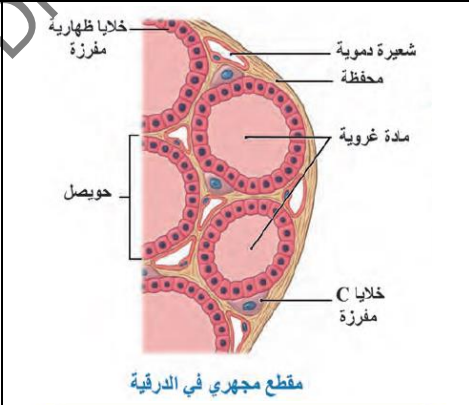
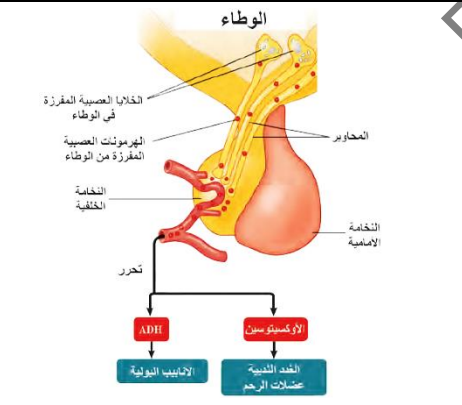
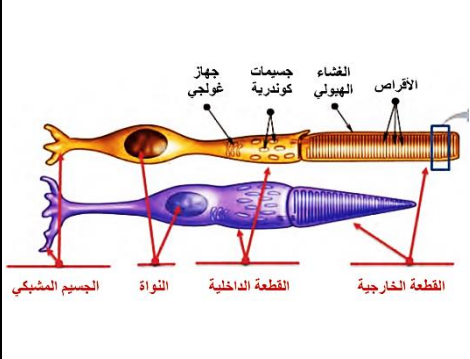
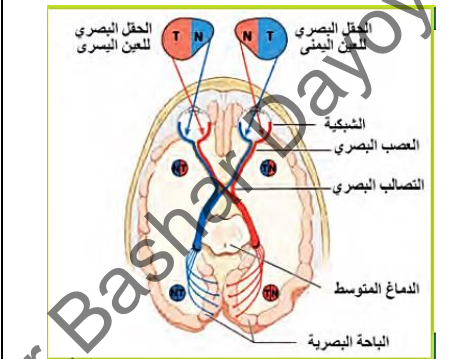
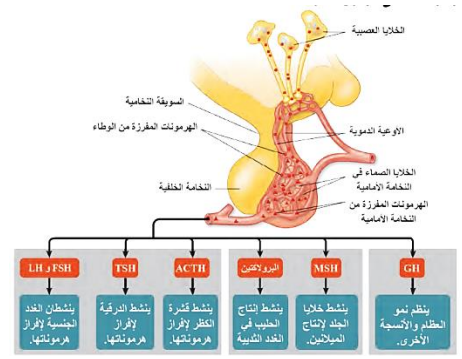
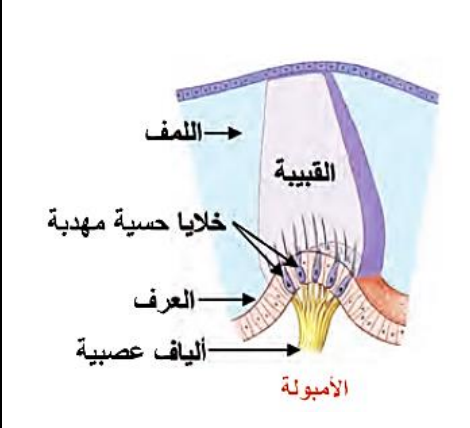
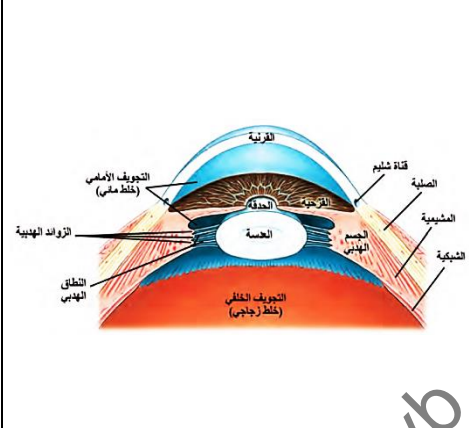
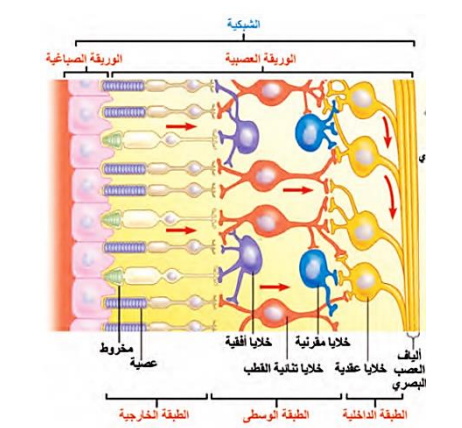
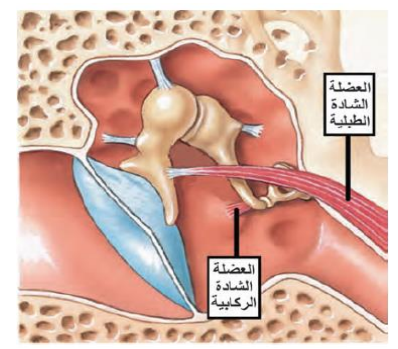
ألياف عصبية ذوقية

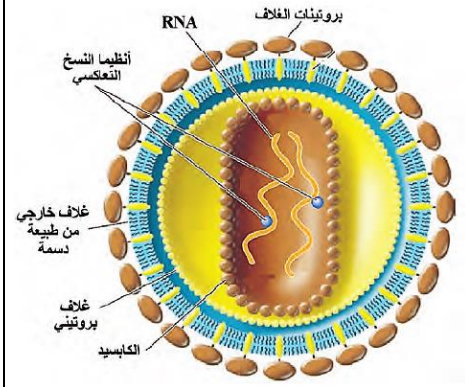
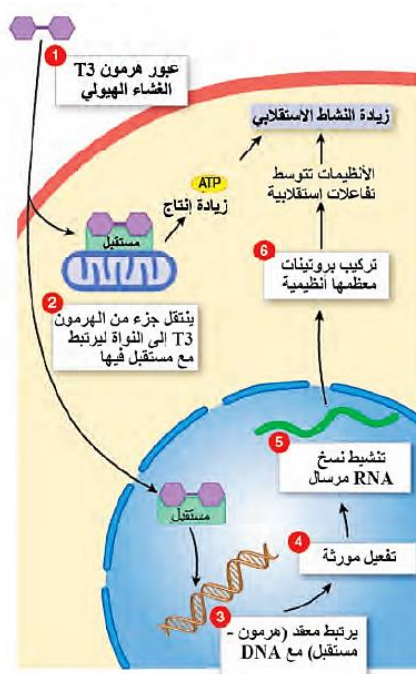
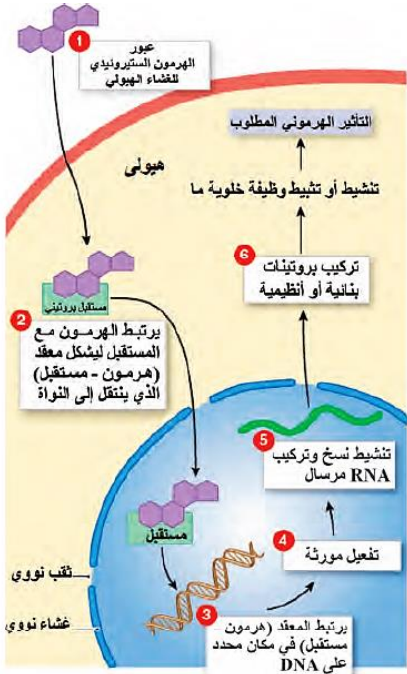


عضو كورتي

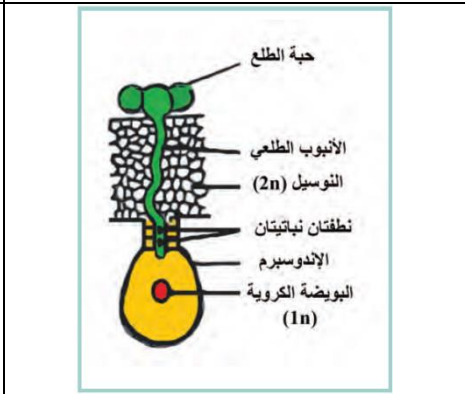
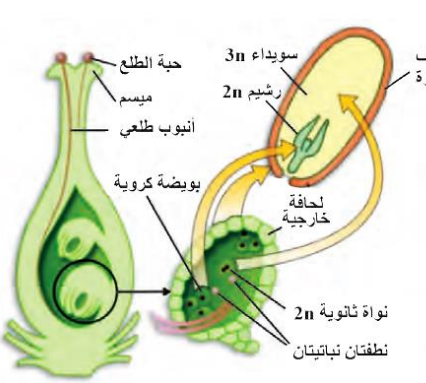
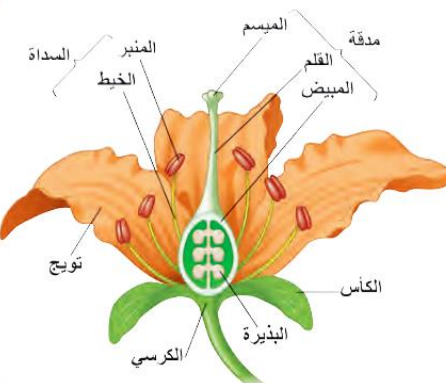
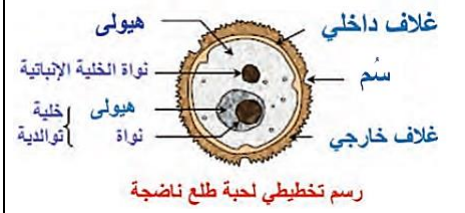
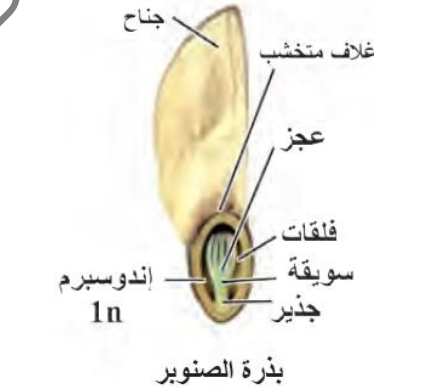
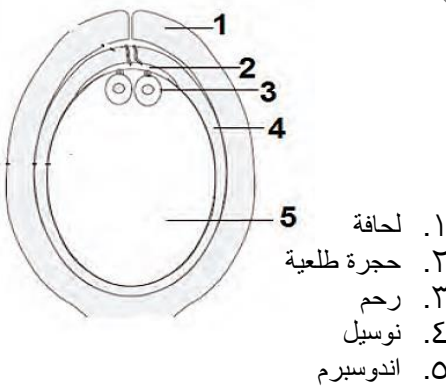
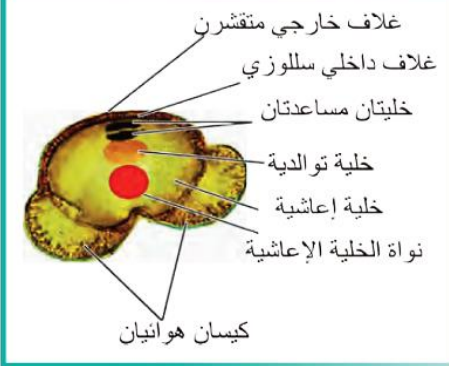


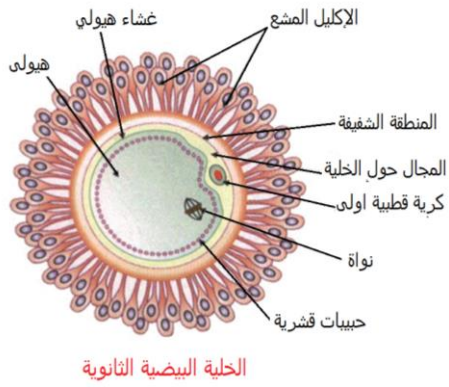
١. غشاء الطبل
٢. المطرقة
٣. السندان
٤. الركاب
٥. غشاء النافذة البيضية
٦. القناة الدهليزية
٧. القناة القوقعية
٨. القناة الطبلية
٩. الكوة القوقعية
١٠. النافذة المدورة



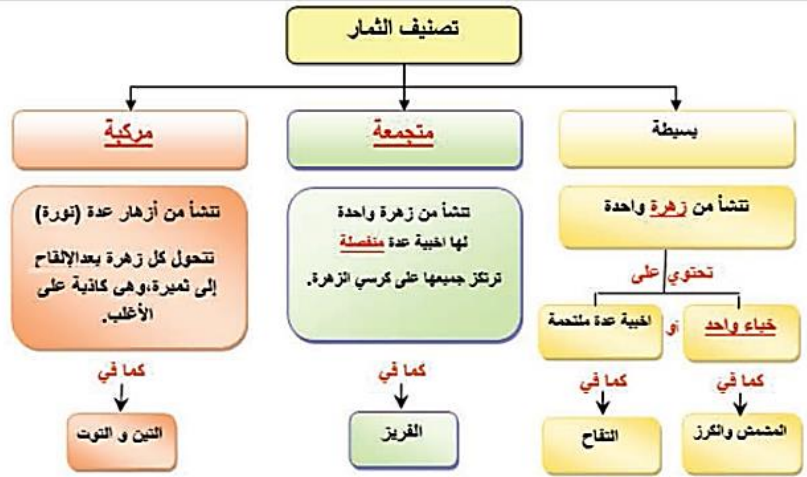


نماذج التكاثر اللاجنسي





الحلية البيضية الثانوية



Dr. Bashar Dayoyb