

Answer the following questions

First question:

Put a (✓) next to the correct sentence and a (x) next to the wrong one :

- (1) The program design, by using the computer, is one of the problem solving stages. (✓)
- (2) The project name given to the project Cannot be changed after being created. (X)
- (3) A ComboBox is a box displays a drop- down list from which one item can be selected. (✓)
- (4) The object name in the code ( lbl\_Title.Visible = False ) is Visible. (X)
- (5) Framework provides a design and execution of (.NET) applications. (✓)
- (6) The property Name is one of the properties which is common to most controls. (✓)

Second question:

Choose the correct answer between brackets :

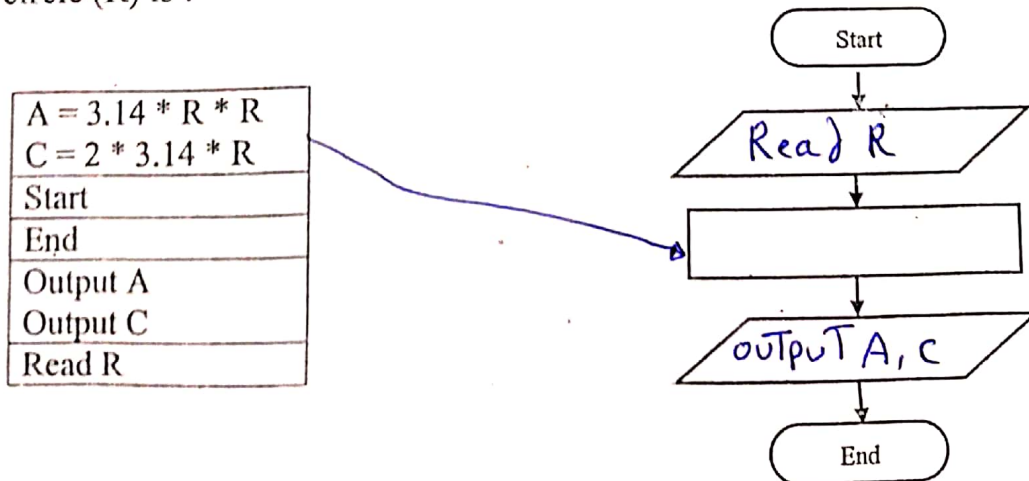
- (1) The ~~Blueprint~~ plan from which the individual objects are created, is .....  
( ~~Form~~ - ~~Class~~ - ~~Object~~ )
- (2) The property which is not active unless we Start Debugging is .....  
WindowState ( ~~ShowInTaskbar~~ - Font - BackColor )
- (3) The objective or the specific output that we want to attain, through a sequence of steps and activities and specific input, is .....  
( FlowChart - Algorithm - Problem )
- (4) To open the (Code Window) of active (Form1), we press on the key.....  
( F7 - F4 - F5 )

Third question:

First : Choose from column ( A ) what is suitable from column ( B ) :

No	A	B
1-	The procedure (called into action ) when an event occurs, is .....	Items (3)
2-	A control that enables the user to select one option from a group of options is, .....	Text
3-	A set of items displayed in the ListBox is named.....	Event Handler (1)
		RadioButton (2)

Second : Redraw the next flowchart and write the suitable code in each symbol :  
for calculating the area and circumference of a circle, given: the radius of the circle (R) is :



Answer the following questions

First question:

Put a (✓) next to the correct answer and (x) next to the wrong answer :

- (1) Typing in the label control can be changed by the user during the run-time of the programme. ( X )
- (2) The list of **properties** displayed in **Properties** window differs according to the selected element. ( ✓ )
- (3) **Program Testing** is one of the stages of problem solving. ( ✓ )
- (4) Some properties don't affect the controls unless other properties are adjusted. ( ✓ )
- (5) The property **Checked** indicates if the ( **RadioButton** ) control has been selected or not. ( ✓ )
- (6) The value of the property in the code ( **lbl\_Title.ForeColor = Color.Blue** ) is **ForeColor**. ( X )

Second question:

Choose the correct answer between brackets :

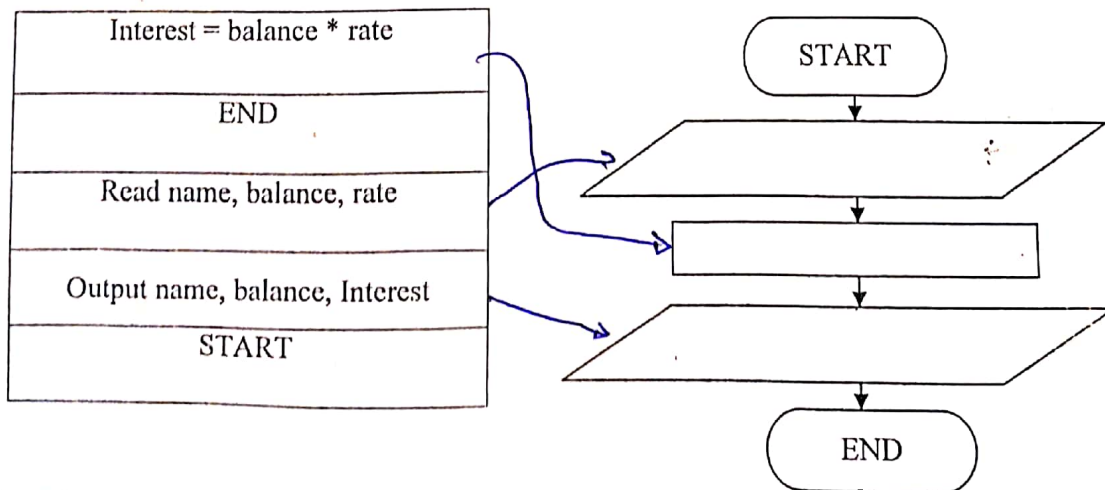
- (1) The project can be run in test mode by pressing the key ..... from the keyboard .  
( F7 - F4 - F5 )
- (2) The procedure, called into action when an event occurs is called.....  
( **Event** - **Function** - Event Handler )
- (3) Integrated Development Environment means .....  
( IPO - IDE - ERD )
- (4) A group of logically arranged procedures to be executed to attain a specific goal out of specific inputs.....  
( Algorithm - Problem Solving - Flow Chart )

Third question:

A) Match column (A) with column (B) :

A	B
1- A box that displays a drop-down list from which one item can be selected is	Class
2- The basic constructive element in Object Oriented Programming and it is created from a defined class is	ComboBox (1)
3- The window of writing codes and instructions using ( VisualBasic.Net ) language is	Object
	Code (3)

B) Re- Draw the flow chart and write the suitable code inside each symbol for calculating the interest value of the balance:



( انتهت الأسئلة )

المادة : الكمبيوتر وتكنولوجيا المعلومات ( باللغة الانجليزية ) الزمن : ساعة واحدة	امتحان ﴿ نصف العام ﴾ لشهادة إتمام مرحلة التعليم الأساسي ( العام ) للعام الدراسي ( ١٤٣٥ هـ - ٢٠١٤ م )	جمهورية مصر العربية محافظة الإسكندرية مديرية التربية والتعليم
--	--	---

**Answer the following questions**

**Q1:** Put each of the following words in the suitable place :-

- (Group<sup>2</sup>Box – Solution<sup>3</sup> Explorer – Program<sup>1</sup> Documentation – Event<sup>4</sup> Handler)
- ..... is beneficial when more than one person participate in writing the program.
  - ..... is used to group a number of controls together.
  - ..... displays a list of files and folders of the project.
  - ..... is the procedure (called into action) when an event occurs .

**Q2:** Put a (✓) next to the correct sentence and a (x) next to the wrong one :

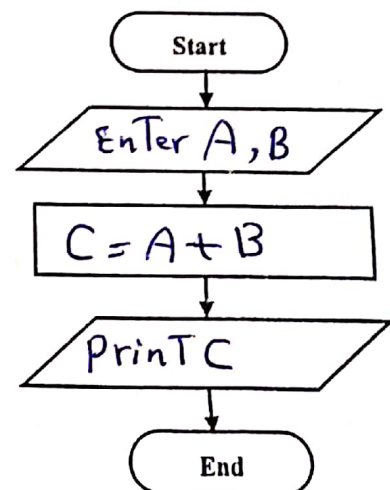
- ~~You can create more than one object from the same class.~~ (—)
- Some Properties will not be applied to controls unless we set other properties. (✓)
- Performing step by step instructions (Algorithm) is the first stage of problem solving. (x)
- The property **BorderStyle** specifies the border style of the control (Label). (✓)
- When you create a new project, a copy of the project is saved in the memory. (✓)
- The properties can be set only from the properties window. (x)

**Q3:A)** Choose from column (A) what is suitable from column (B) then rewrite the sentence:

No	A	B
1-	A property for changing the background color of the Form's window.	CodeWindow
2-	Through it , instructions and codes can be written .	Problem <sup>3</sup>
3-	An objective or an output that we have to achieve.	Font BackColor <sup>1</sup>

**B)** Complete the missing parts in the following flowchart and redraw it to calculate the sum of the two numbers entered and then display the result.

Considering that  
Number1 is (A)  
Number2 is (B)  
The Result is (C)



﴿ انتهت الأسئلة ﴾

Answer the following questions

Q1: Put each of the following words in the suitable place :-

( <sup>②</sup> Button - <sup>①</sup> Program Testing - <sup>③</sup> Compiler - <sup>④</sup> Value )

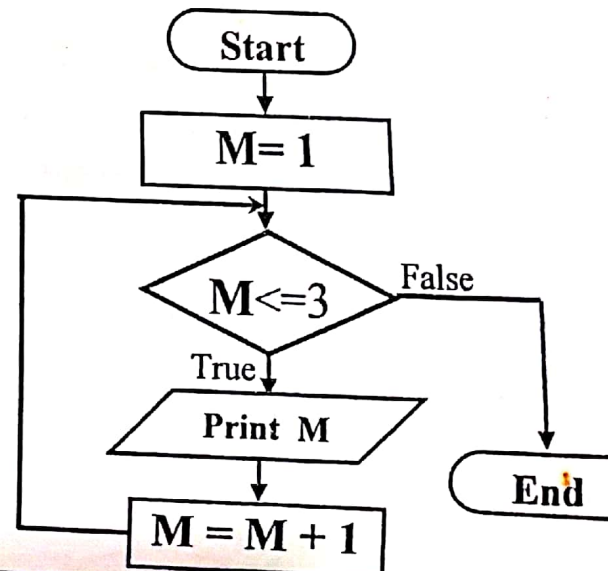
- (1) ..... is one of the stages of problem solving which we can through it check the errors and debug them.
- (2) ..... is one of the controls, which the user can click to perform a specific task .
- (3) ..... is for translating the instructions to machine language for the computer to deal with .
- (4) To set the properties programmatically we use the syntax ControlName.Property= .....

Q2: Put (✓) next to the correct sentence and (×) next to the wrong one :

- (1) <sup>Procedures</sup> ~~Methods~~ are actions to be performed on objects, causing certain behavior on them. (✓)
- (2) The default value of the property (Name) differs from the property (Text) in the Form window. (×)
- (3) The programming code for writing your name five times is considered a looping process. (✓)
- (4) The content of the (Label) control cannot be changed by the user during the run-time. (✓)
- (5) The properties of the controls can be set from the (Toolbox) . (×)
- (6) To end the program, type the command (End) in the code window. (✓)

Q3: Choose the correct answer between brackets:

- (1) If we set the value of the property (ControlBox) to be (False) then the (ControlBox) ..... ( hides - appears - will not be enabled )
- (2) The procedure name in the code window is composed of .....  
( Object and Event name - Event name - Object name )
- (3) In the following flowchart the number of printing the value M is ..... times.  
( 4 - 3 - 2 )



المادة : الكمبيوتر وتكنولوجيا المعلومات ( باللغة الانجليزية ) الزمن : ساعة واحدة	امتحان نصف العام لشهادة إتمام مرحلة التعليم الأساسي ( العام ) للعام الدراسي ( ١٤٣٦ هـ - ٢٠١٥ م )	جمهورية مصر العربية محافظة الإسكندرية مديرية التربية والتعليم
--	--	---

Answer the following questions

Q1: Put a (✓) next to the correct sentence and a (x) next to the wrong one :-

- (1) To open the code window press F4 key from the keyboard . ( X )
- (2) The execution engine ( CLR ) is one of the .NET Framework components. ( ✓ ) *RunTime*
- (3) ~~The code ( Label1.Visible = True ) is used to show the label1 control.~~ ( X )
- (4) Program testing is the last stage in Problem Solving . ( X )
- (5) A value should be assigned to any property . ( ✓ )

Q2: Write what the following sentences indicate :-

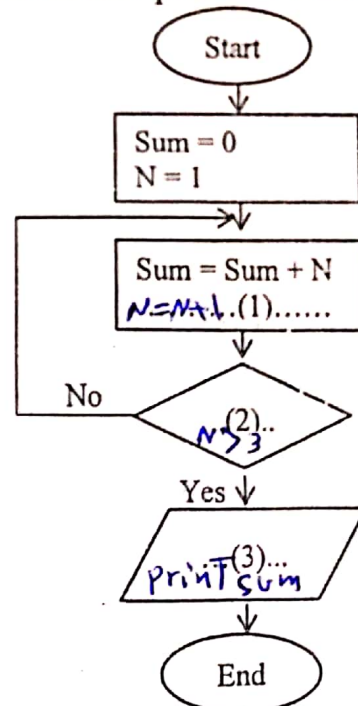
- (1) A control which has a special property ( PasswordChar ) ( *TextBox* )
- (2) A group of logically arranged procedures to be executed to attain a specific goal. ( *Algorithm* )
- (3) It contains controls that can be placed on the form . ( *ToolBox* )
- (4) The procedure ( called into action ) when an event occurs. ( *Event Handler* )

Q3: Choose from column (A) what is suitable from column (B):

No	A	B
1-	The effect of the property which is not active unless we Start Debugging	ListBox (2)
2-	A control used for displaying a list of items .	-Project
3-	<del>The menu through which a new window (Form) can be added to the project.</del>	Flowchart (4)
4-	Iterations and branching can be represented through .	StartPosition <i>WindowState</i> (1)

Q4 : Complete the missing parts in the following flowchart to print the sum of integer numbers from 1 to 3 .

Considering that The number is N , The total is Sum.



المادة : الكمبيوتر وتكنولوجيا المعلومات ( باللغة الانجليزية ) الزمن : ساعة واحدة	مديرية التربية والتعليم	محافظة الإسكندرية	جمهورية مصر العربية
	امتحان ( تمكيني نصف العام ) لشهادة إتمام مرحلة التعليم الأساسي ( العام ) للعام الدراسي ( ١٤٣٦ هـ - ٢٠١٥ م )		

Answer the following questions

Q1: Put (✓) next to the correct sentence and (x) next to the wrong one :

- (1) The Button control is used for displaying the list of items . ( X )
- (2) A (Class) is the Blueprint from which the objects are created. ( ✓ )
- (3) Program design is the first stage in problem solving stages . ( X )
- (4) The procedure name is composed of ( object name , event name ) . ( ✓ )
- (5) There are some common ( properties ) among ( Controls ) . ( ✓ )
- (6) The property (Font) cannot be set programmatically . ( X )

Q2: Put each word between brackets in the suitable place :-

Windows State Show In Taskbar . Code Window . Back Color . Event Handler . Save All )  
 (2) (3) (4) (5) (1)

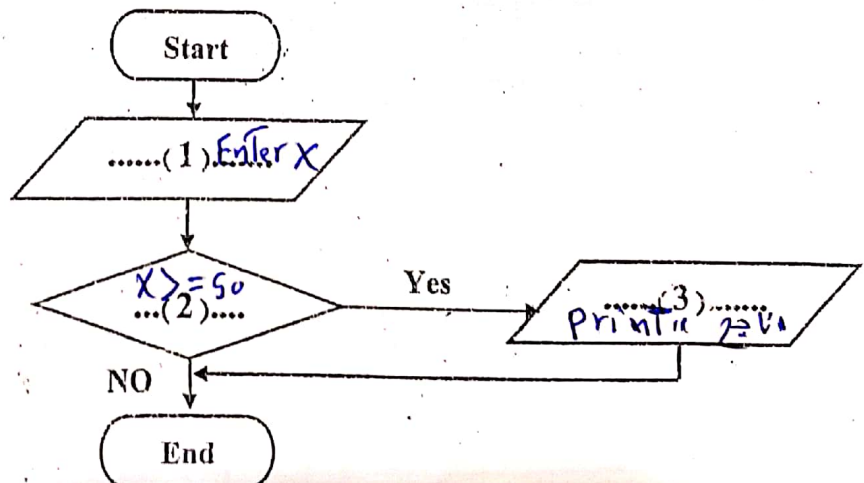
- (1) To save a project from the file menu , we select .....
- (2) A property which won't be active unless we start Debugging is .....
- (3) We can write instructions and codes through .....
- (4) To change the background color of the form , we use the property .....
- (5) The procedure which is ( called into action ) when an event occurs is .....

Q3: Match from column (A) with its suitable from column (B) :

(A)	(B)
1- The basic constructive element in Object Oriented programming is called	Problem definition (3)
2- The control which is used to select one option from a group of mutually exclusive option is	Object
3- The identification of required outputs , available inputs and arithmetic and logical operations is called	RadioButton (2)

Q4:

Complete the following Flowchart to print the word " ناجح " whether the score is greater than or equal 50 .



Answer the following questions

Q1: Put each of the following words in the suitable place : -

( Problem Definition - CheckBox - Form1 - Value - MaxLength )

- (1) The control used to select more than one option in the same time is ..... (3)
- (2) When you create a new project, a window will appear in naming ..... (1)
- (3) The identification of required outputs, available inputs and arithmetic operations is called ..... (2)
- (4) To set any property, We use the statement ( ControlName.Property= ..... ) (4)
- (5) The property that specifies the maximum number of characters in the ( TextBox ) is ..... (5)

Q2: Put a (✓) next to the correct sentence and a (x) next to the wrong one : -

- (1) The property ( Items ) specifies whether the items are arranged or not in the ListBox. ( X )
- (2) Flowchart is a convenient tool for a better documenting of the complicated programs. ( ✓ )
- (3) Each button in the keyBoard presents an ( Object ) that has certain properties. ( ✓ )
- (4) The ( Output ) term is used to input the variable's value on Flowchart. ( X )
- (5) The ( Label ) control is used to provide the user with information to let him know the form's content. ( ✓ )

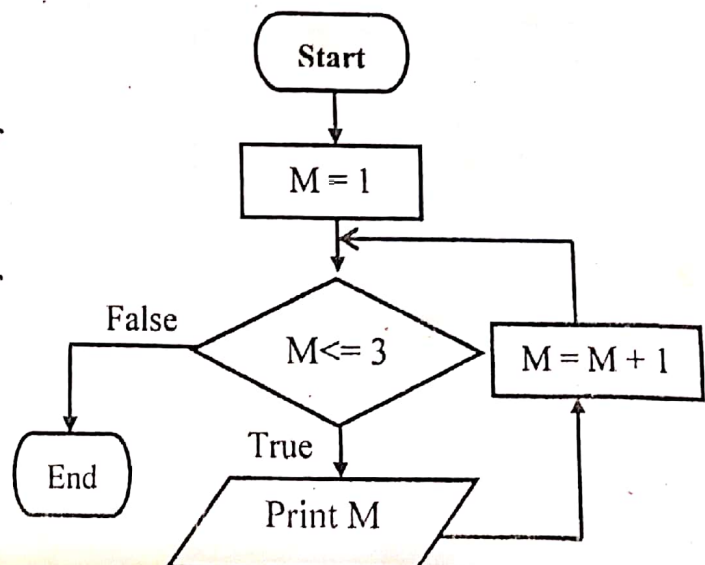
Q3: Correct the underlined words :-

- (1) The property ( BackColor ) is used to specify the text's ( Font , Size and Style ) and its effect on any control. Font
- (2) Iterations and branching can be represented through ( Algorithm ). Flowchart
- (3) To open the code window of a ( Form ) press ( F5 ). F7
- (4) ( GUI ) refers to Integrated Development Environment. IDE

Q4 : In front of you a flowchart to print the numbers from 1 to 3 considering the number is ( M ).

Answer the following :

- 1- How many times was the executing of content of the loop ? (3)
- 2- What is the value of ( M ) at the end of the loop ? (4)



Answer the following questions

Q1: Put each of the following words in the suitable place :-

( ControlBox - Flowchart - Problem Solving - Checked - Object )

- (1) ..... is a diagram that uses standard graphical symbols. (5) (A)
- (2) ..... is a property that enables or disables the control box of the window.
- (3) ..... is the objective or the specific output that we want to attain, through a sequence of steps.
- (4) ..... exists only when an instance of the class is created.
- (5) ..... is one of the (CheckBox) properties.

Q2: Put a (✓) next to the correct sentence and a (x) next to the wrong one :

- (1) The ( ListBox ) control is used to provide the user with information. (X)
- (2) The Mobile applications are produced through (.NET Framework). (✓)
- (3) Problem definition is one of the problem solving stages. (✓)
- (4) (. Start Position ) property shows its effect on the design mode. windowState (X)
- (5) The Event Handler name consists of the control name and the event name. (✓)

Q3: Correct the underline words :

(1) To show the label control , the following statement was written

(Lbl\_Title.Visible = False) True

(2) Properties are actions to be performed on objects , causing certain behavior on them. (procedures) (~~Procedures~~)

(3) The (Blueprint) which the objects are created from; is named (Form).

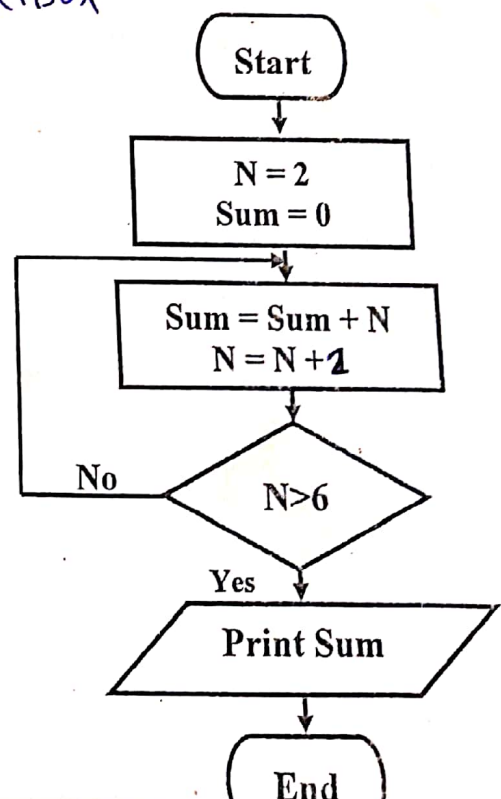
(4) (Label) is a box used for entering data from user. TextBox

Q4: In front of you , a Flowchart to print the sum of

**the integer even numbers from 1 to 6**

Calculate the value of Total ( Sum )

$$2 + 4 + 6 = 12$$



Answer the following questions

First question :

Put ( ✓ ) next to the correct sentence and ( × ) next to the wrong one:

- (1) Visual Basic .Net is one of the high – level languages. ( ✓ )
- (2) You can change the position of the button on the form through setting Name property. ( ✓ )
- (3) The following code ( Label1 .AutoSize = False ) is used to change the size of label control automatically according to the written text on it. ( × )
- (4) Algorithm is a set of procedures arranged logically for solving a specific problem. ( × )
- (5) GroupBox control is used to group other control tools of the same function on the Form window. ( ✓ )

Second Question: Fill in the spaces using the following words :-

( Problem – Flowchart – Event Handler – ComboBox – WindowState – .NET Framework )

- 1- A procedure which contains a code that is carried out when a corresponding event occurs is Event Handler
- 2- A situation that requires a solution is called .Problem .
- 3- The property which its effect appears in runtime mode only is WindowState
- 4- Libraries and compilers are the most important components of .NETFramework
- 5- The control Tool that displays a drop – down list from which one item can be selected is .ComboBox

Third question: Correct the underlined words in the following sentences:

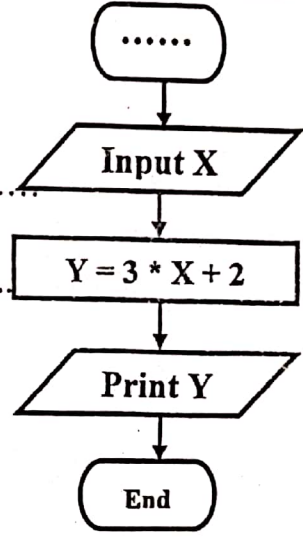
- 1- Program testing is writing all the steps taken for solving a problem (Program Documentation)
- 2- F1 Key is used to open Code Window. (F7)
- 3- Font is a property that allows multiple lines within the TextBox control tool. (Multi Line)
- 4- Property Window is the interface of the program which the user deals with. (Form)
- 5- ForeColor is a property used to change the background color of the form. (BackColor)

Fourth question:

First : look at the following flowchart, and choose the suitable answer for

the next sentences:

- 1- The suitable expression to fill the dots in flowchart is .....  
( Start - End - Flowlines )
- 2- A word in the flowchart that gives the same meaning of output .....  
( Input - Print - none of the previous )
- 3- Rectangle symbol  $Y = 3 * X + 2$  in the flowchart represents .....  
( Output - Input - processing )



Second : -

State two advantages of flowcharts.

- ① Facilitating and understanding of the problem
- ② useful To explain the program To others
- ③ helping in documenting the برنامج الأسئلة program.

Answer the following questions

First question :

Put (✓) next to the correct sentence and (×) next to the wrong one:

- (1) PasswordChar property is common among different controls. ( × )
- (2) Program design means making sure that the program is free of errors. ( × )
- (3) ComboBox is one of the control tools in VB.Net language. ( ✓ )
- (4) Flowchart is useful to explain the program to others. ( ✓ )
- (5) VisualBasic.Net language is considered event Driven. ( ✓ )

Second Question: Fill in the spaces using the following words :-

( Compilers - Method Name - Loop - Class Name - Checked - ListBox )

- 1- ..... is a menu in the code window which displays the names of controls on the form.
- 2- ..... is used in the Flowcharts to print the numbers from 1 to 3 .
- 3- ..... is a property of the RadioButton tool.
- 4- ..... which compile commands and instructions written in programming language into machine code which the Computer deals with.
- 5- ..... is a tool used in showing a list of items .

Third question: Write the scientific term for each of the following sentences:

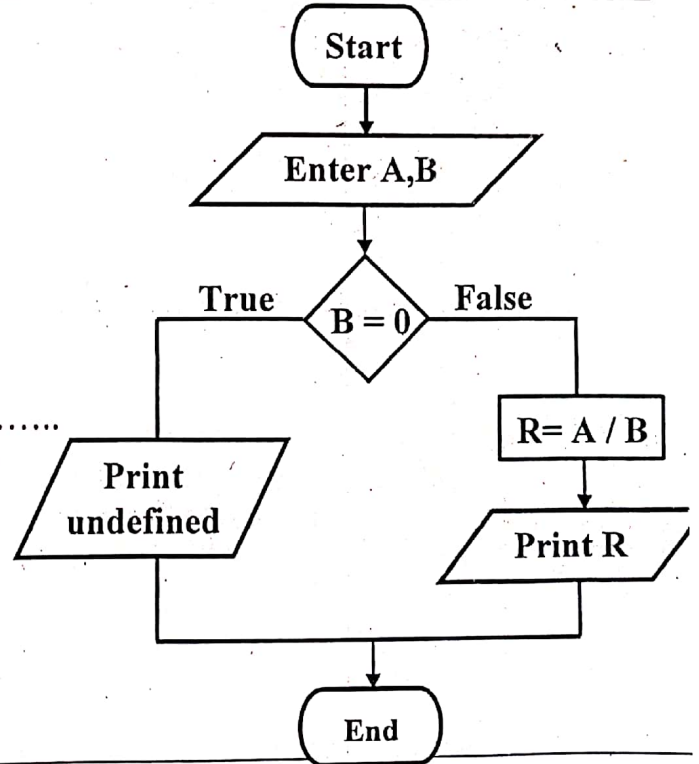
- 1- It is the interface of the program which the user deals with. (Form)
- 2- A control is used to group other control tools of the same function on the form window. (GroupBox)
- 3- It is the first stage of the problem solving. (Problem definition)
- 4- A property used in defining shape , size and style of the TextFont appeared on the button. (Font)
- 5- A window which displays a list of folders and files of the project. (Solution Explorer)

Fourth question:

First : look at the following flowchart, and choose the suitable answer for

the next sentences:

- 1- Interger the value of A , B variables is expressed by the word .....  
( Print - Enter - End )
- 2- The following symbol  $R = A / B$  represents .....  
( Processing - Input - output )
- 3- Suppose that the value of A = 6 and the value of B = 0 then the final result is .....  
( 6 - Zero - undefined )



Second : -

State two ways to open the code window.

- ① (F7)
- ② (from solution Explorer)

﴿ انتهت الأسئلة ﴾

**Answer the following questions**

**Question (1): Choose the correct answer:**

- 1- The TextBox object is marked by the property  
( PasswordChar - MaximizeBox - Font )
- 2- To open the Code Window from the context menu select  
( Copy - View Code - Delete )
- 3- The RightToLeft Layout property work when the value RightToLeft equal  
( False - No - Yes )
- 4- The end of class line is  
( Form1 - EndSub - End Class )
- 5- The Properties window contain .....  
( property name - property value - all the previous )

**Question (2): Match (A) with (B)**

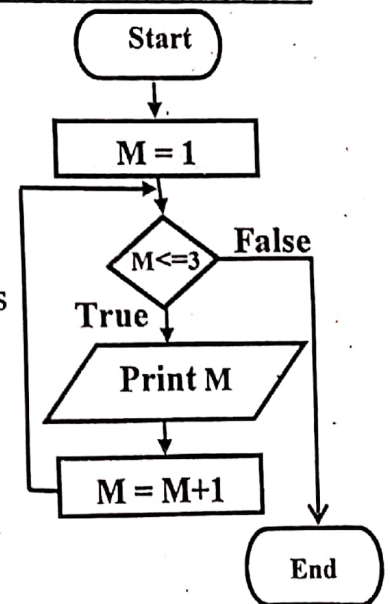
(A)	(B)
1- Flowcharts use	define the State of Form window. (2)
2- WindowState Property	that an objective or output is required to reach. (4)
3- Events mean	the names of controls on the Form. (5)
4- Problem means	some agreed on standard symbols. (1)
5- The Class Name menu displays	that can occur to the object. (3)

**Question (3): Put (✓) next to the correct sentence and (x) next to the wrong one:**

- (1) Algorithm is the first stage of solving problems. ( X )
- (2) ListBox items can't be arranged alphabetically. ( X )
- (3) Framework.Net contains compilers , libraries and runtime environment. ( ✓ )
- (4) The variable refers to a memory storage that holds a value. ( ✓ )
- (5) Visual Basic.Net is considered object oriented language. ( ✓ )
- (6) The property BackColor is used in showing a certain text in the title bar of user window. ( X )

**Question (4): Look at the following flowchart, then choose the correct answer:**

- 1- The repeated step (command) is  
( Start - Print M - End )
- 2-  $M = M + 1$  means that variable increment is by  
( 1 - 3 - 4 )
- 3- The symbol that is used to represent a decision process is  
( - - )
- 4- The value of M after the end of the loop is  
( 6 - 4 - 2 )



Answer the following questions

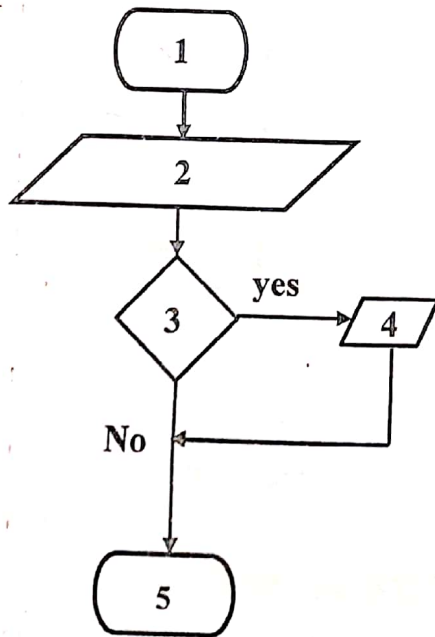
Q 1: Choose the correct answer:-

- (1) ..... displays a list of folders and files of the project.  
( Solution Explorer - ToolBox - Form )
- (2) ..... is a property that allows multiple lines within the TextBox control tool.  
( MaxLength - PasswordChar - MultiLine )
- (3) ..... means making sure that the program is free of errors.  
( Program design - Problem definition - Program testing )
- (4) ..... is one of the control tools that can be placed on the form window.  
( WindowState - Label - True )
- (5) ..... is a Key to open the code window.  
( F4 - F7 - F1 )

Q 2: put ( ✓ ) next to the correct sentence and ( × ) next to the wrong one :-

- 1- The Location property is used to choose the ForeColor to the appeared text on the Button. ( × )
- 2- GroupBox is a tool used to insert data from the user during run time. ( × )
- 3-Event Handler is a procedure which contains a code that is carried out when a corresponding event occurs. ( ✓ )
- 4- Flowcharts help in documenting the program in a better manner. ( ✓ )
- 5- The VB.Net language is used in producing windows and web applications. ( ✓ )

Q 3: Write the number next to each command in the table which determines its correct location in the flow chart to print (pass) word in case of the input mark is greater than or equals 50:-



Print ( pass )	( ٤ )
End	( ٥ )
Enter X	( ٢ )
X >= 50	( ٣ )
Start	( ١ )

**Answer the following questions**

**Question (1):** Put a (✓) next to the correct sentence and a (×) next to the wrong one:

- (1) VB.NET is one of the high level programming languages . ( ✓ )
- (2) Flowcharts are useful to explain the program to others . ( ✓ )
- (3) ( AutoSize ) is used to choose the Border Style of the Label . ( ✓ )
- (4) Every object in VB.NET language has properties , events and procedures . ( × )
- (5) ( AutoCompleteSource ) is one of the ComboBox properties . ( ✓ )
- (6) Method name displays the names of the controls on the Form . ( × )

**Question (2):** Choose the correct answer between brackets :

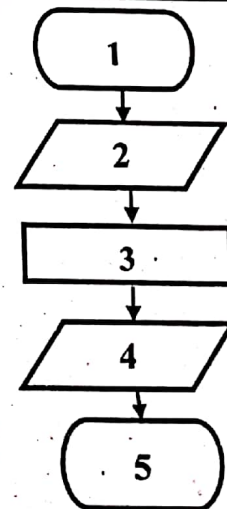
- 1- To open the Code Window from the keyboard press the key .....  
( F5 - (F7) - F2 - F1 )
- 2- A control tool used to choose the Gender of student " male " or " female " is .....  
( TextBox - GroupBox - Label - (RadioButton) )
- 3- Writing all the steps that taken to solve the problem is named .....  
( Program Testing - Flowcharts - (Program documentation) - Problem definition )
- 4- A list of folders and files of the project are shown in .....  
( Form - ToolBox - (Solution Explorer) - Properties window )
- 5- The Property which its effect appears in runtime mode only is .....  
( RightToLeft - (WindowState) - ControlBox - MinimizeBox )

**Question (3):** The following is a Flowchart used to calculate

the sum of two numbers entered and display the result .

You are asked to write the number next to its correct command .

C = A + B	( 3 )
Start	( 1 )
Output C	( 4 )
End	( 5 )
Enter A and B	( 2 )



**Question (4):**

Private Sub Button1.Click ( sender As Object , e As EventArgs ) Handles Button1.Click  
Label1.Text = " جمهورية مصر العربية "

End Sub

**Complete the following using the previous code :**

- 1- Label1 is the control tool that the result appears on .
- 2- Text... is the property name .
- 3- ..... is the value of the property . جمهورية مصر العربية
- 4- ..... is the end of procedure line . End sub

**Answer the following questions.**

**Q1: Put a (✓) next to the true sentence and a (x) next to the false one:**

- 1- VB.NET is one of the objects oriented programming languages : ( ✓ )
- 2- PasswordChar is a common property among different control tools . ( X )
- 3- IDE provides tools and merits for the programmer that help him create applications : ( ✓ )
- 4- ForeColor is a property that defines ( shape, size and style ) of the text font appeared on the button , ( X )
- 5- Problem Definition is the first stage of the problem solving . ( ✓ )
- 6- Label is a tool used in showing a text on the Form Window . ( ✓ )

**Q2: Put each word of the following words in the suitable place:**

{ Form - Event Handler - Checked - MinimizeBox - ListBox - Flowchart }

- 1- ..... is a property that controls the appearance or disappearance of MinimizeBox of the Form Window .
- 2- ..... is a procedure which contains a code that is carried out when a corresponding event occurs .
- 3- ..... is a tool that shows a list of items .
- 4- ..... is a diagram that uses standard graphical symbols .
- 5- ..... is the interface which the user deals with through different controls .
- 6- ..... is one of the characterized properties of the RadioButton tool

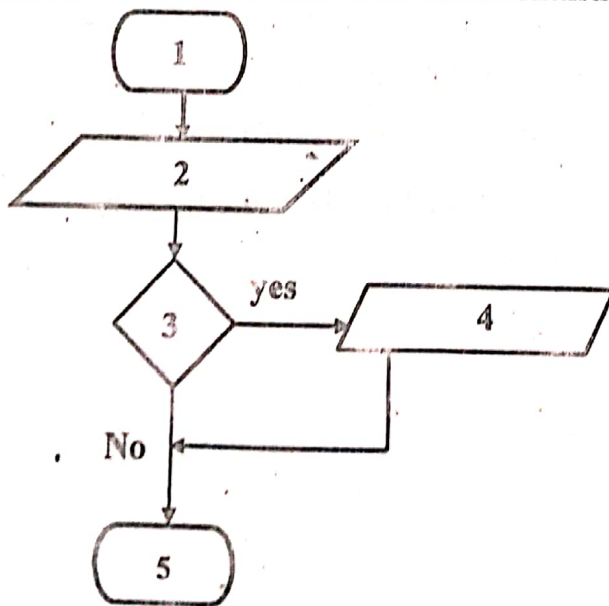
**Q3: Complete the spaces using the following code :**

```
Button1.Text = " Exit "
```

- 1- The property is ...Text.....
- 2- The control tool name is ...Button1.....
- 3- the value is ...Exit.....

**Q4: The following flowchart is to print the word " ناجح " in the case of the value of X greater than or equal 50**

**The required :** Write in front of each command its correct number from the flowchart .



( 3 )	X >= 50
( 5 )	End
( 4 )	Print " ناجح "
( 2 )	Enter X
( 1 )	Start

انتهت الأسئلة

مديرية التربية والتعليم	محافظة الإسكندرية	جمهورية مصر العربية
: امتحان ( نصف العام ) لشهادة إتمام التعليم الأساسي ( العام ) للعام الدراسي ( ١٤٤١ هـ - ٢٠٢٠ م )		
المادة : الكمبيوتر و تكنولوجيا المعلومات والاتصالات بالإنجليزية	الزمن : ساعة واحدة	

**Answer the following questions**

**Question (1) : Put each word of the following words in the suitable place :**

[ **ToolBox** - **Problem Solving** - **TextBox** - **Items** - **Variable** ]

- 1- **Text Box**. is a tool used to insert data during the program runtime .
- 2- ..... is the steps, activities and processes to be done to reach an output or objective .
- 3- **Items**... is one of the **ComboBox** properties .
- 4- **ToolBox**. contains tools of control which can be put on the **Form** .
- 5- **variable** is a memory storage that holds a value that can be changed .

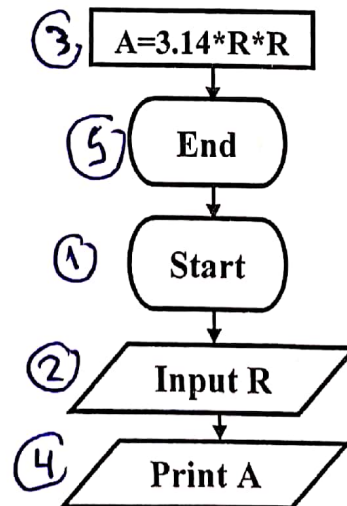
**Question (2):Put ( ✓ ) in front of the true sentence and ( × ) in front of the false one:**

- (1) Compilers that the Framework.NET provides create the objects . ( × )
- (2) **ListBox** tool is used to show a list of items . ( ✓ )
- (3) **RadioButton** is used to group other controls of the same function together on the **Form** . ( × )
- (4) The **Visual Basic.Net** is one of the objects oriented programming language . ( ✓ )
- (5) **Font** property defines ( shape , size and style ) of the text font appeared on the control . ( ✓ )
- (6) The result of execution the code ( **Label1.AutoSize = True** ) is changing the name of the **label1** control . ( × )

**Question (3) : Correct the underlined words :**

- 1- " Click " on the **Command Button** is considered as a property . *Event*
- 2- To open the Solution Explorer window, press **F7** . *code*
- 3- Program Testing is a stage through which we have to translate the flowchart into one of the programming languages . *Program design*
- 4- RightToLeft is a property used to change the background color of the **Form** . *BackColor*

**Question (4) : Redraw the following flowchart after arranging it to print the area of a circle with radius " R "**



﴿ انتهت الأسئلة ﴾