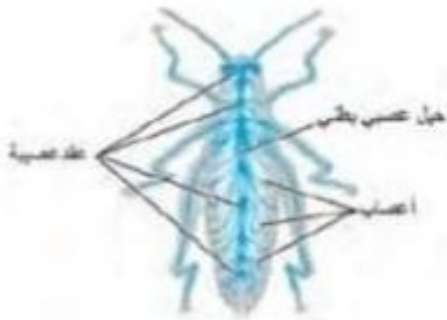
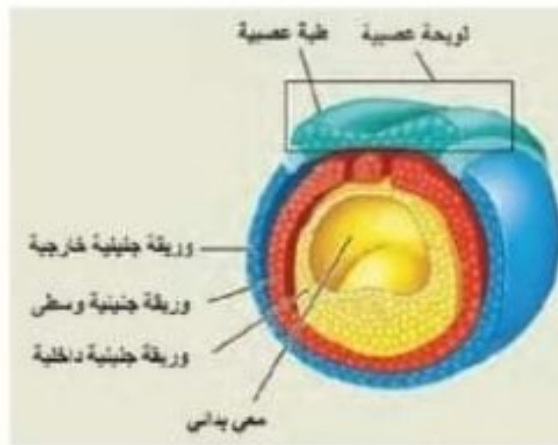


الرسومات في كتاب علم الأحياء المنهاج الحديث

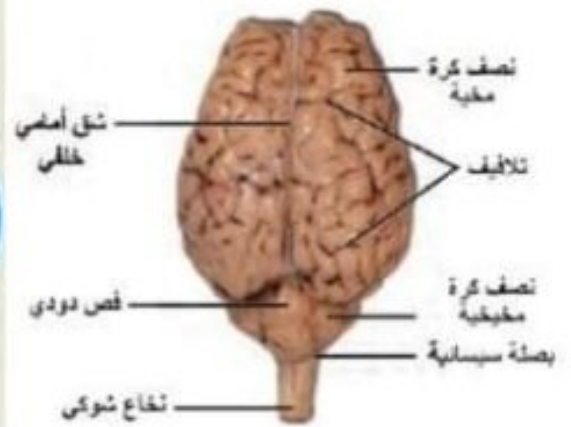
الحشرات



دودة الأرض



شكل النويحة العصبية لدى جنين الإنسان

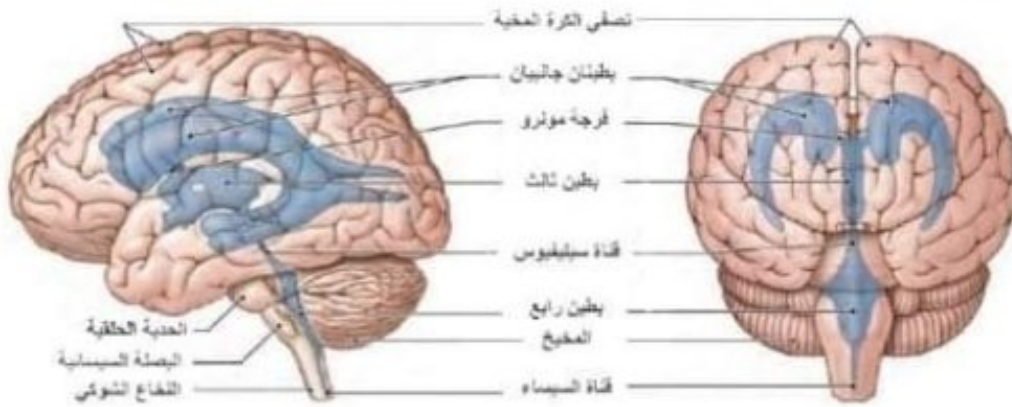
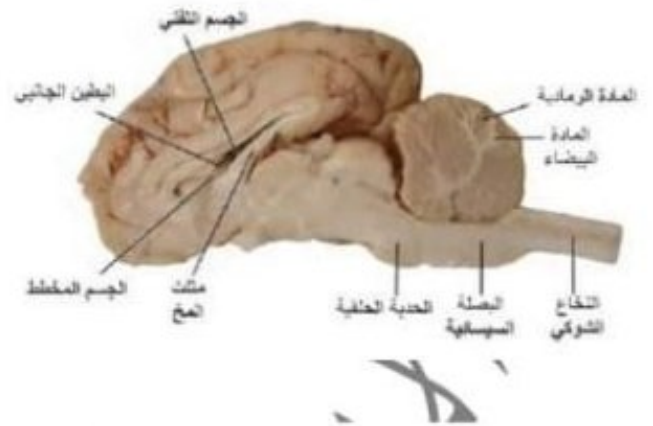
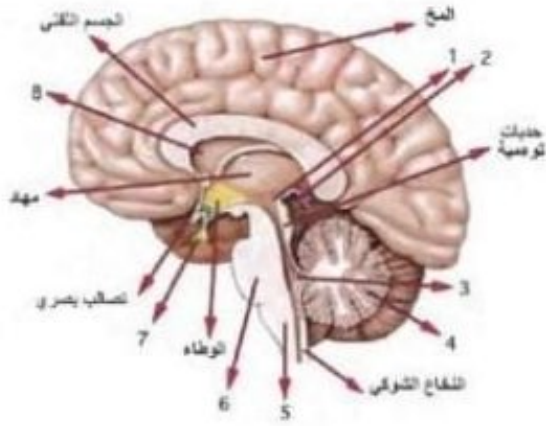


الوجه الظهرى للدماغ

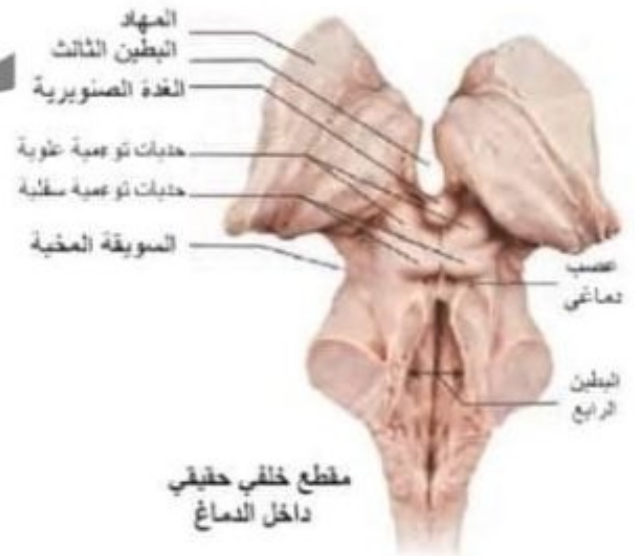


موبايل: 0944967818

الأستاذ: سامح سباهي



بطينات الدماغ



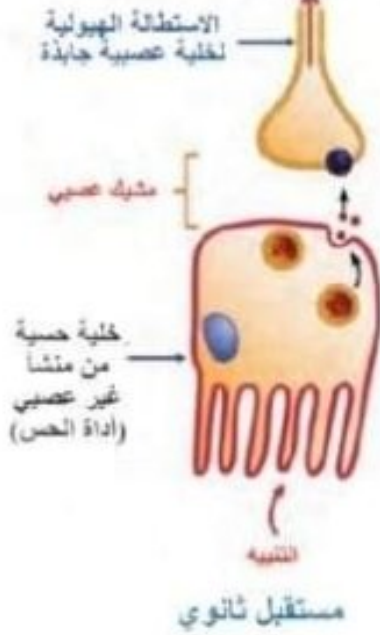




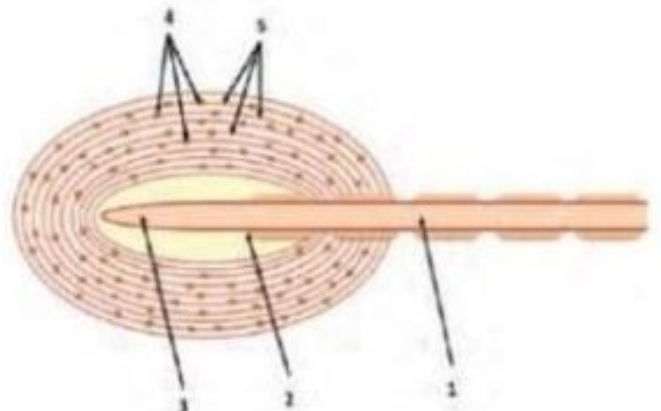
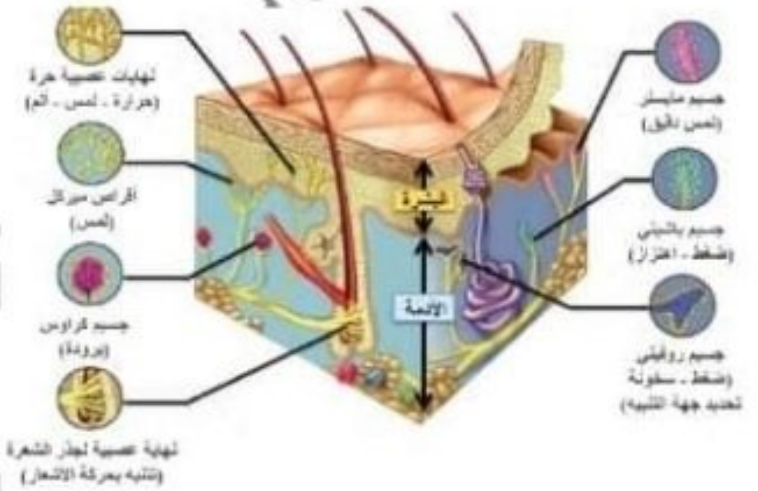


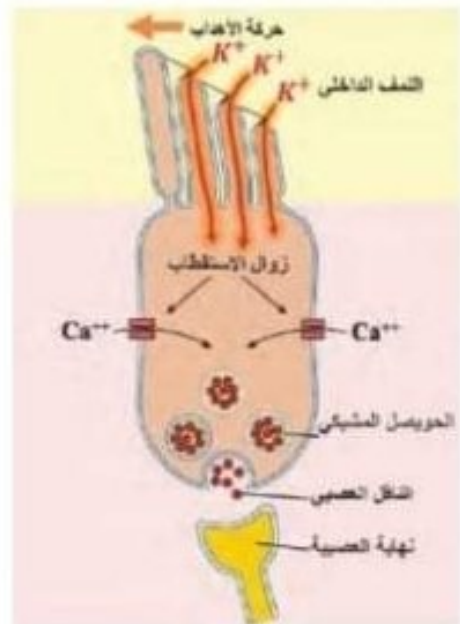
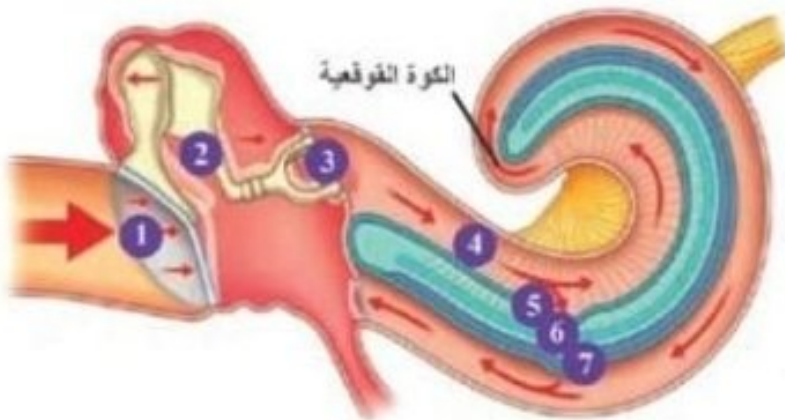
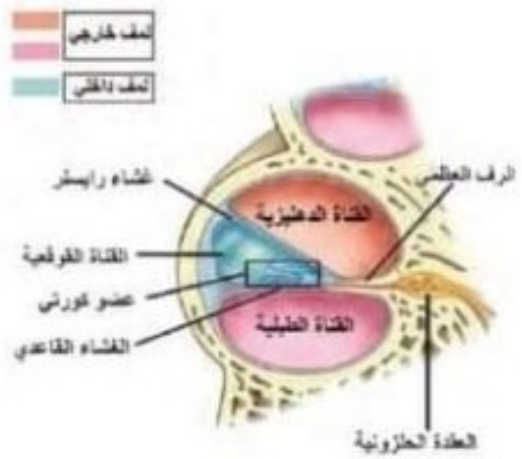
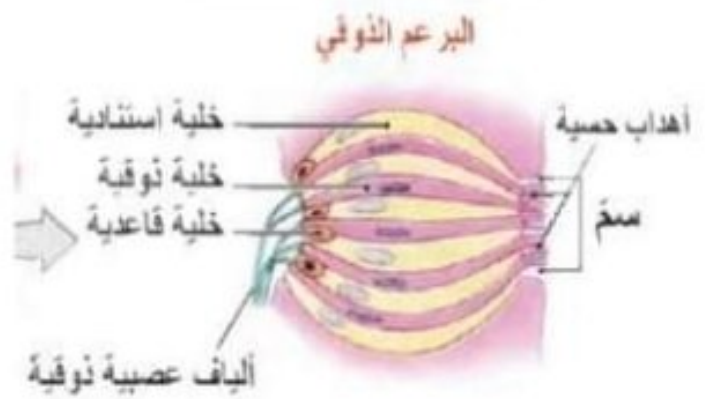


إلى الجهاز العصبي المركزي

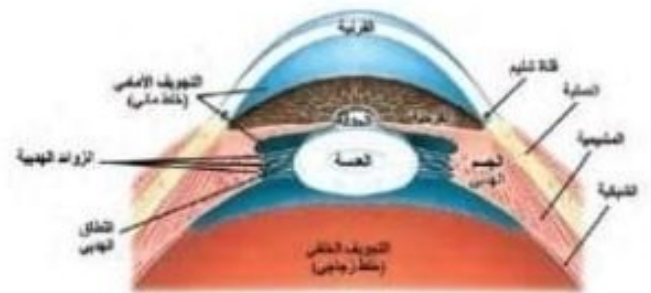
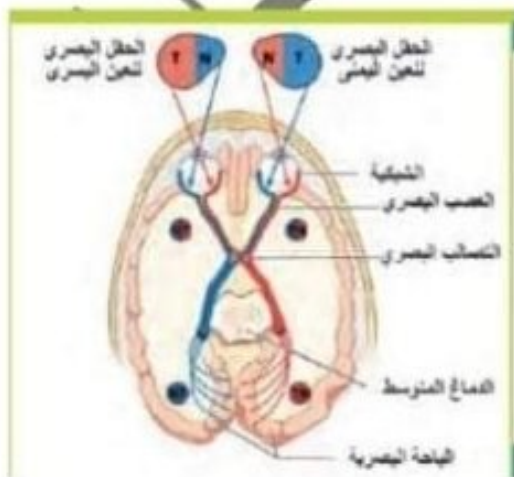
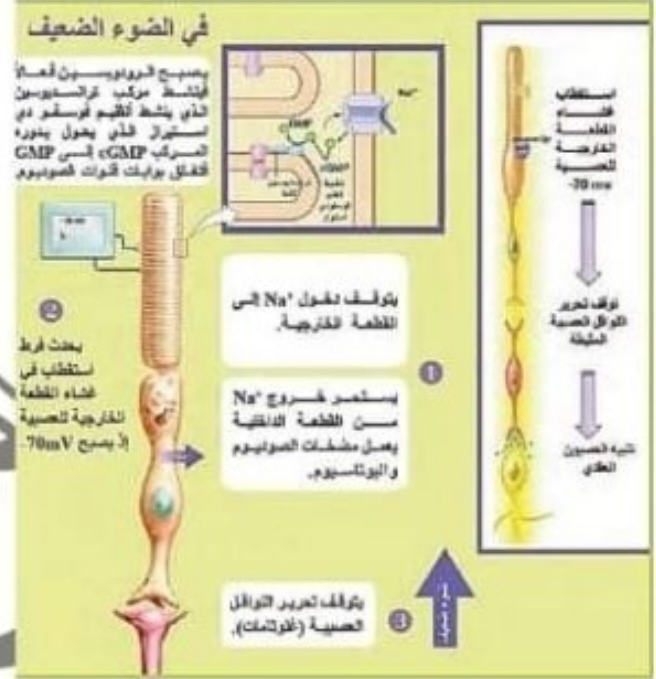
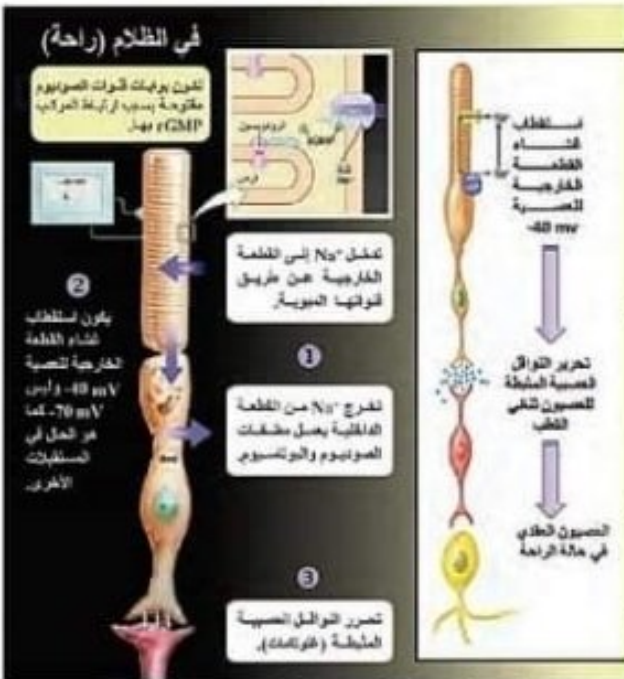


إلى الجهاز العصبي المركزي

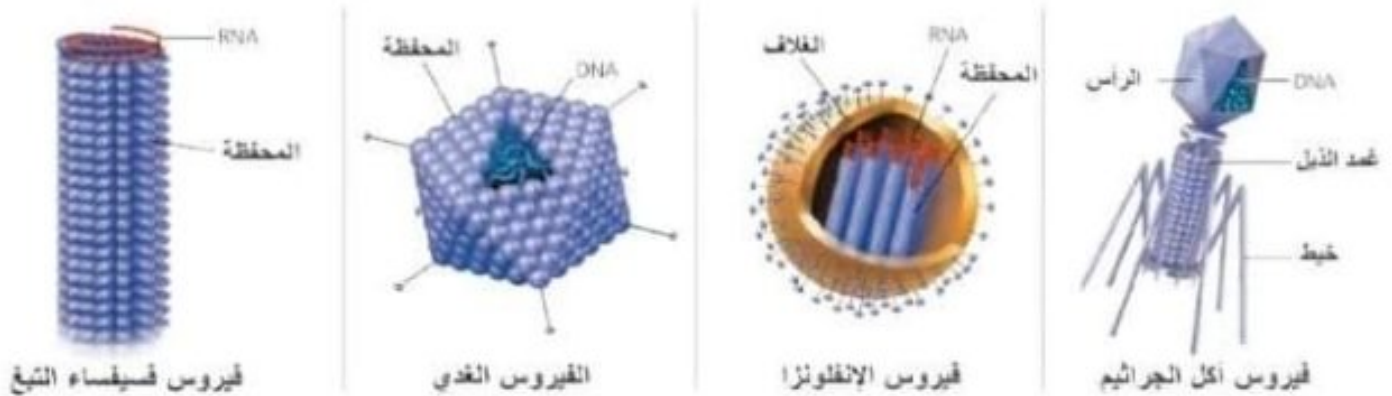
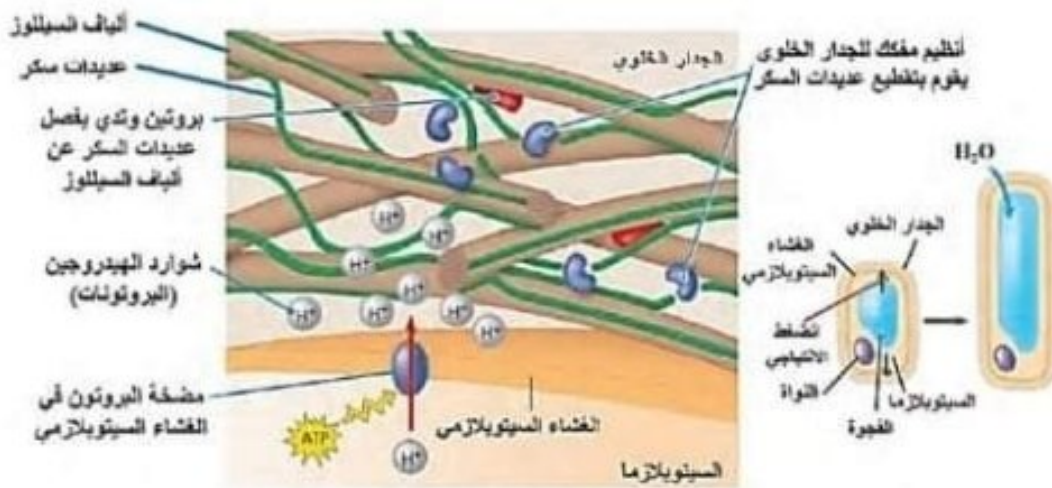




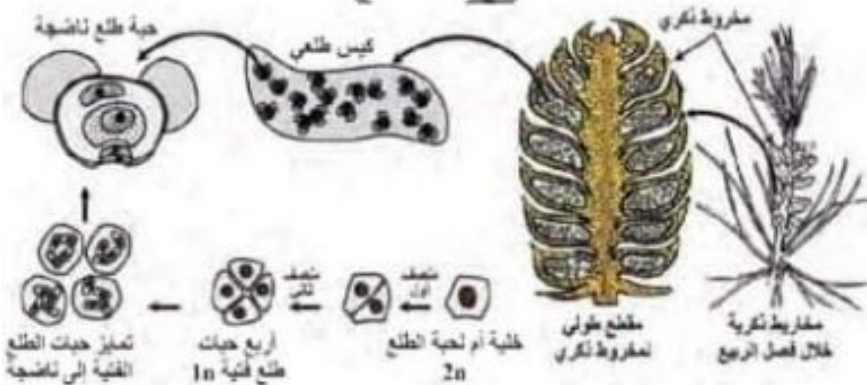
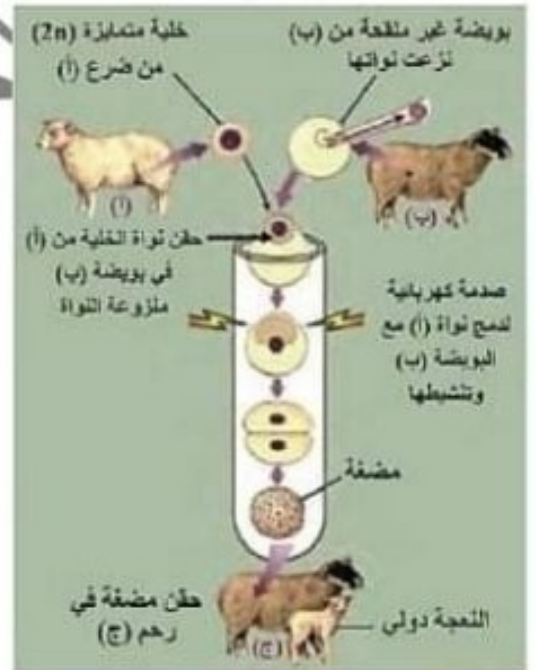
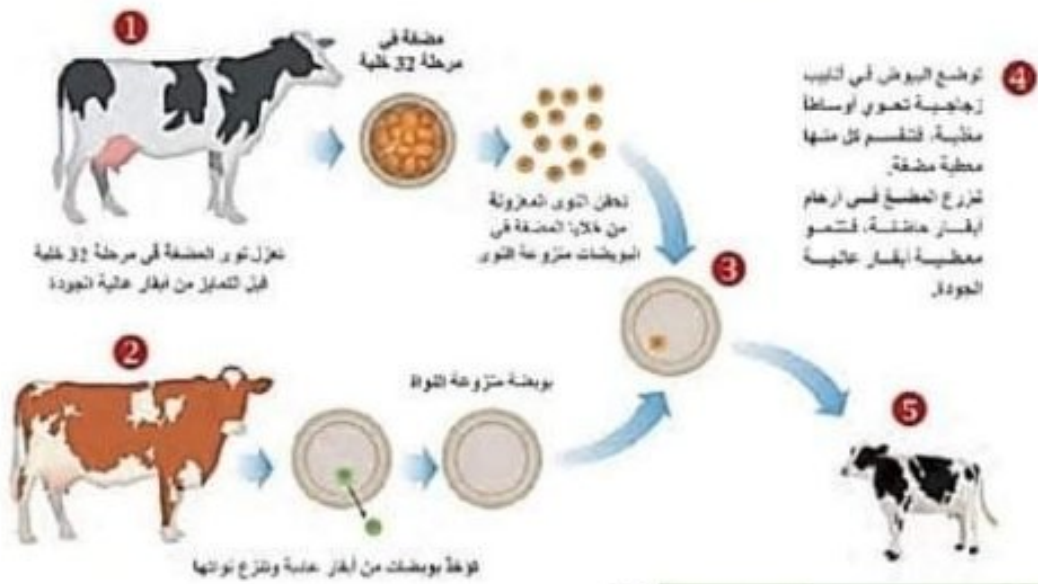










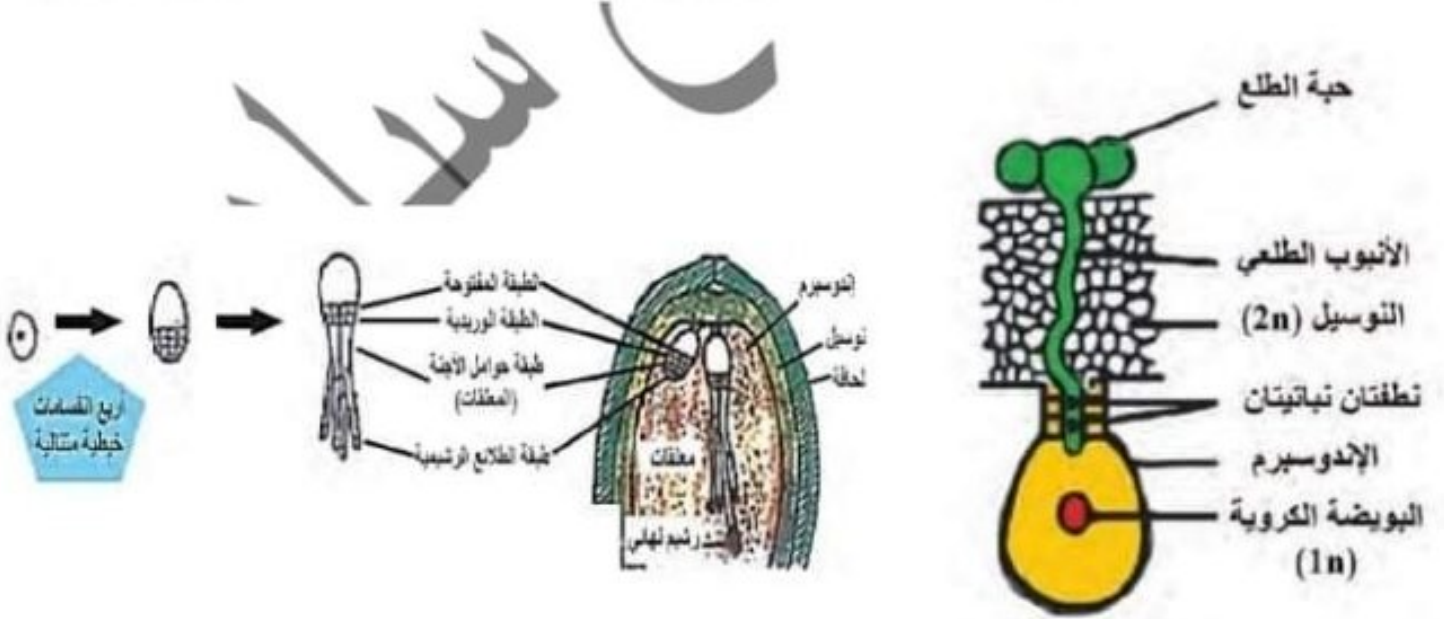
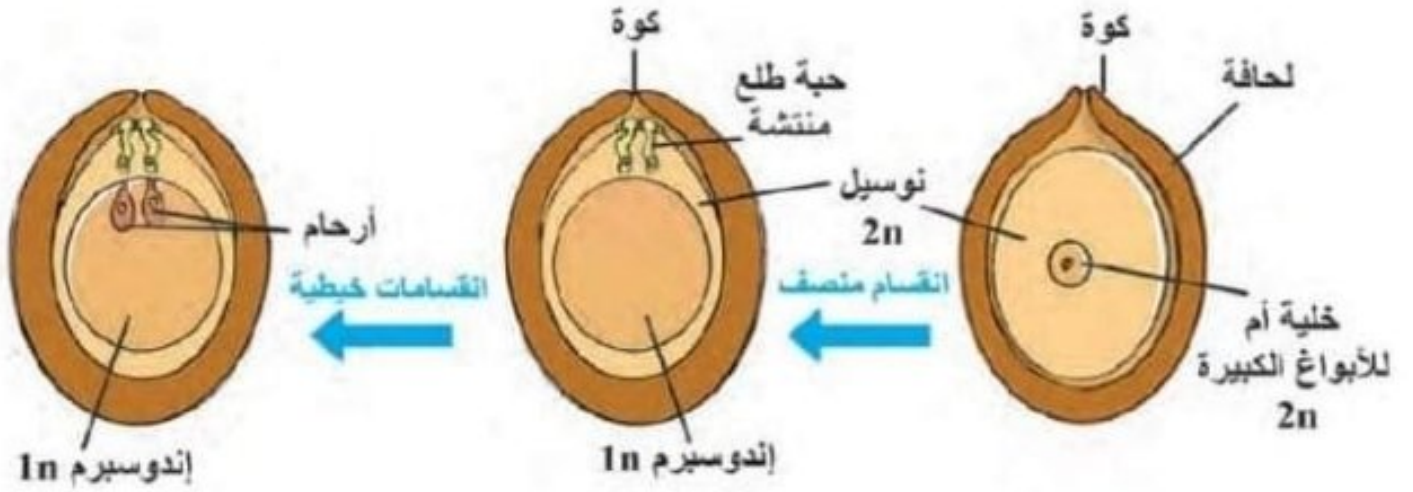


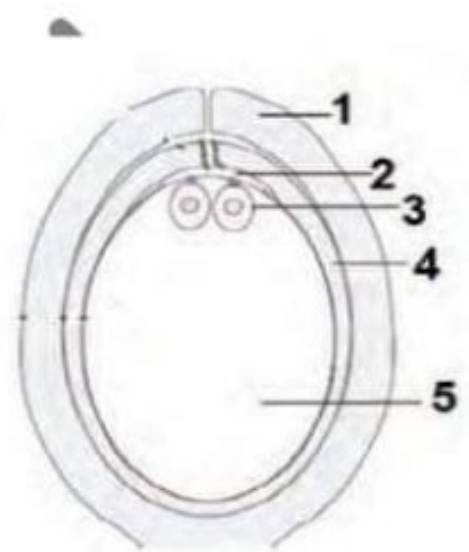


مقطع طولى في مخروط

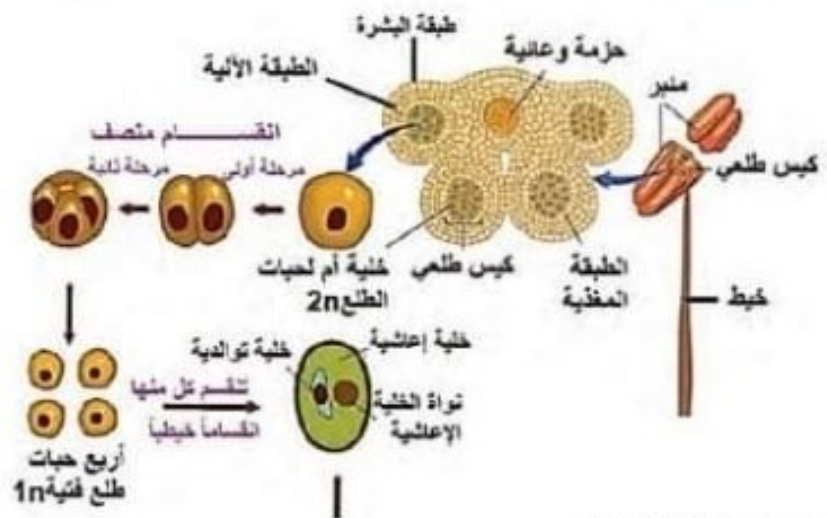


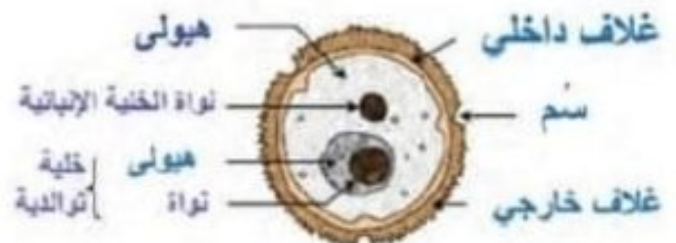
حبة طلع ناضجة عدد عاريات البذور





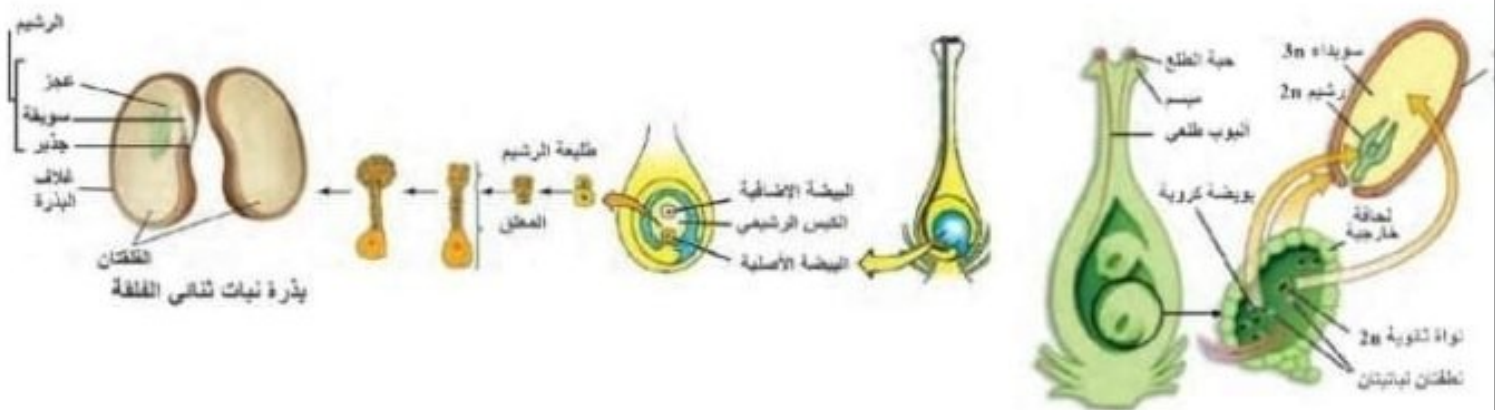
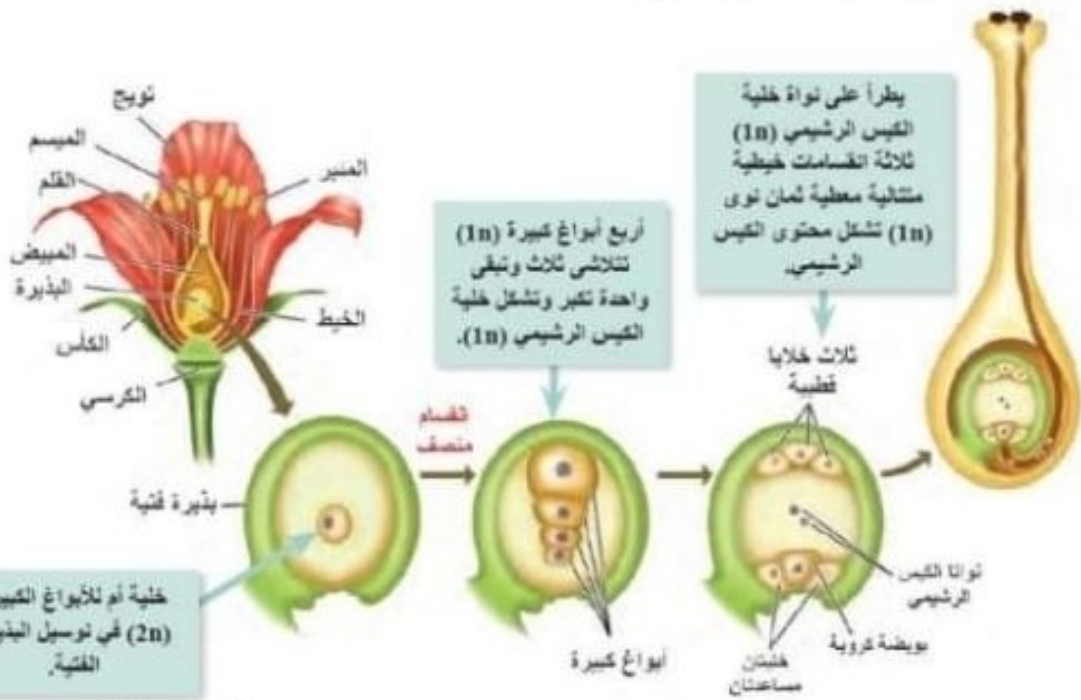
موبايل

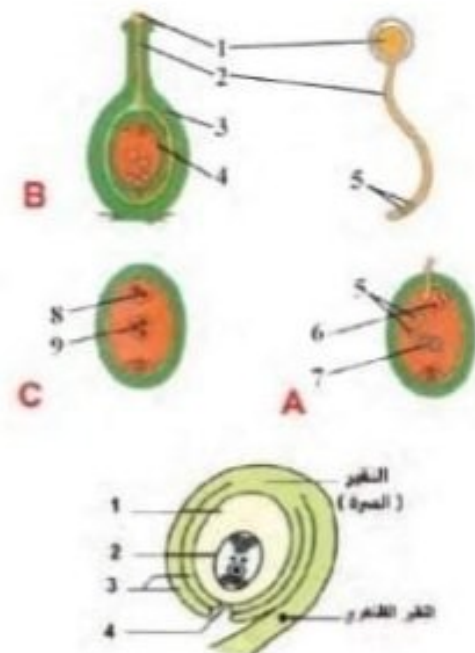
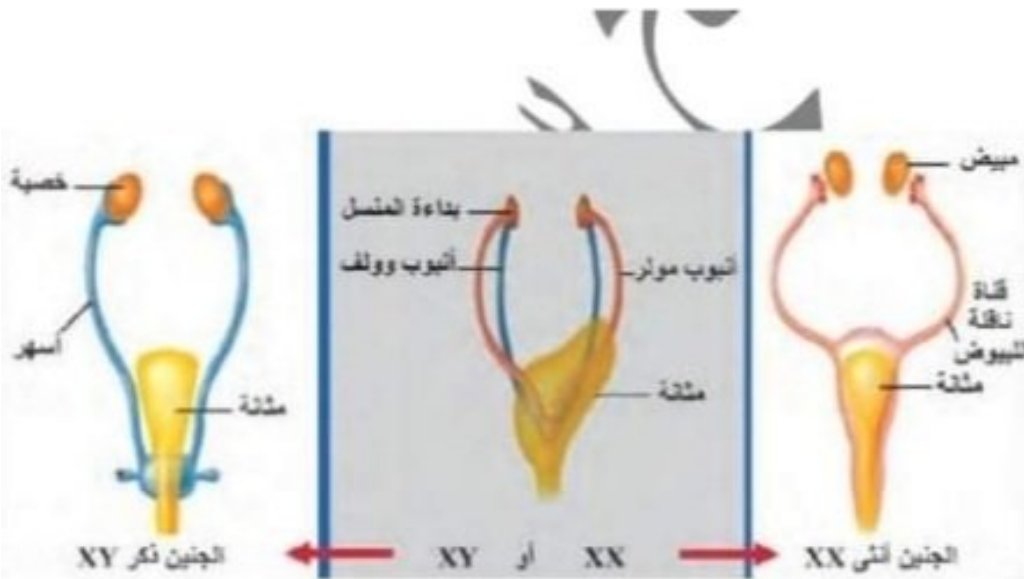
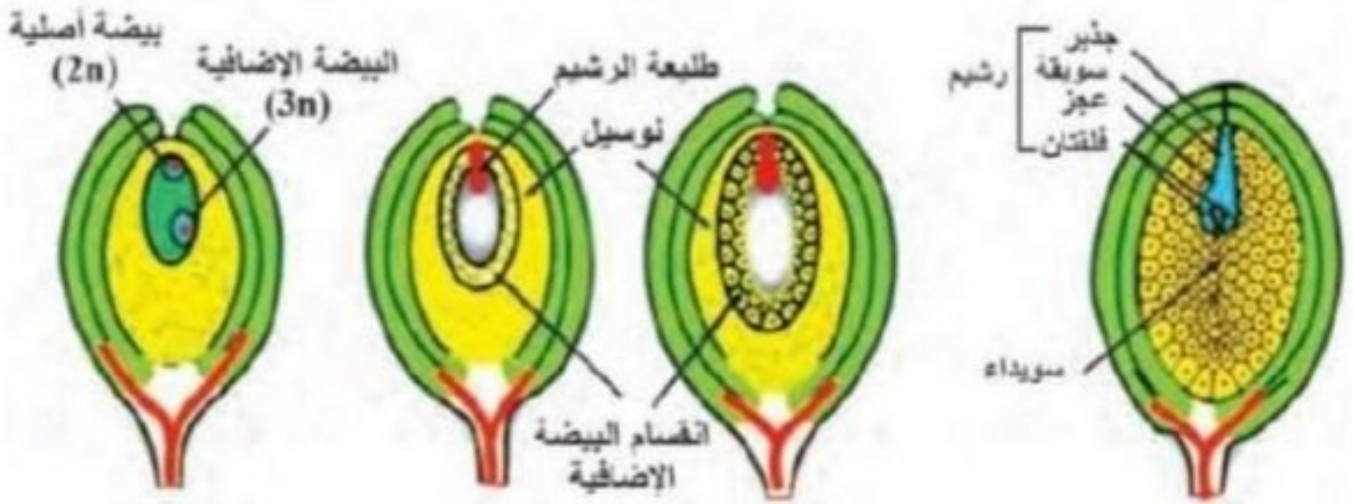


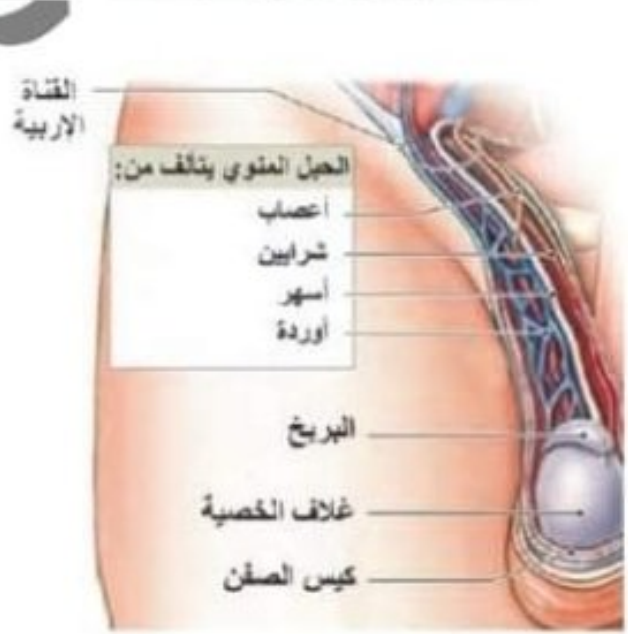
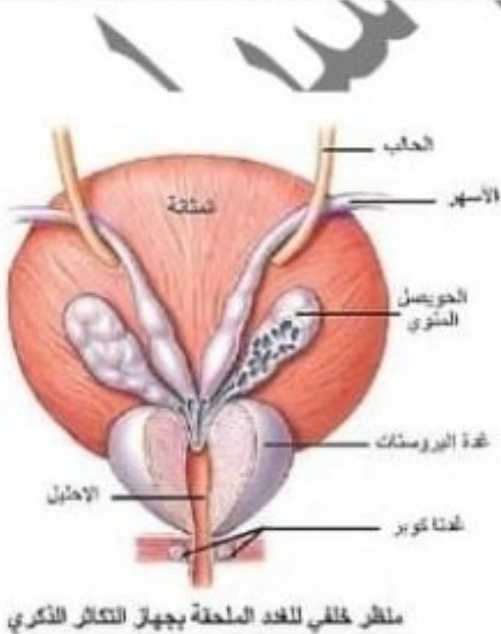
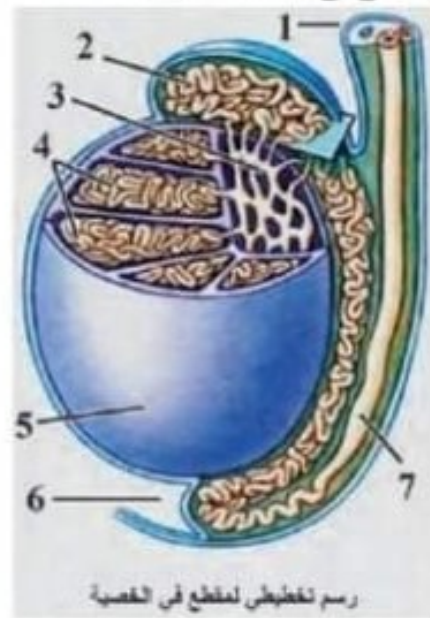
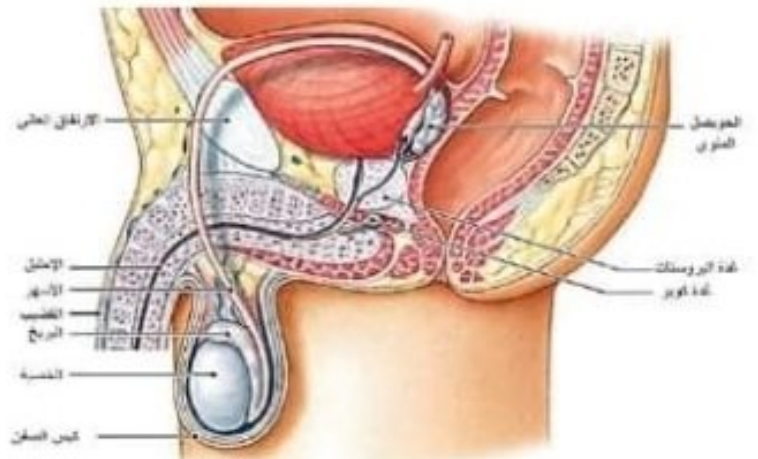
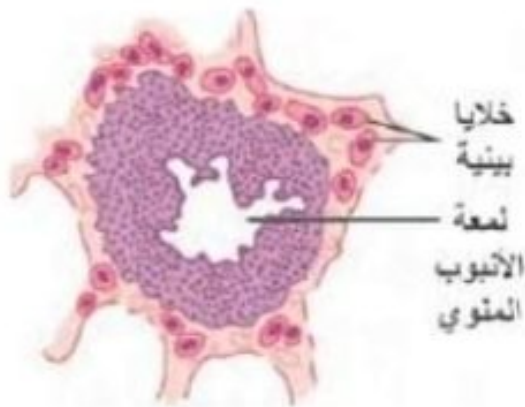


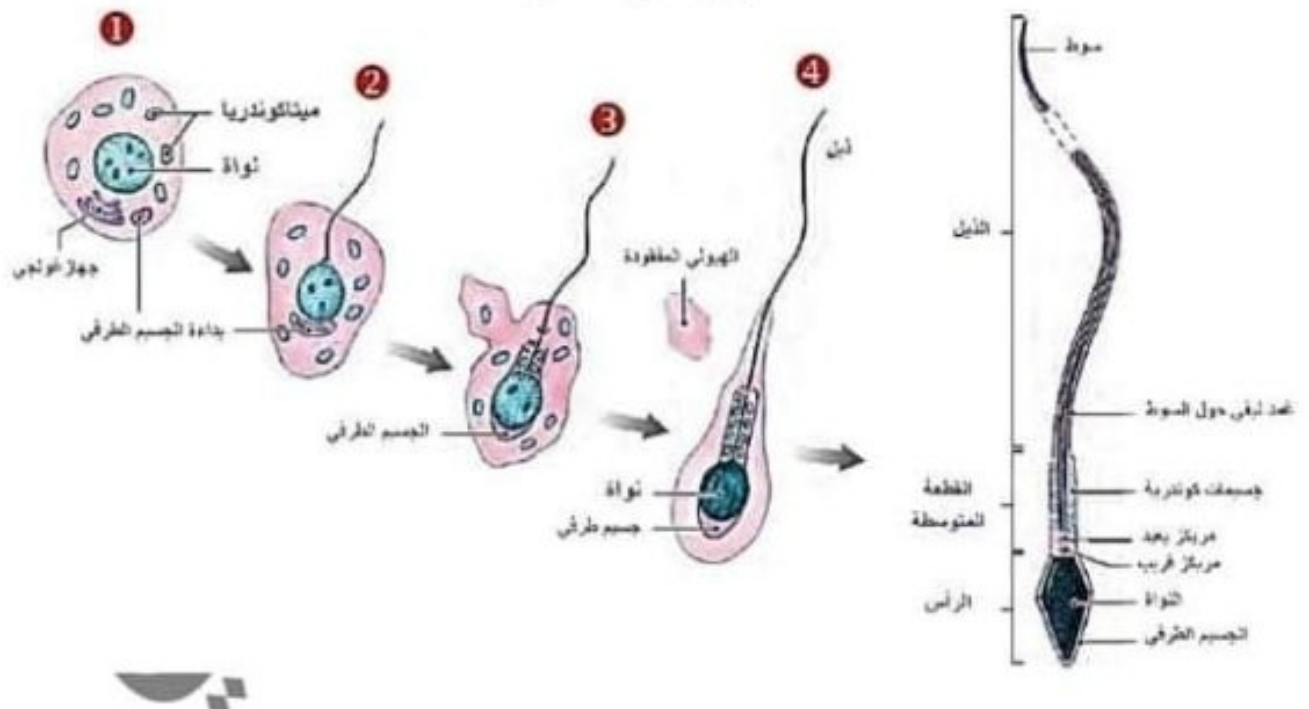
رسم تخطيطي لحبة طلع ناضجة

عند مغلفات البذور

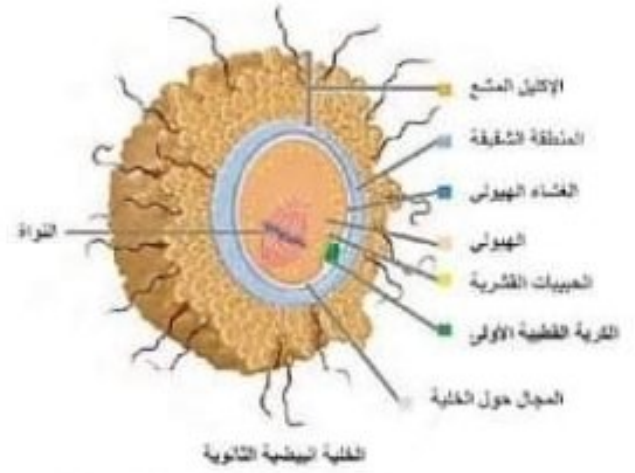
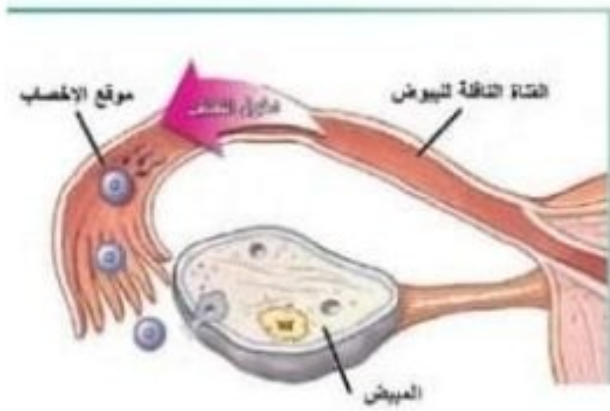




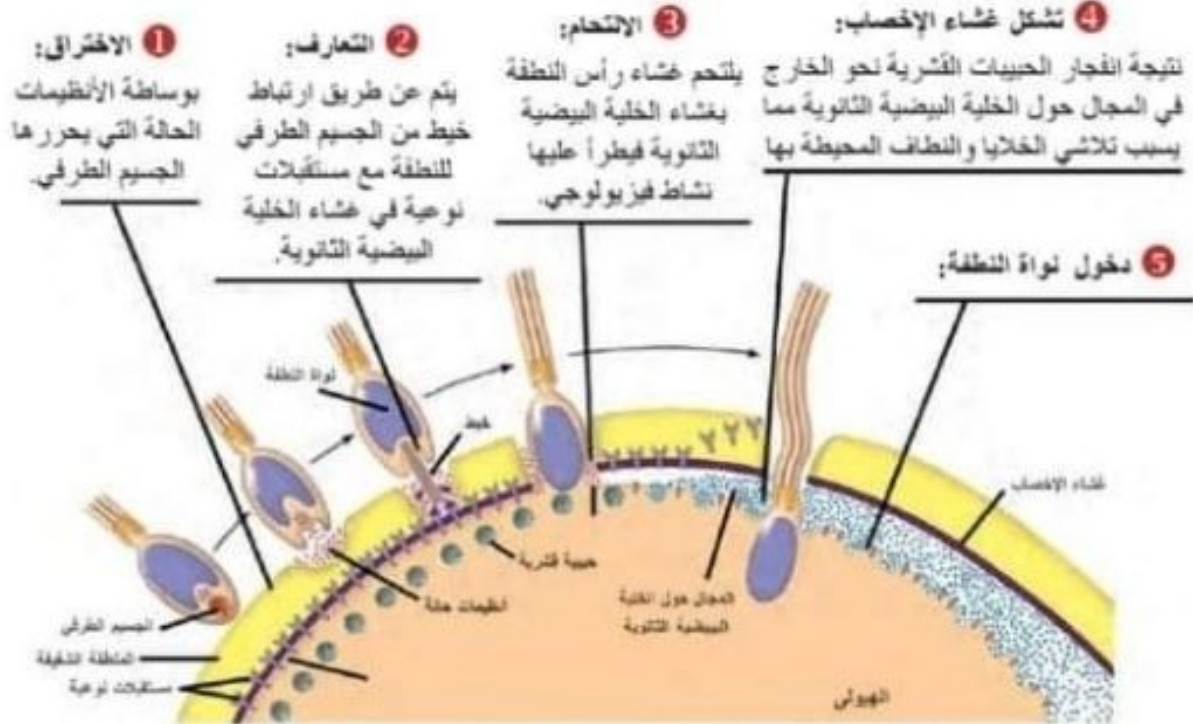








الخلية البيضية الثانوية



مراحل الإلقاح



