



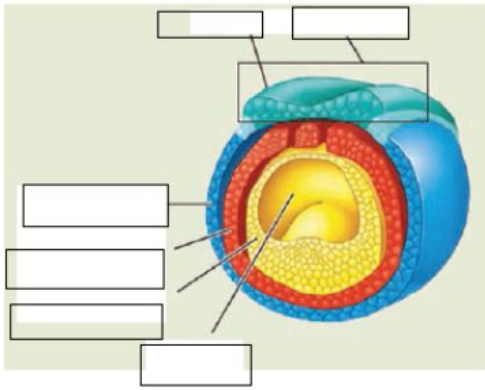
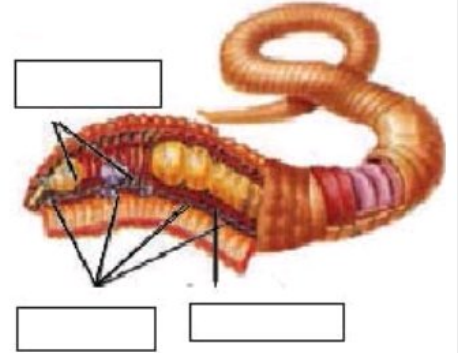
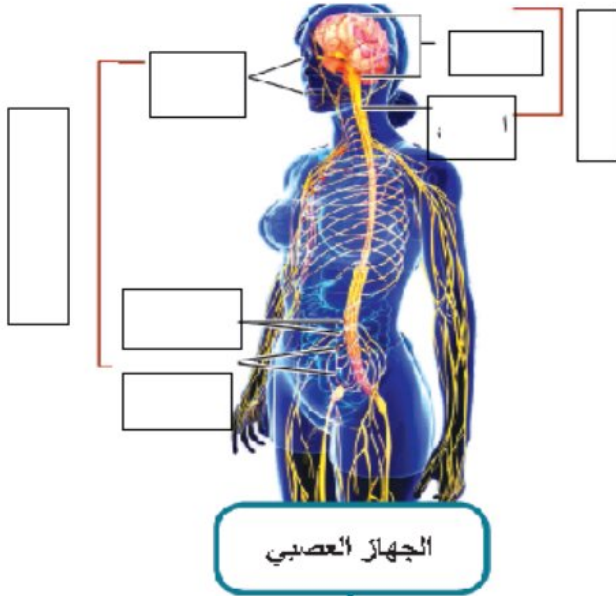
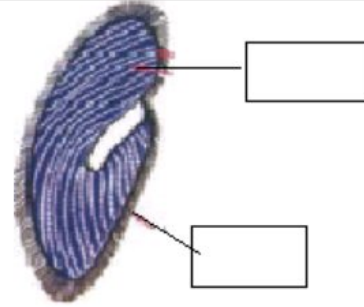
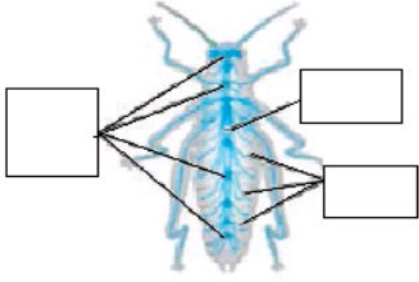
☆ [انقر على الرابط للوصول إلى المكتبة التعليمية على تليغرام – التجمع التعليمي || بوت](#)

[T.me/Science\\_2022bot](#) : تم التحميل بواسطة

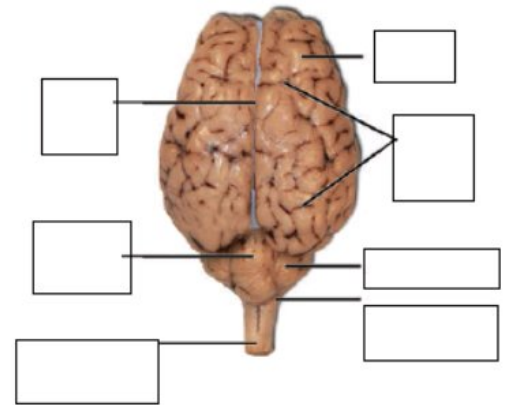
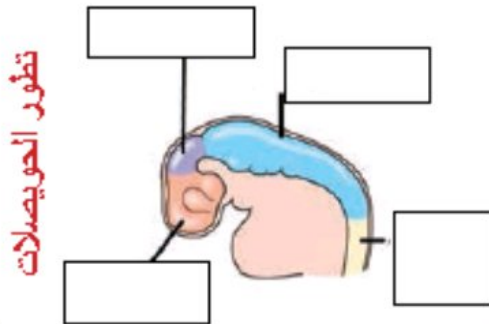
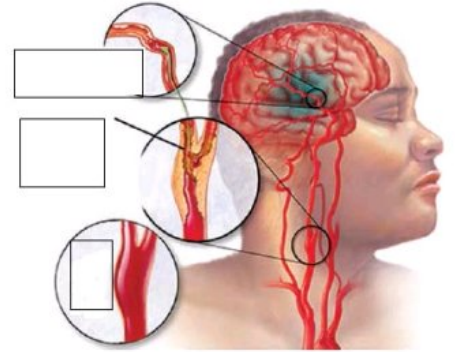


**Telegram** : [@Science\\_2022bot](#) ☆

## أهم أوراق العمل في الرسومات

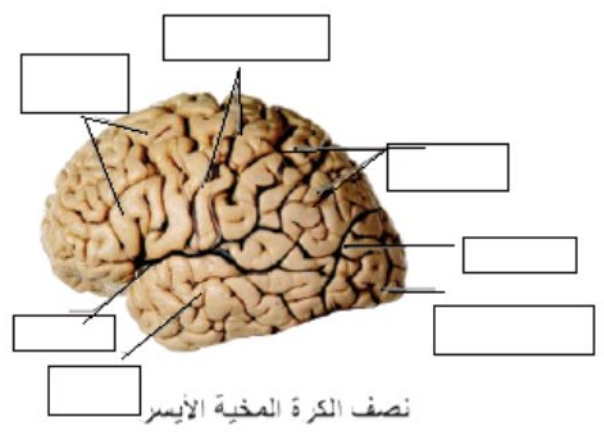
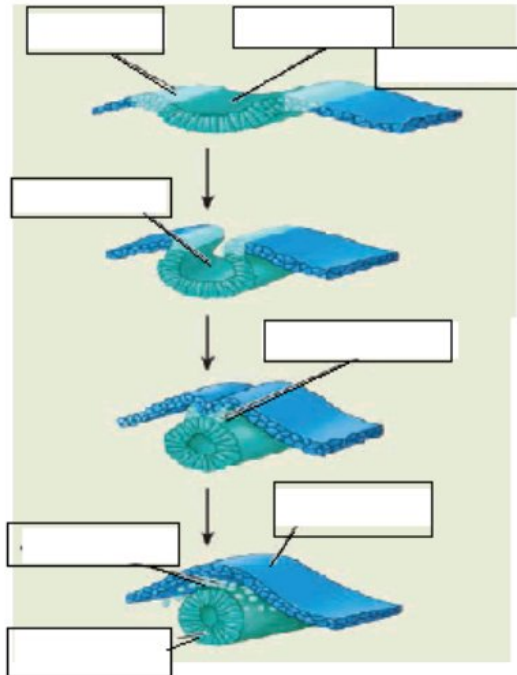


تشكل اللويحة العصبية لدى جنين الإنسان

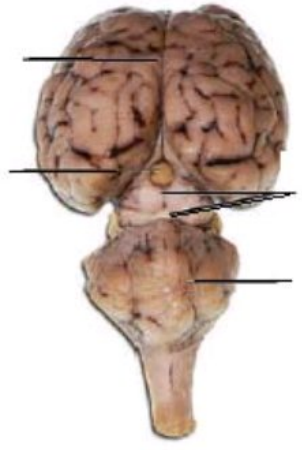
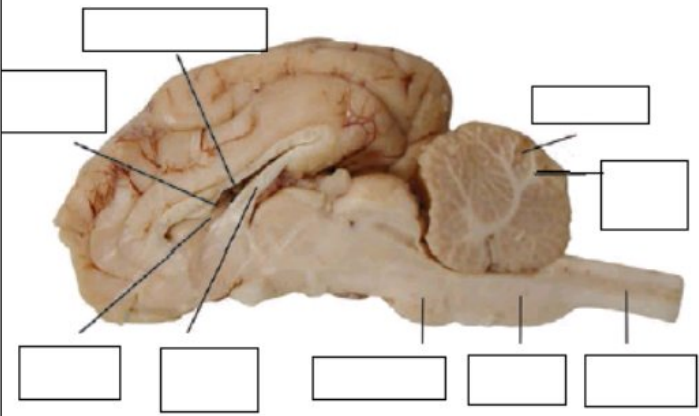
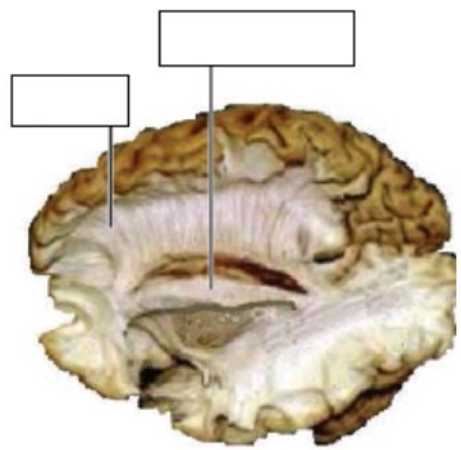
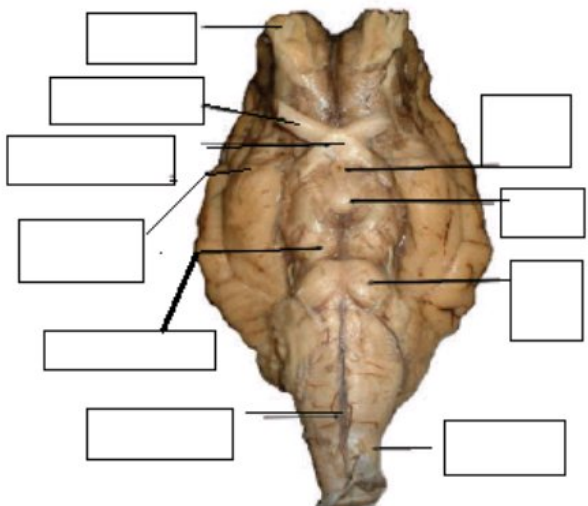


الوجه الظهري للدماغ

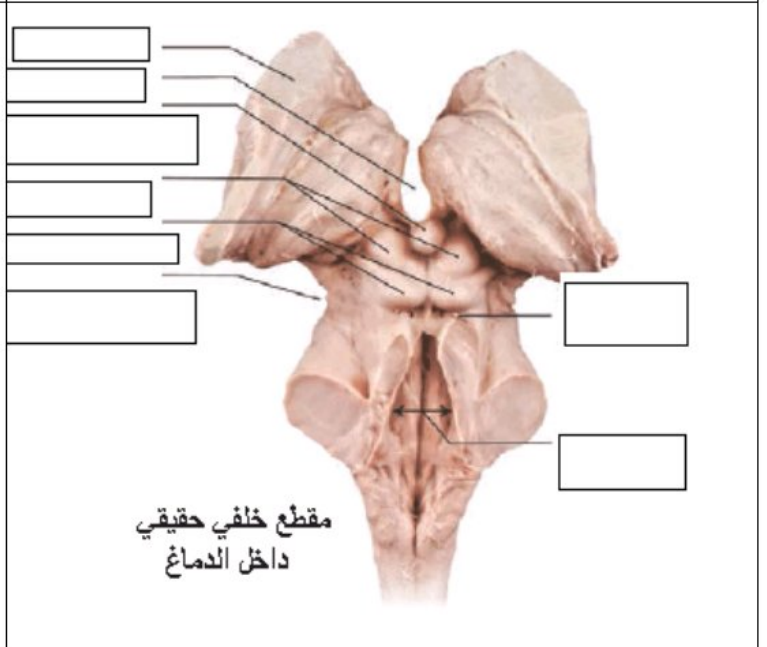
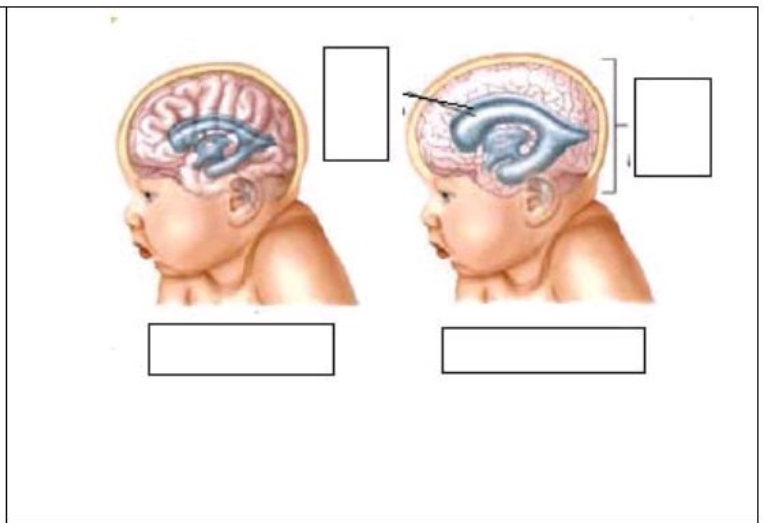
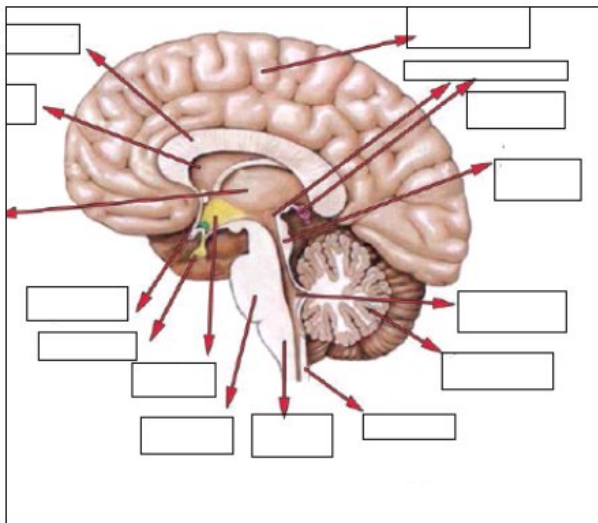
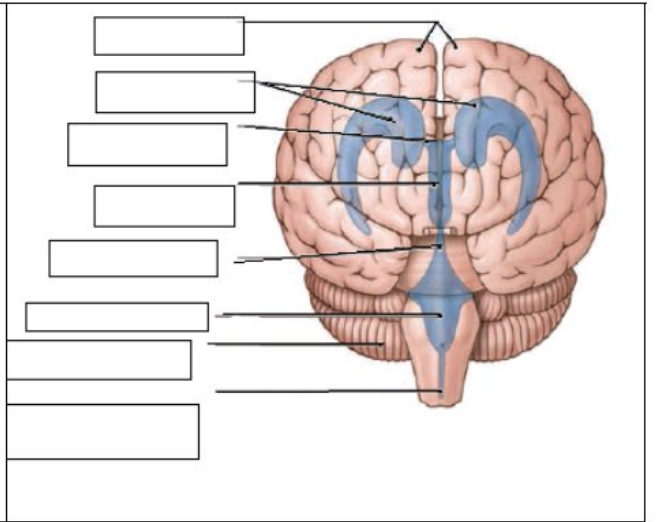
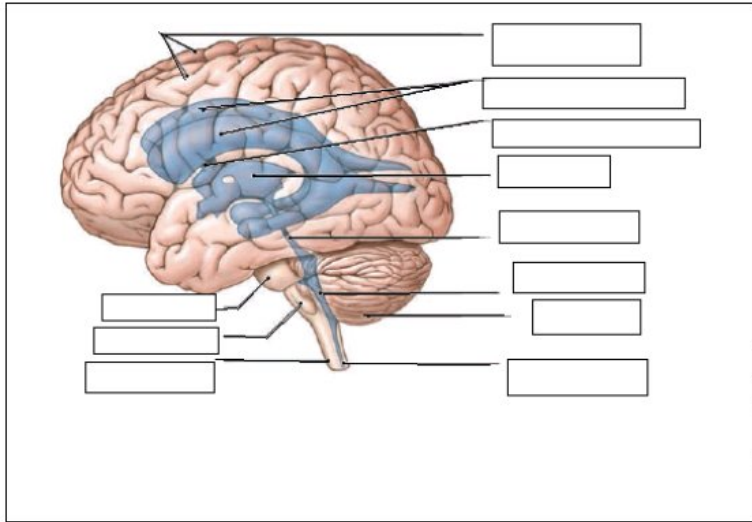
R.M: إعداد

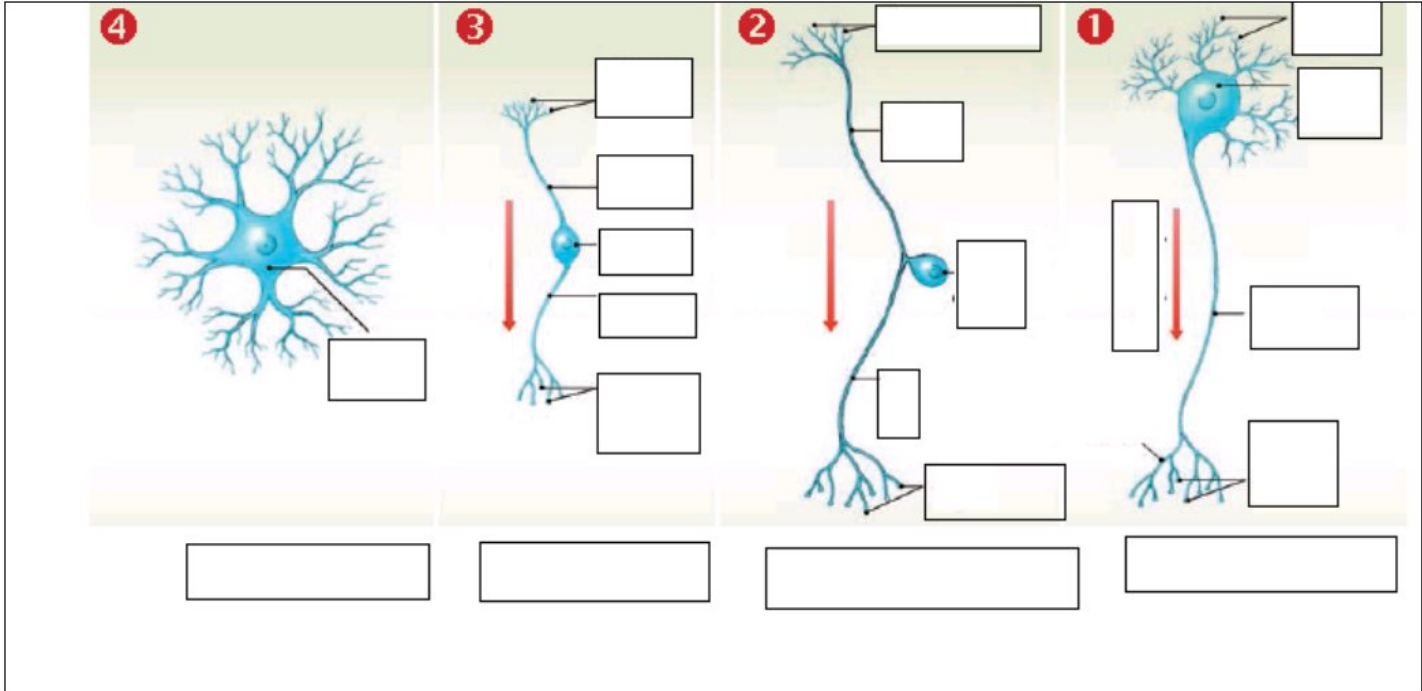
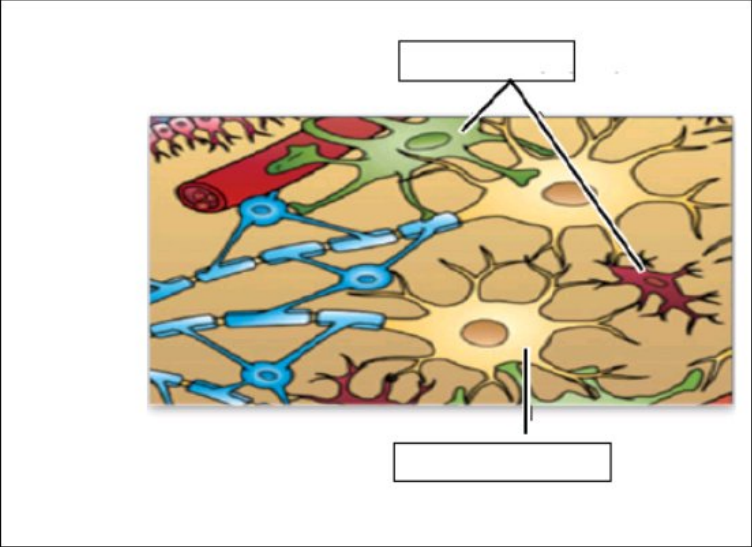
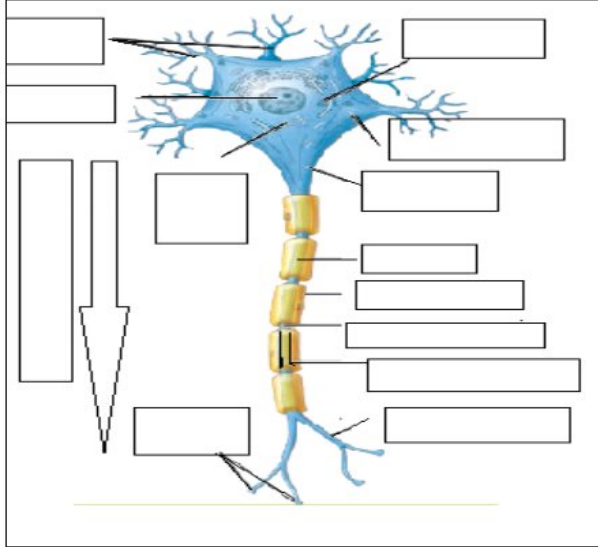
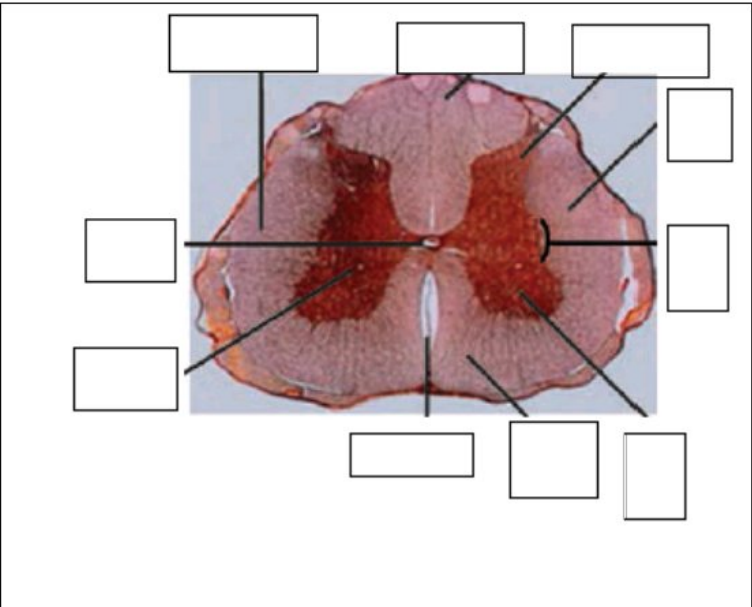
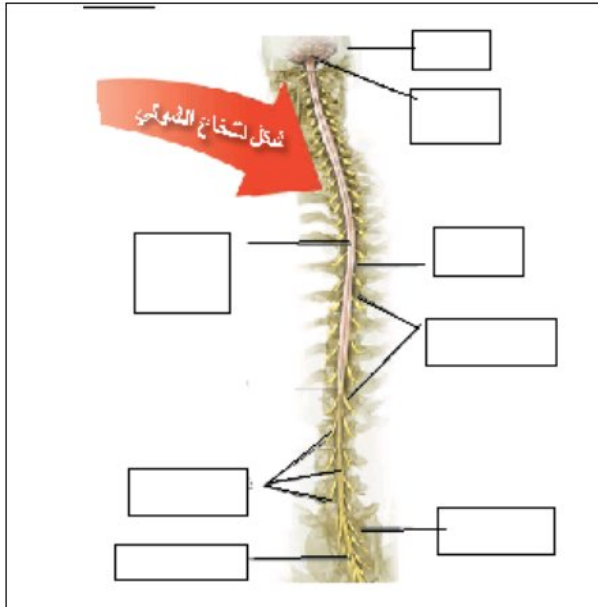


نصف الكرة المخية الأيسر



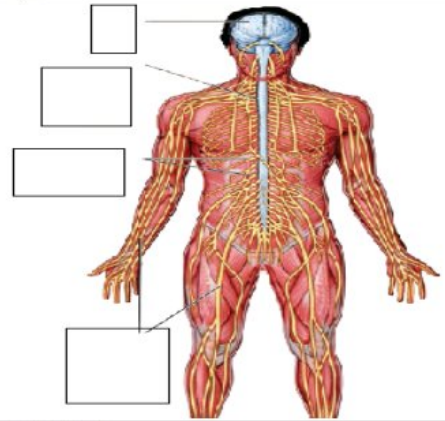
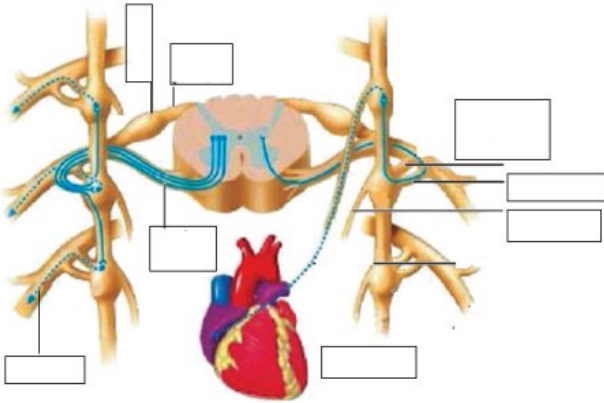
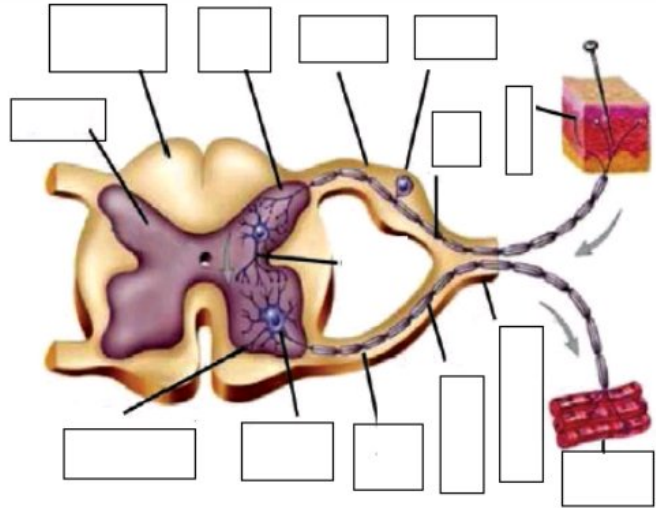
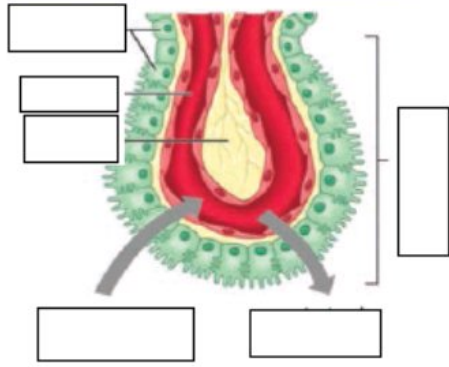
سطح ظهري من الدماغ المتوسط





R.M: إعداد

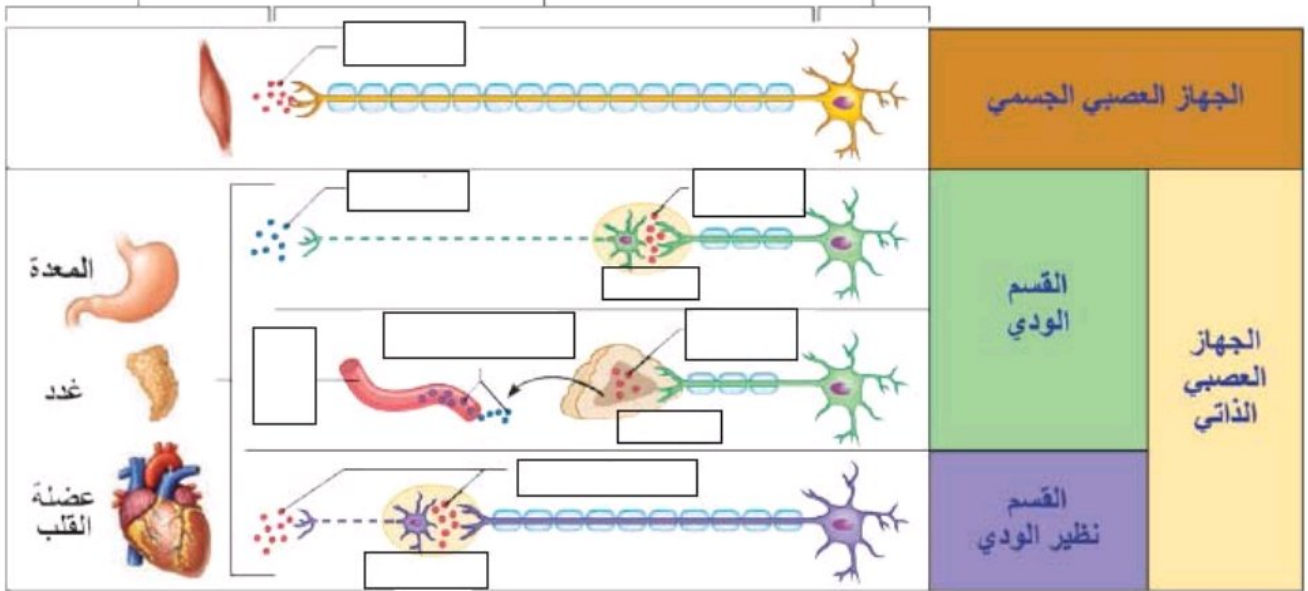
تصنيف العصبونات شكلياً

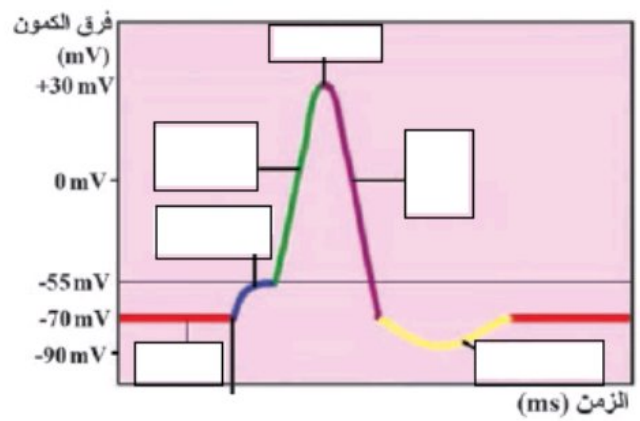
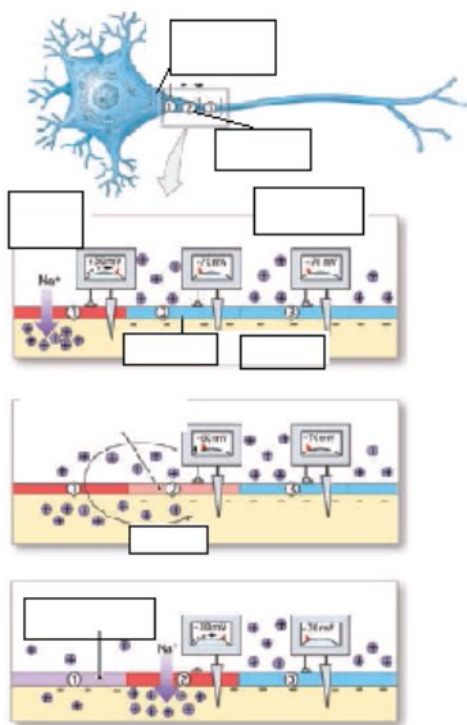
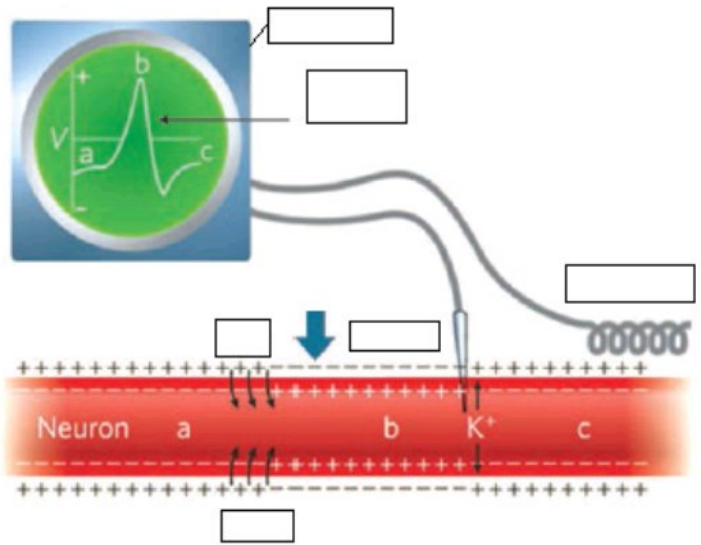
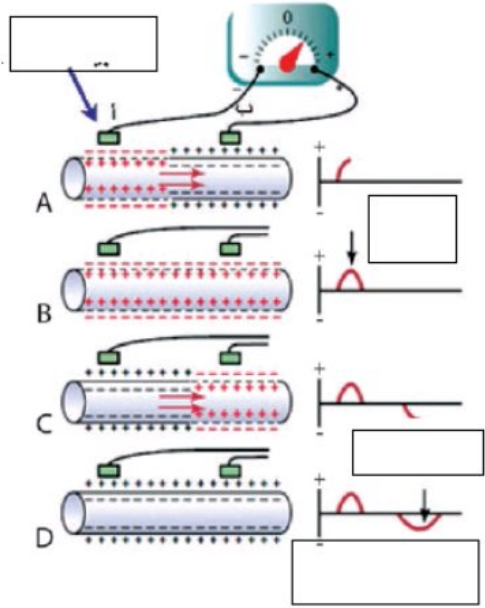
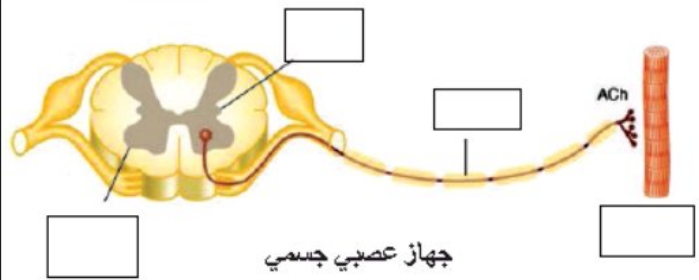
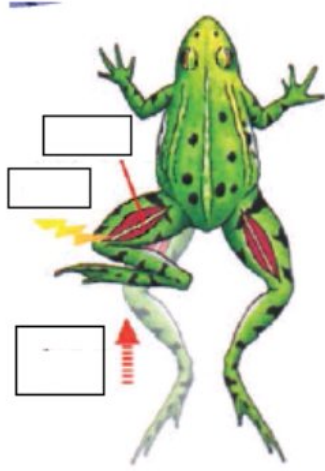


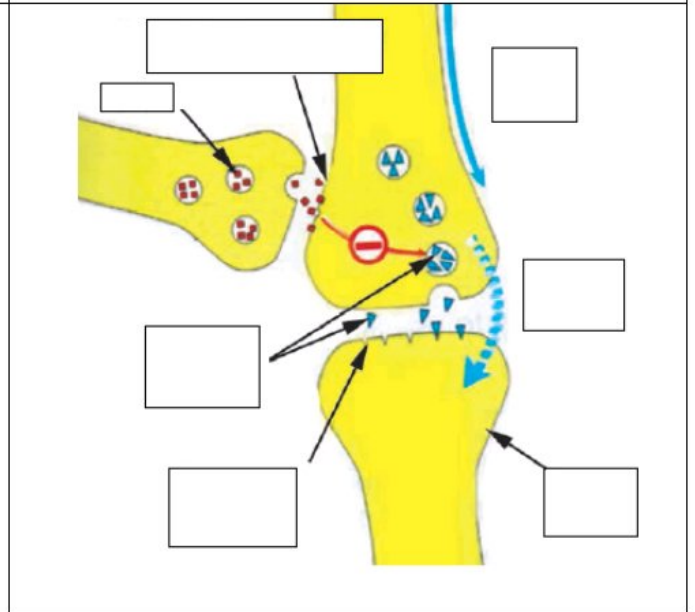
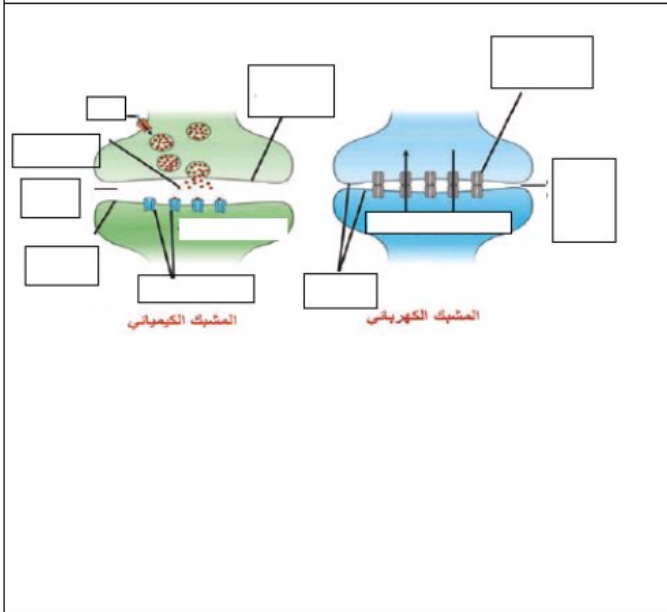
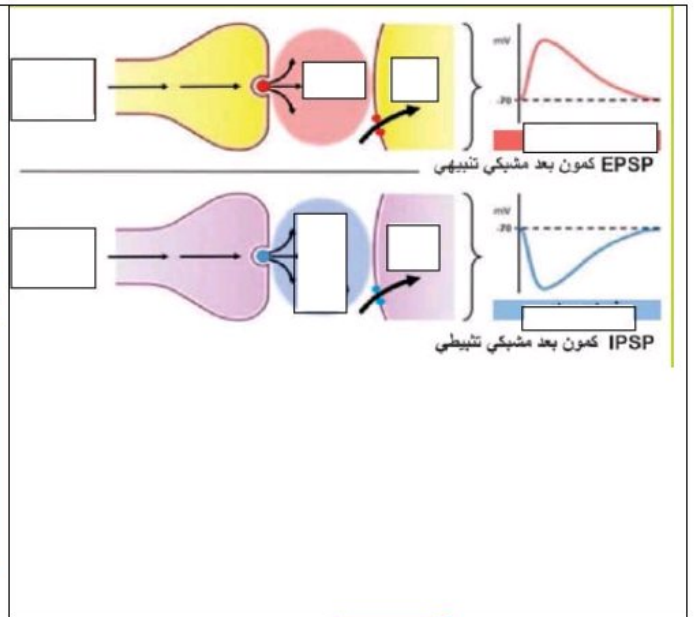
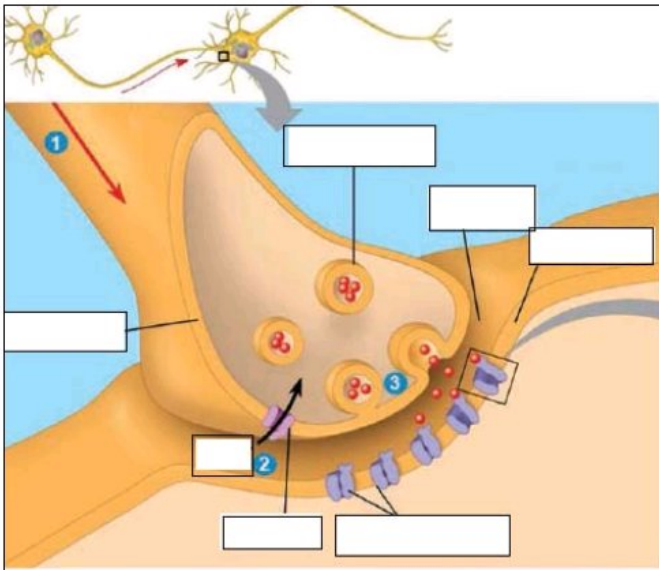
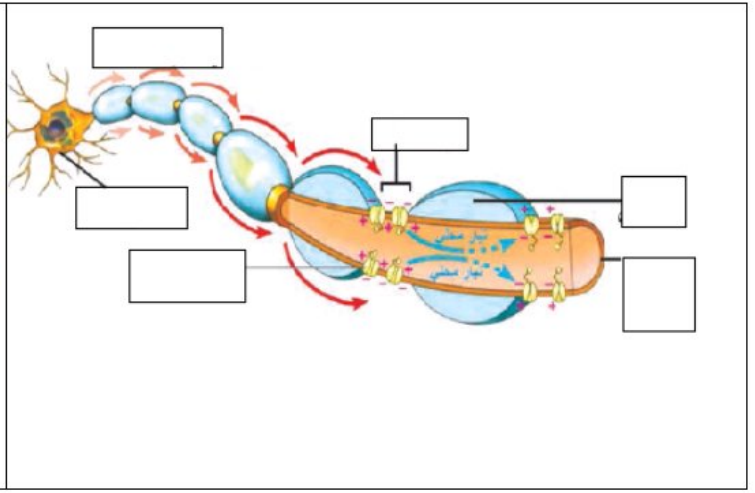
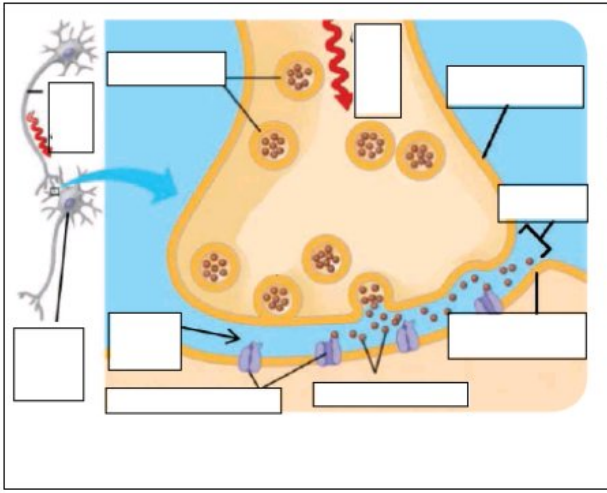
الاعضاء المستهدفة (المتأثرة)

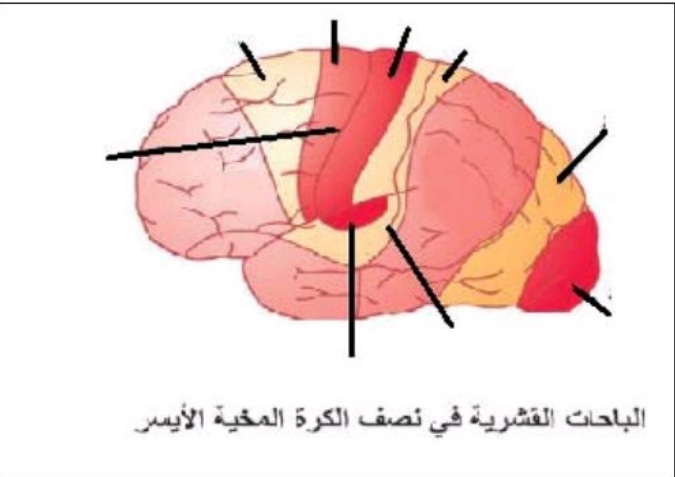
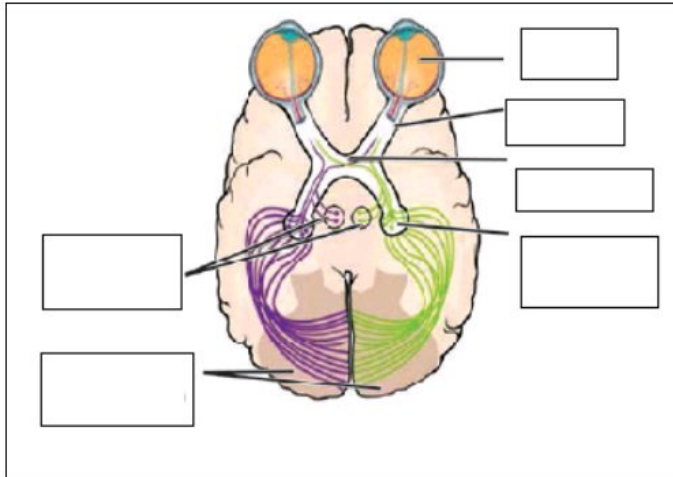
الجهاز العصبي المحيطي

الجهاز العصبي المركزي

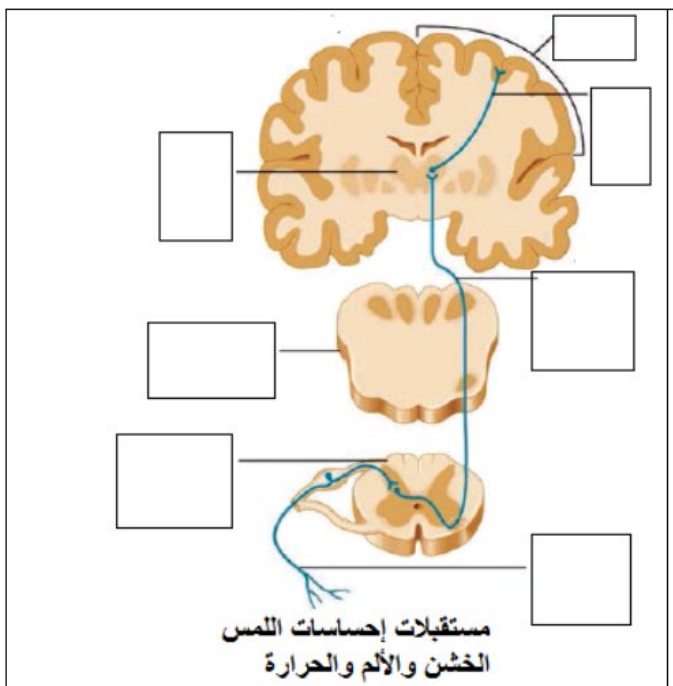
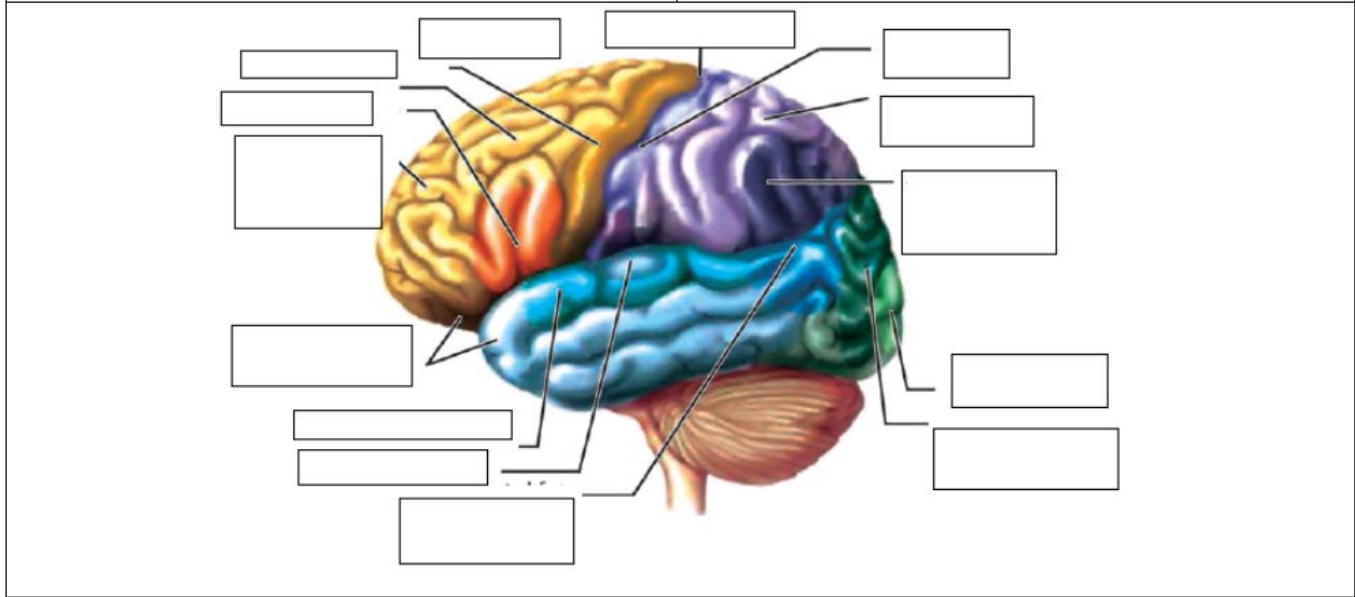




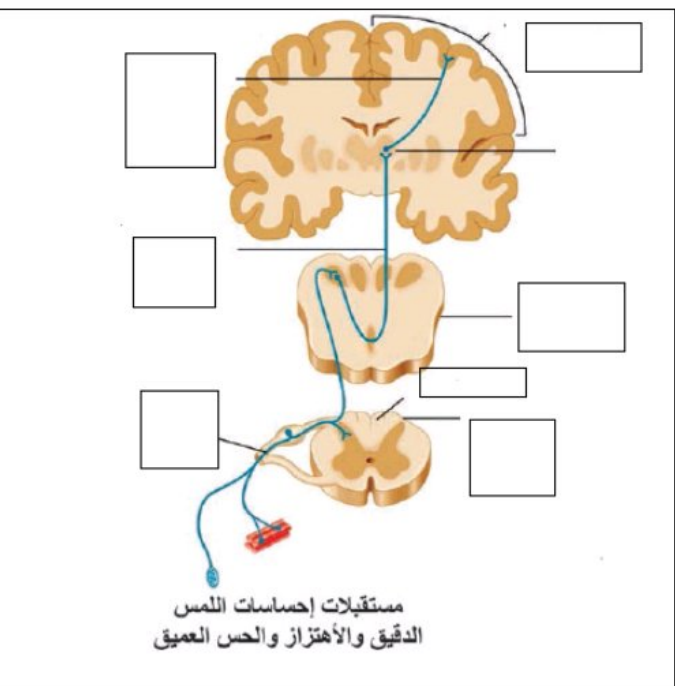




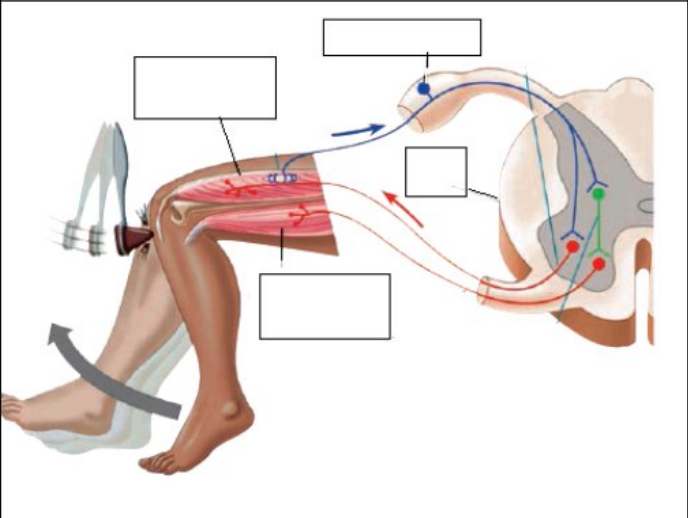
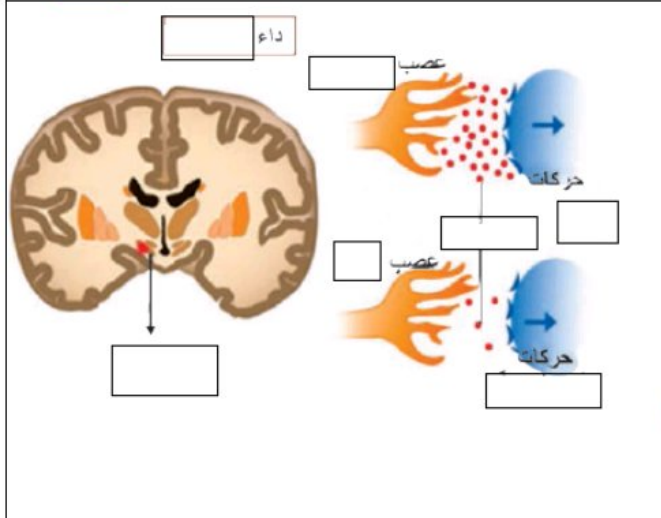
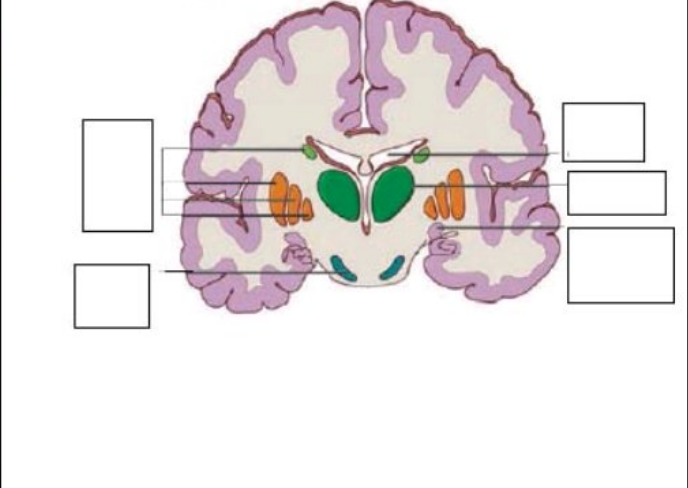
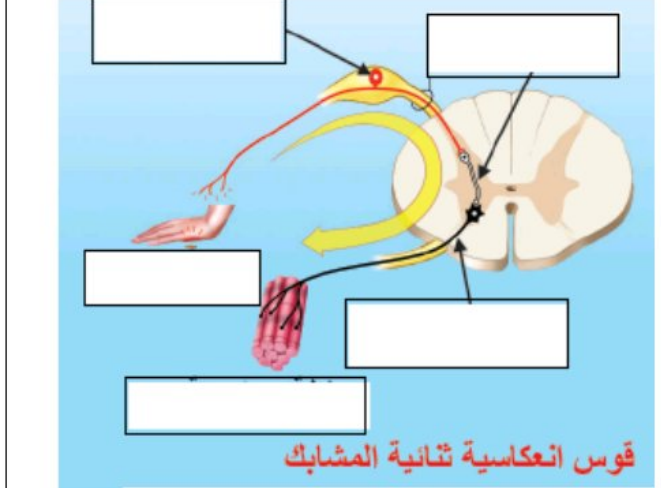
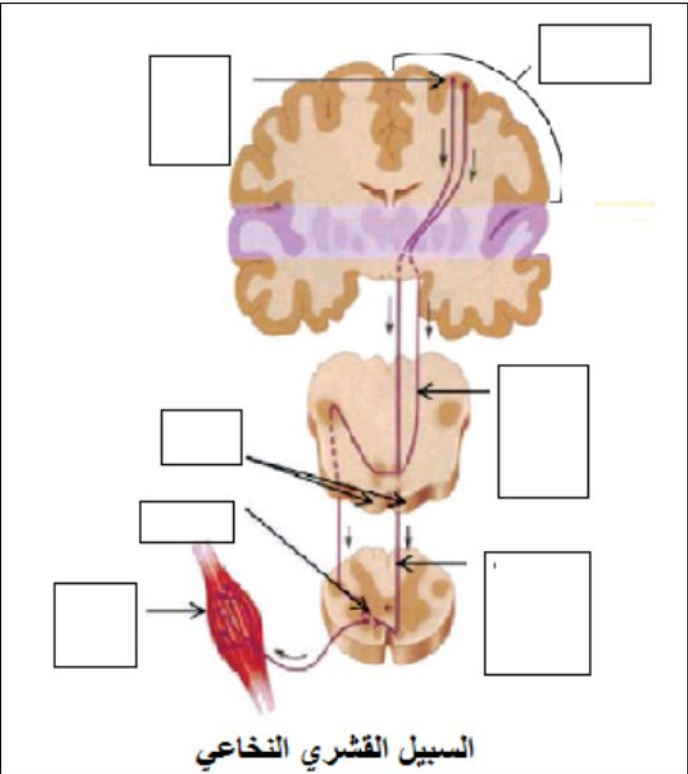
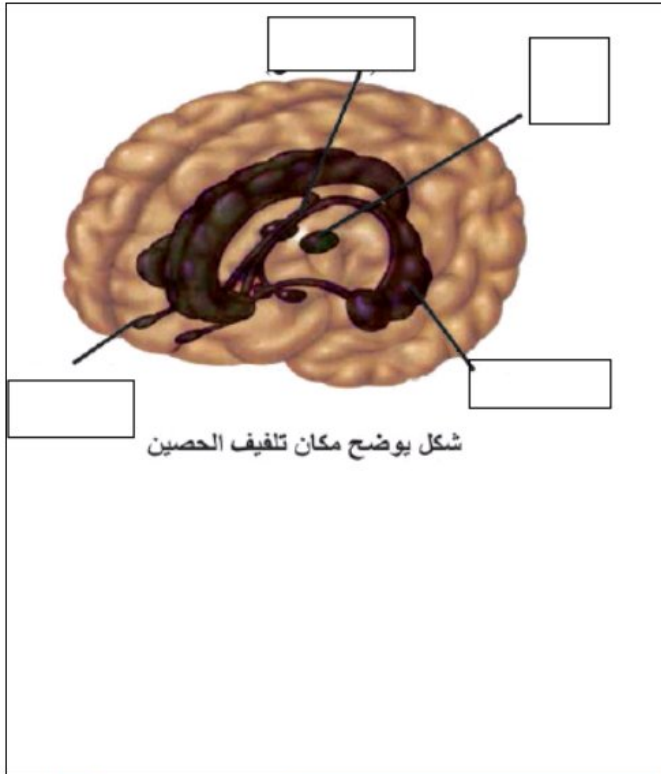
الباحات القشرية في نصف الكرة المخية الأيسر

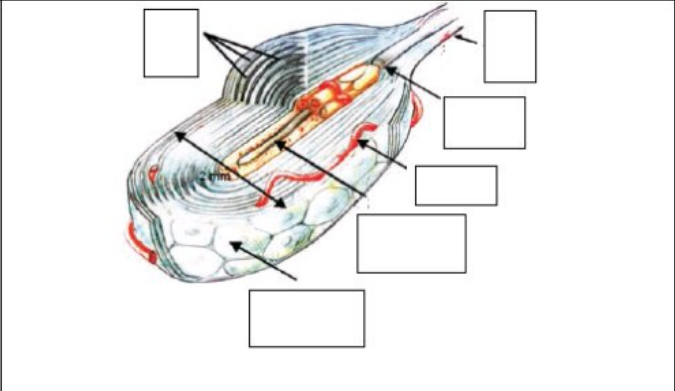
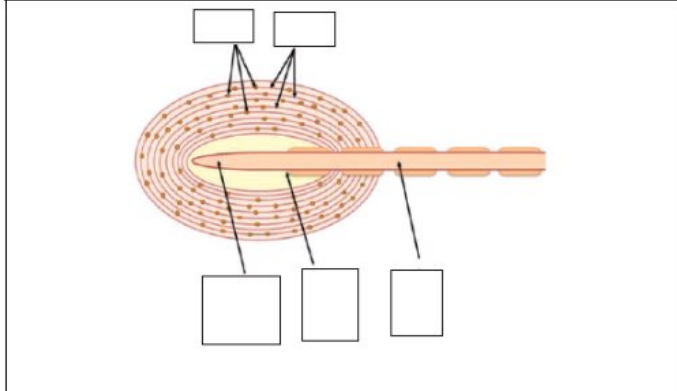
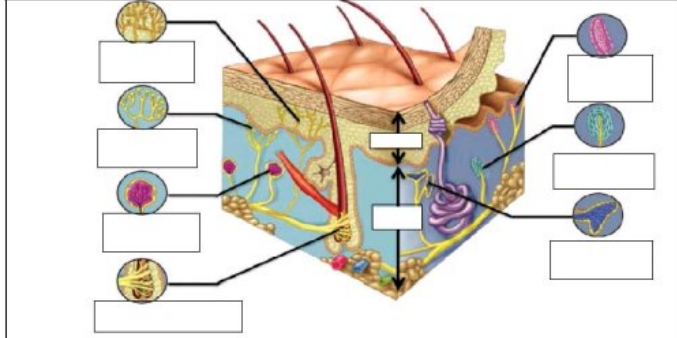
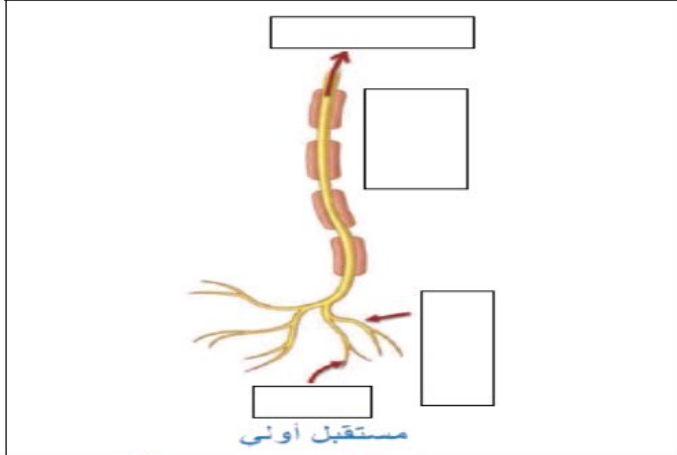
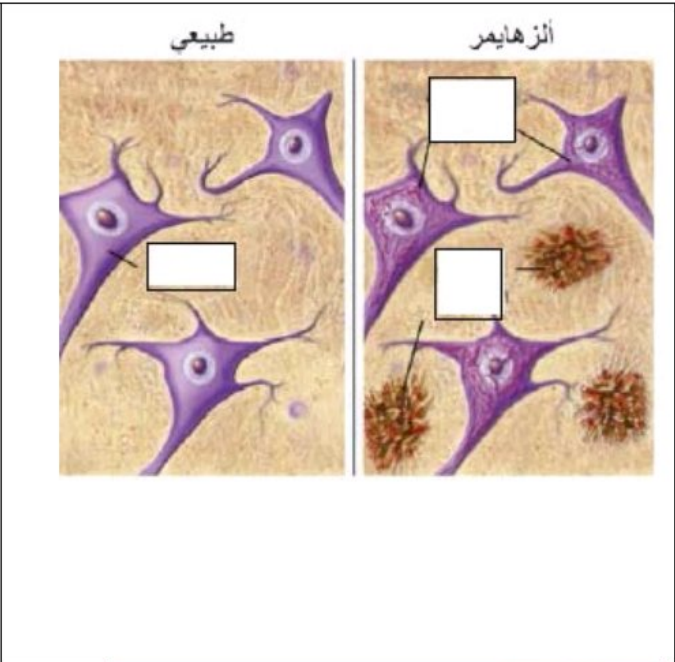
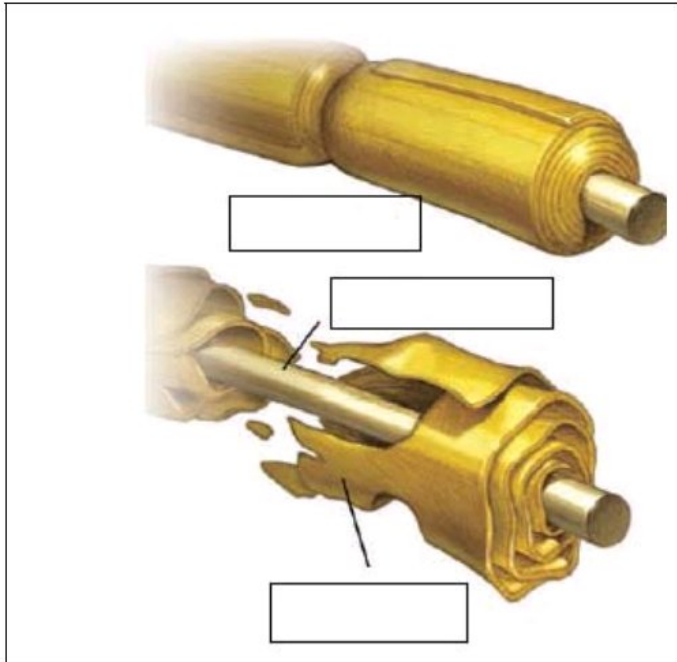


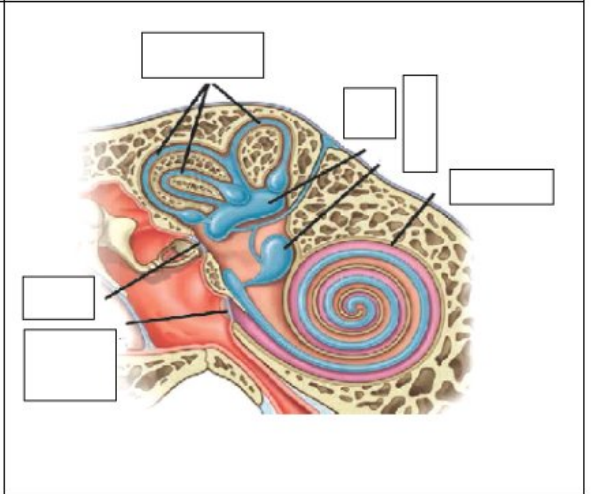
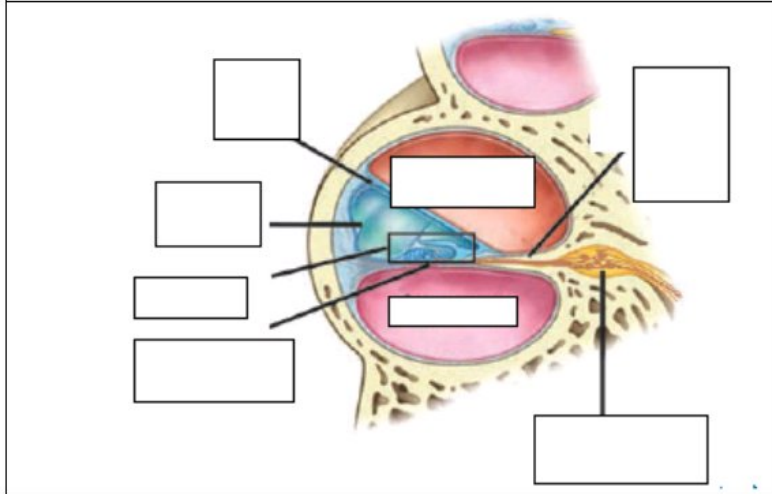
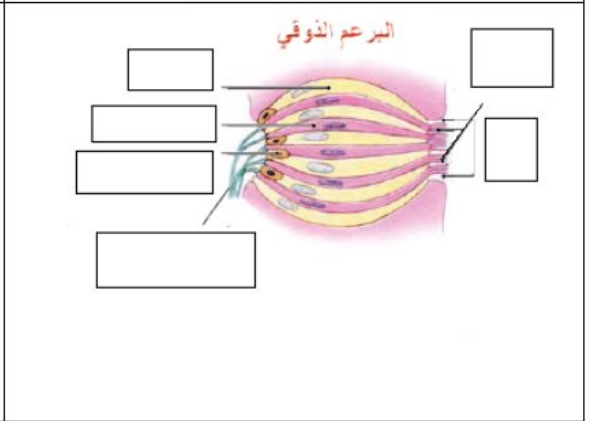
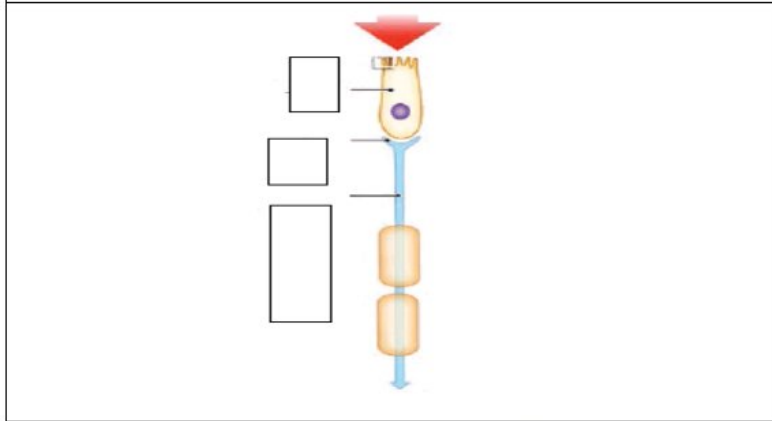
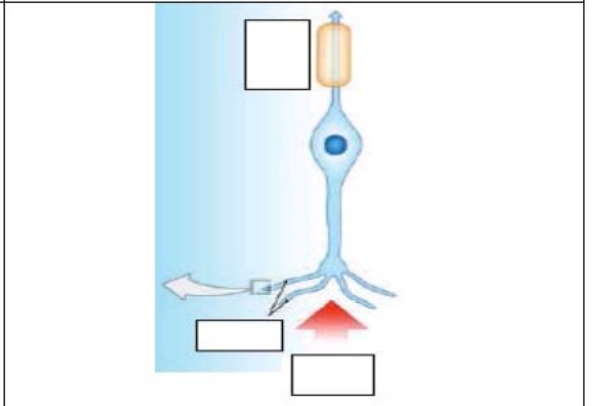
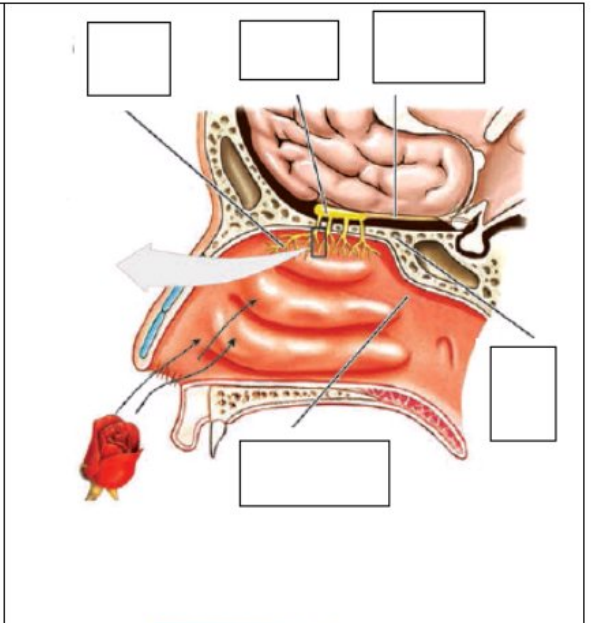
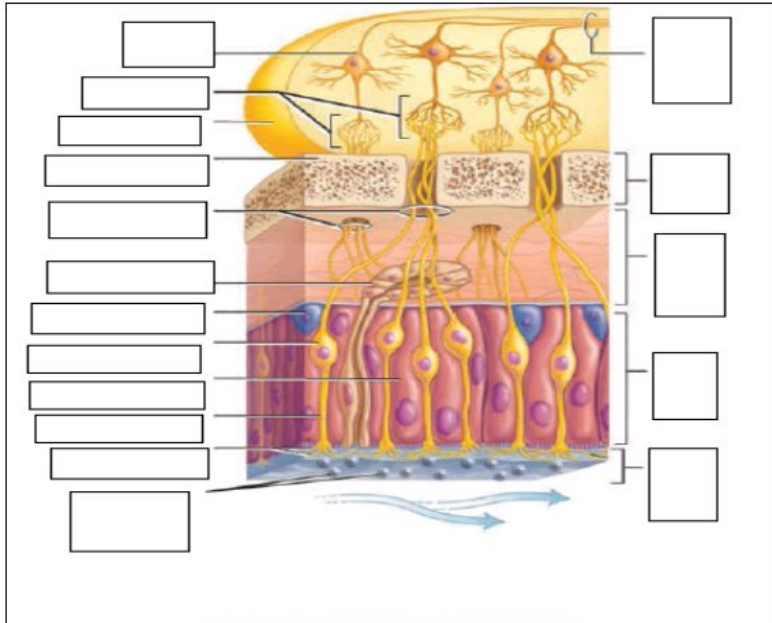
مستقبلات إحساسات اللمس  
الخشن والألم والحرارة



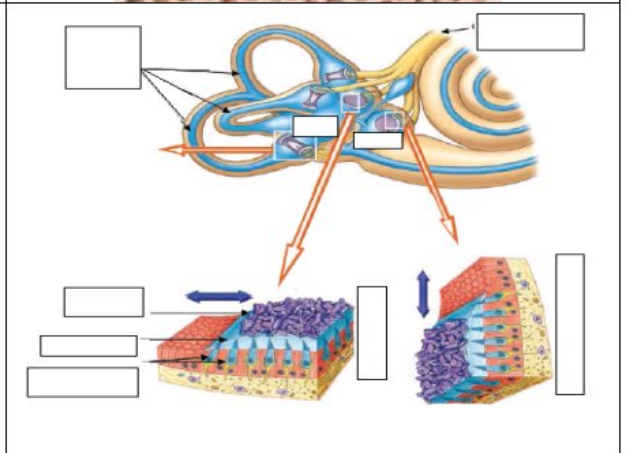
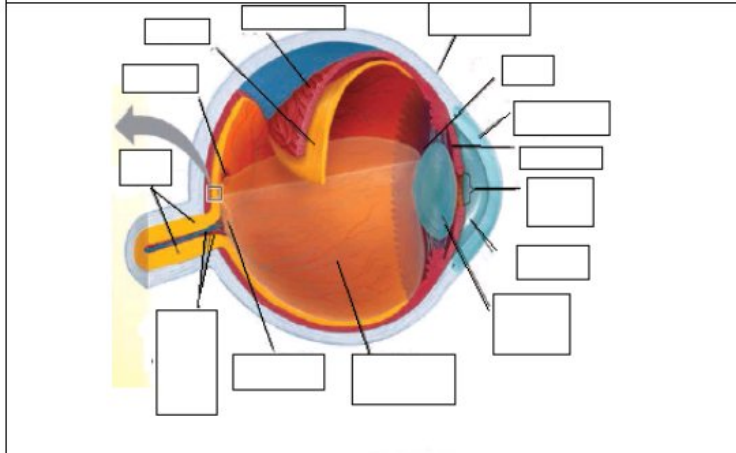
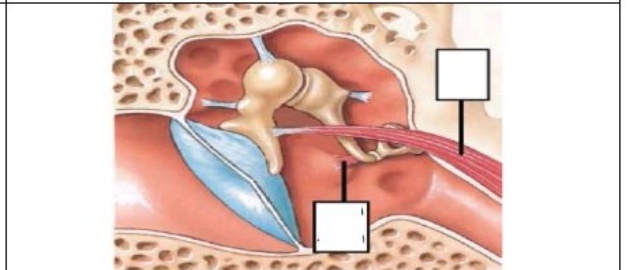
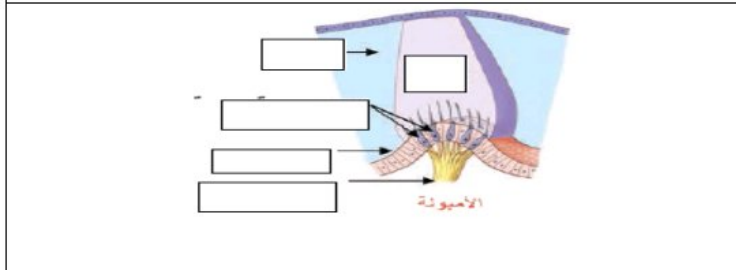
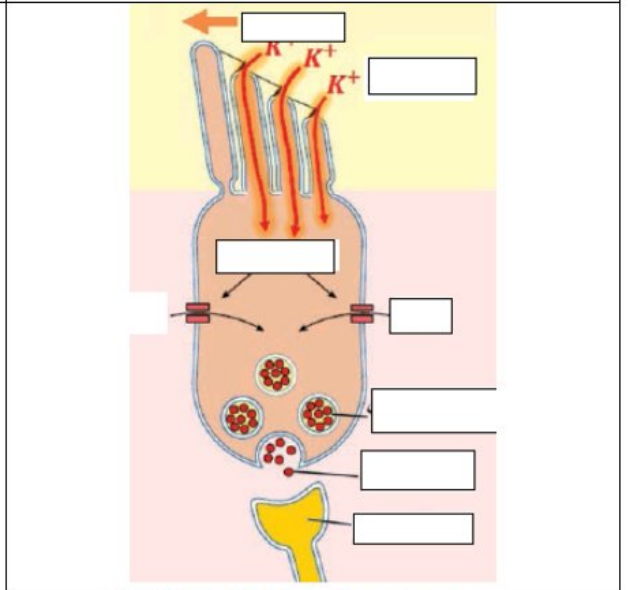
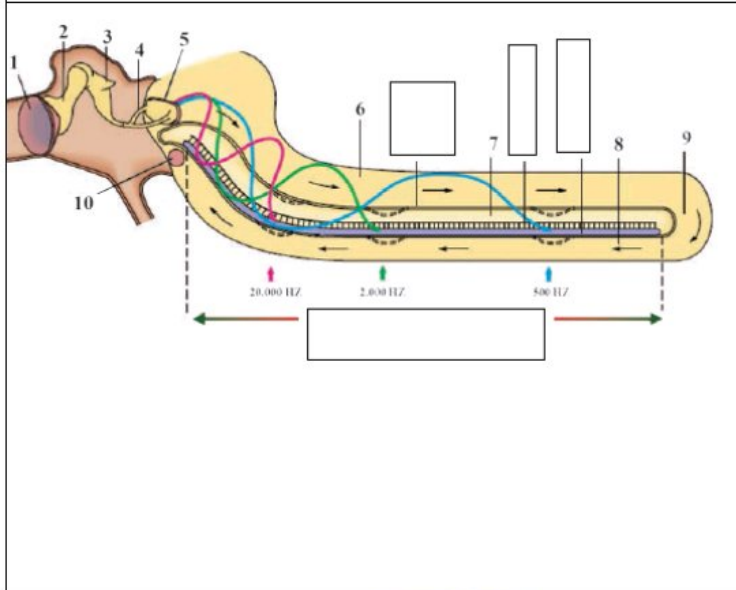
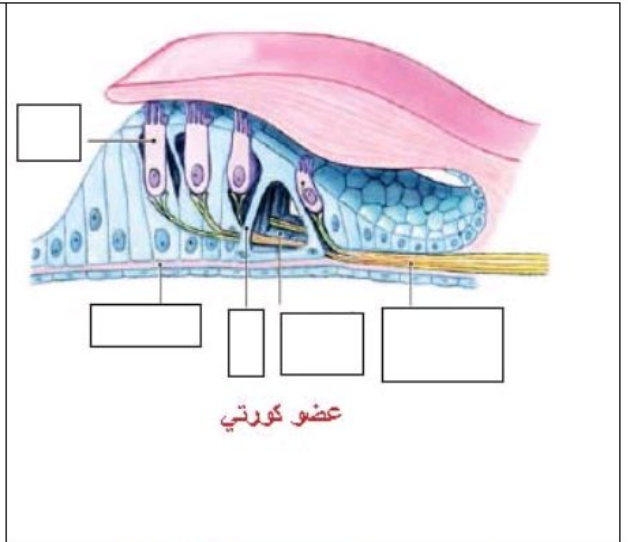
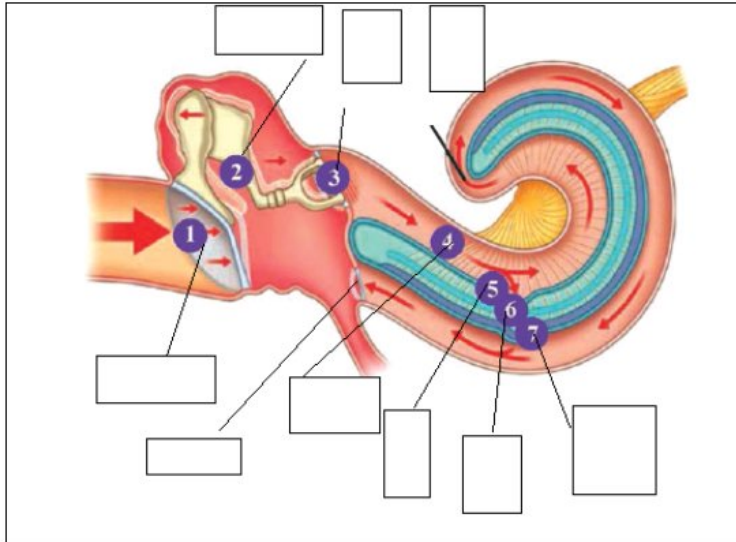
مستقبلات إحساسات اللمس  
الدقيق والأهتزاز والحس العميق



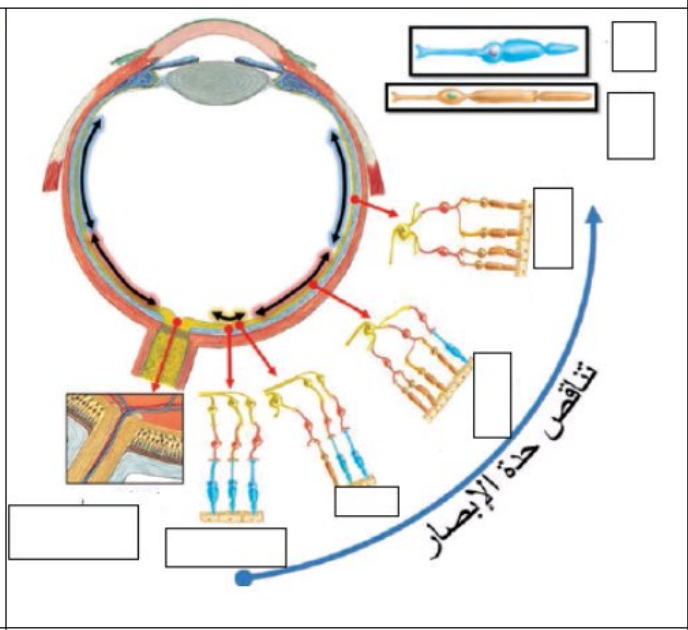
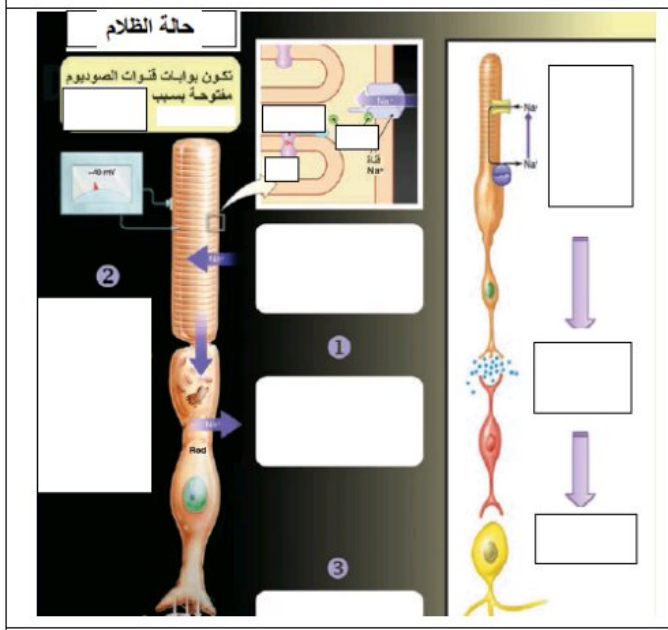
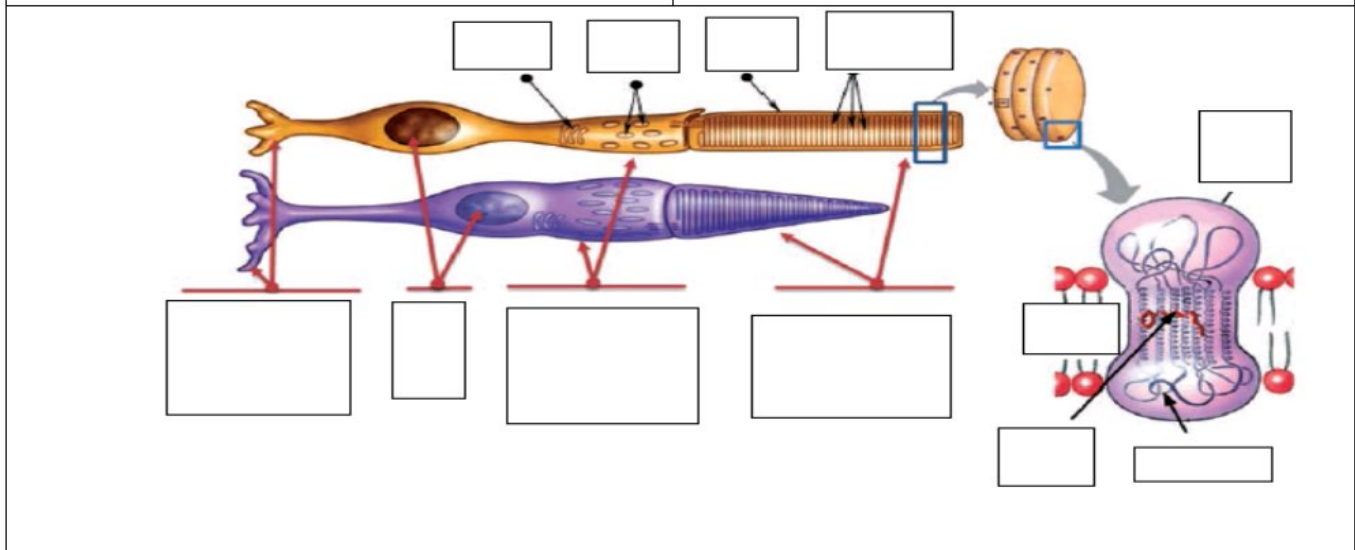
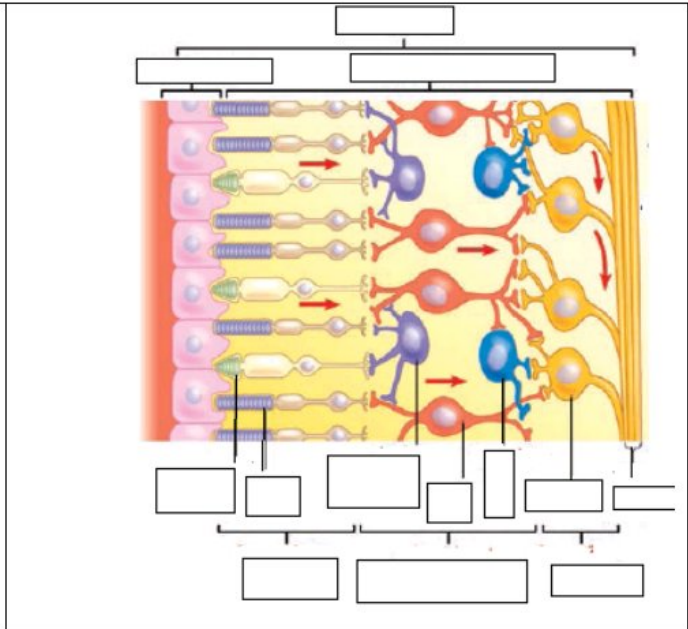
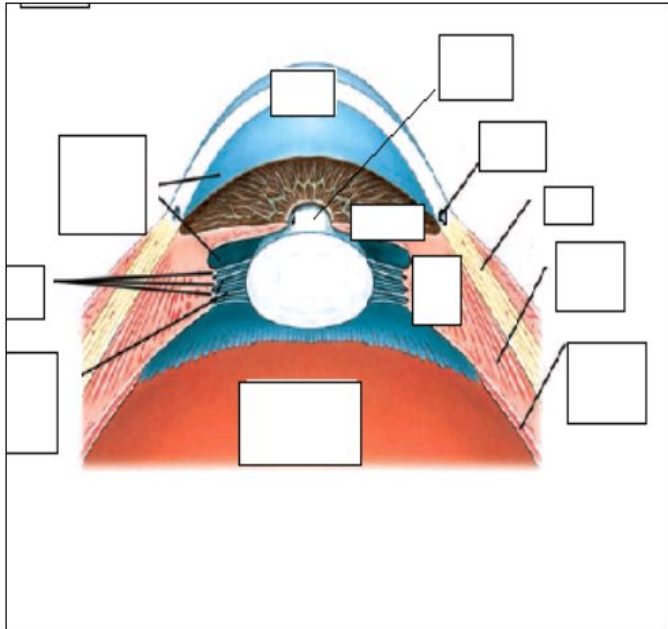




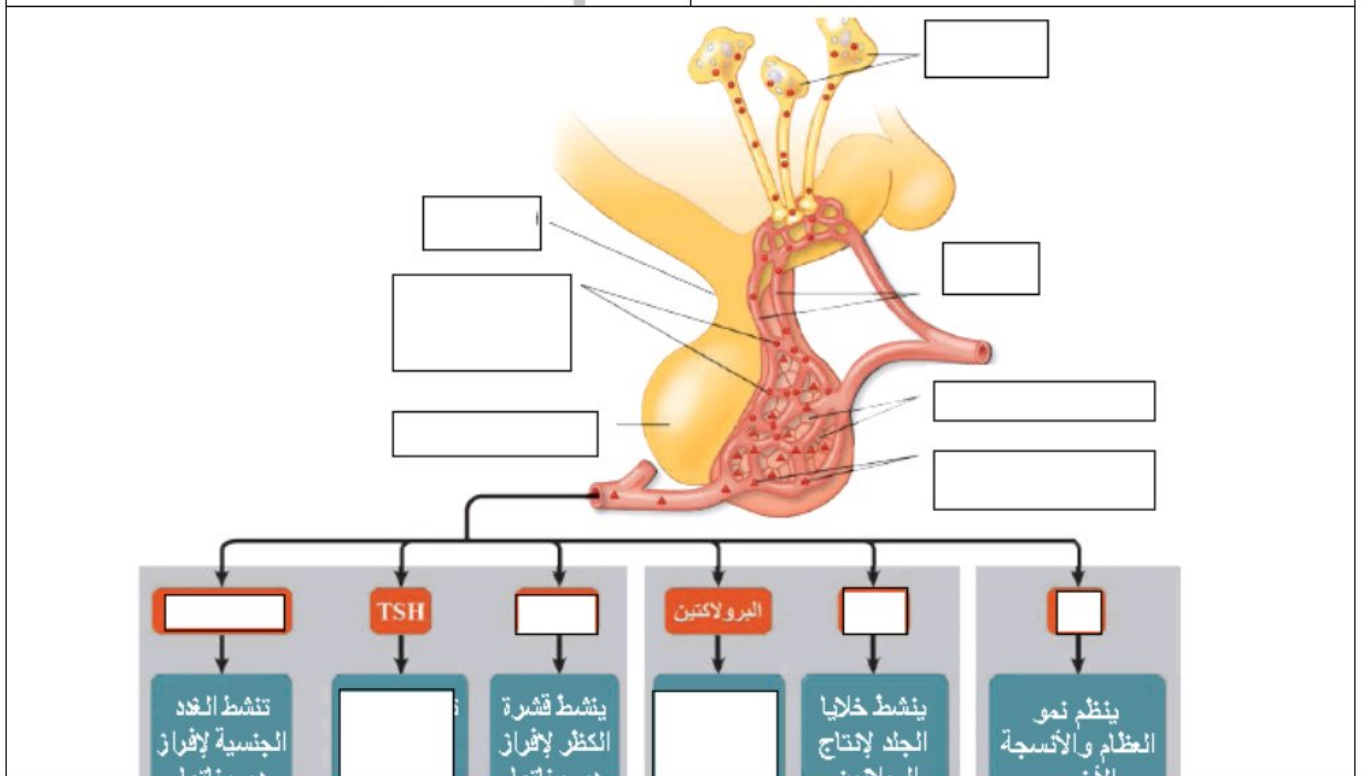
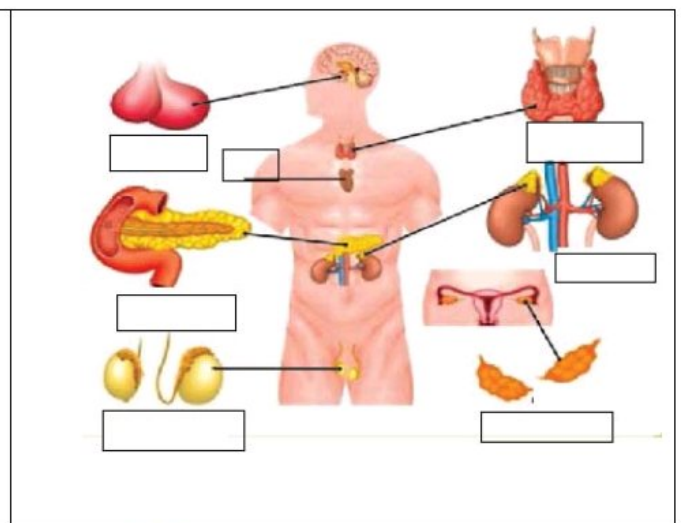
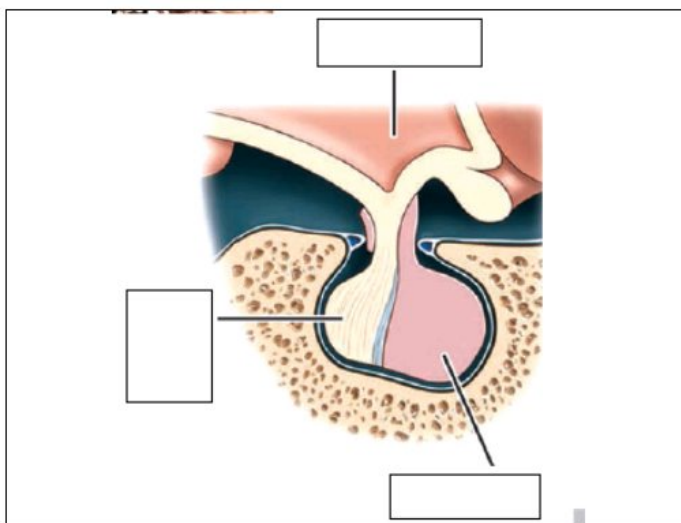
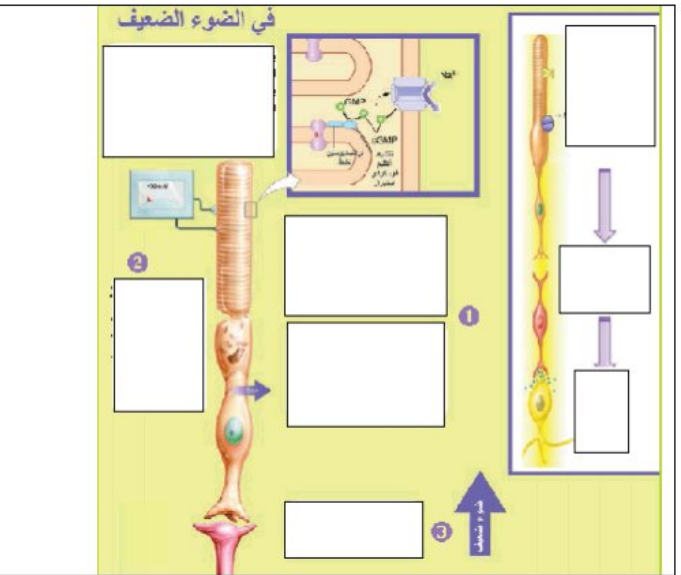
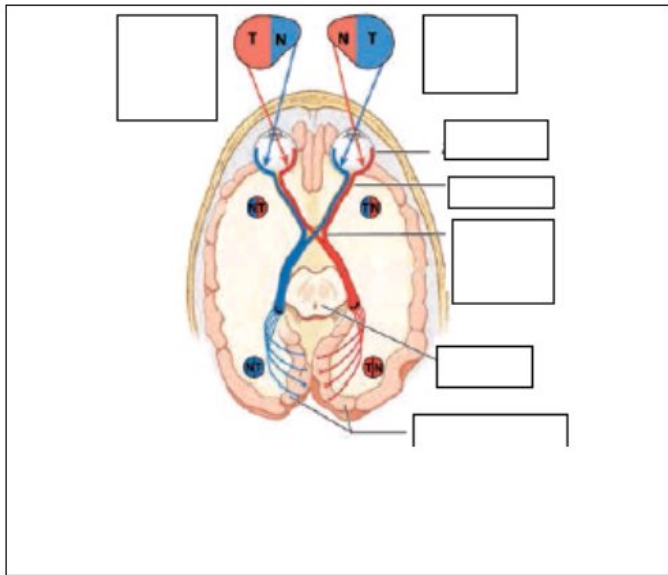
R.M: إعداد



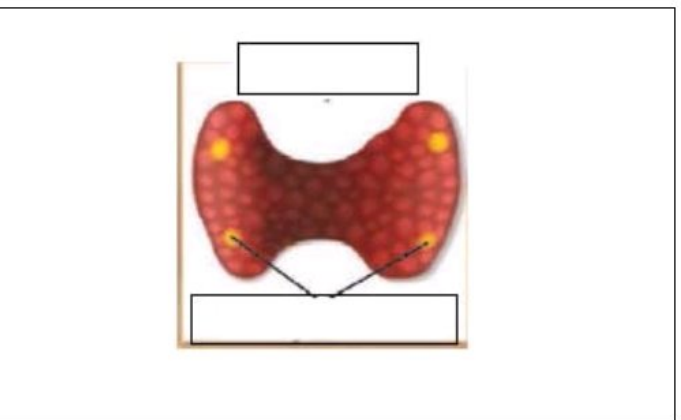
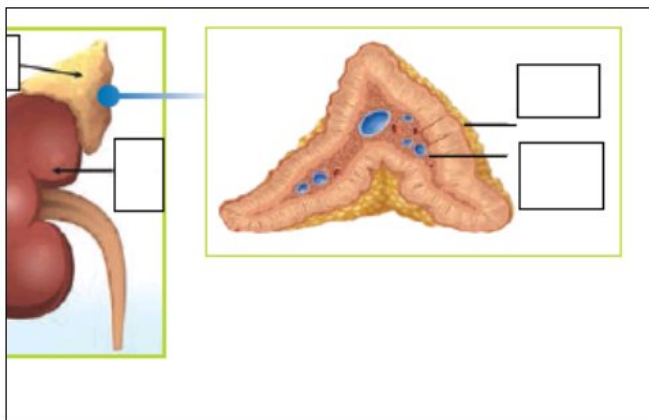
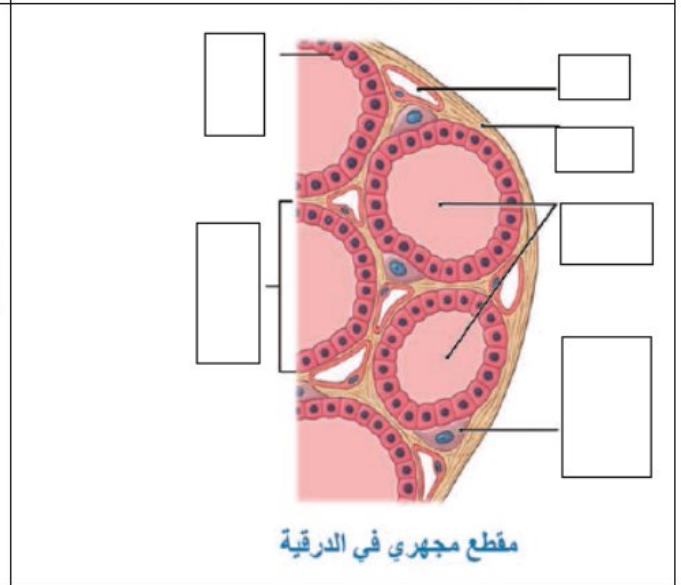
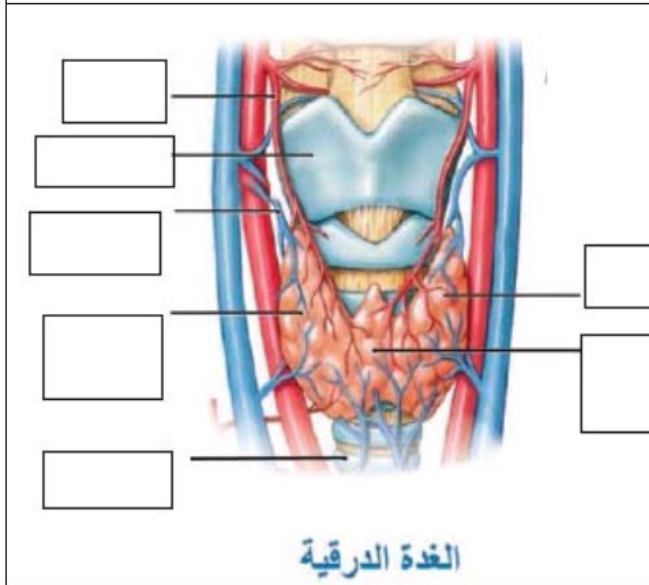
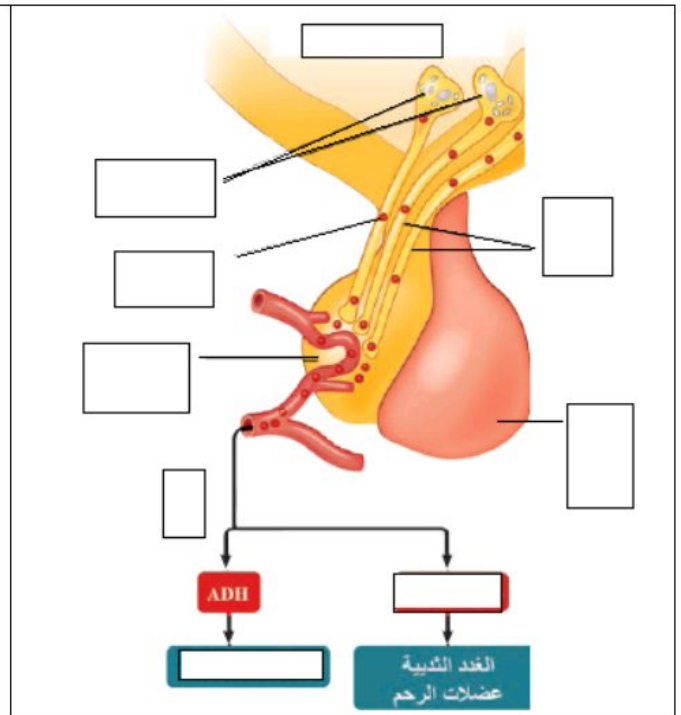
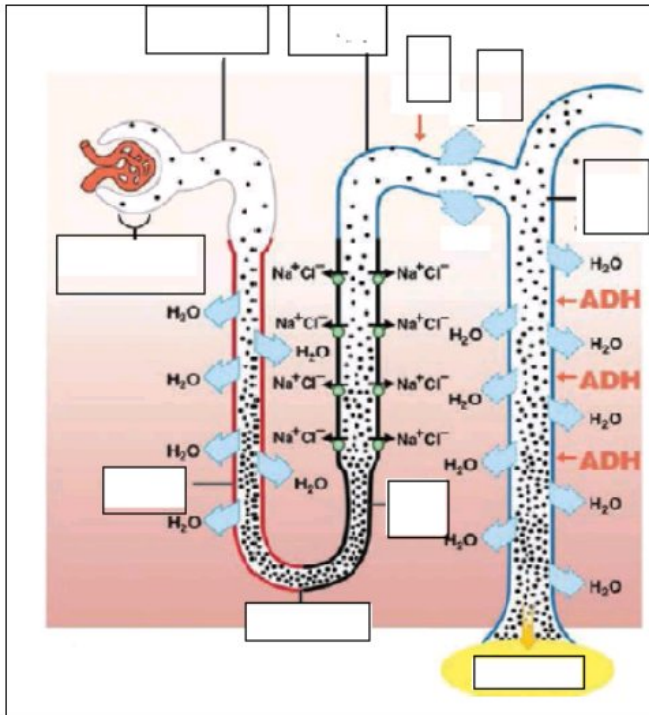
R.M: إعداد

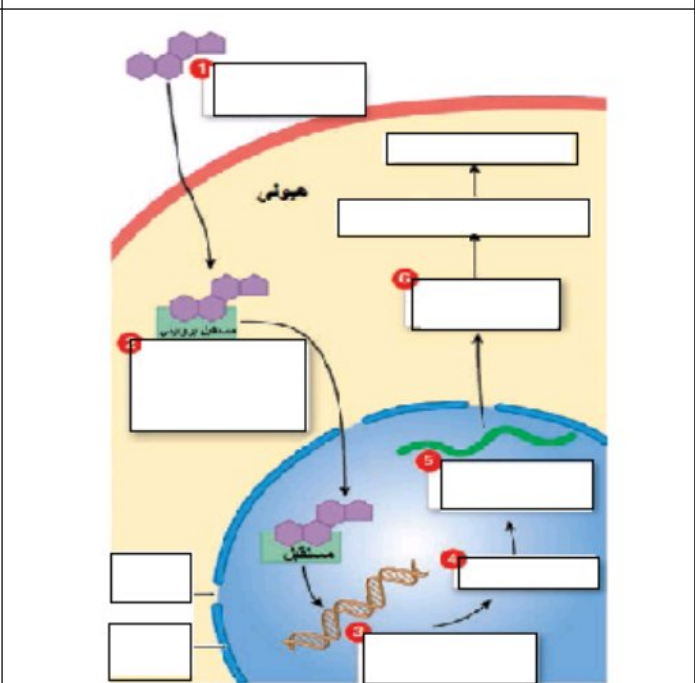
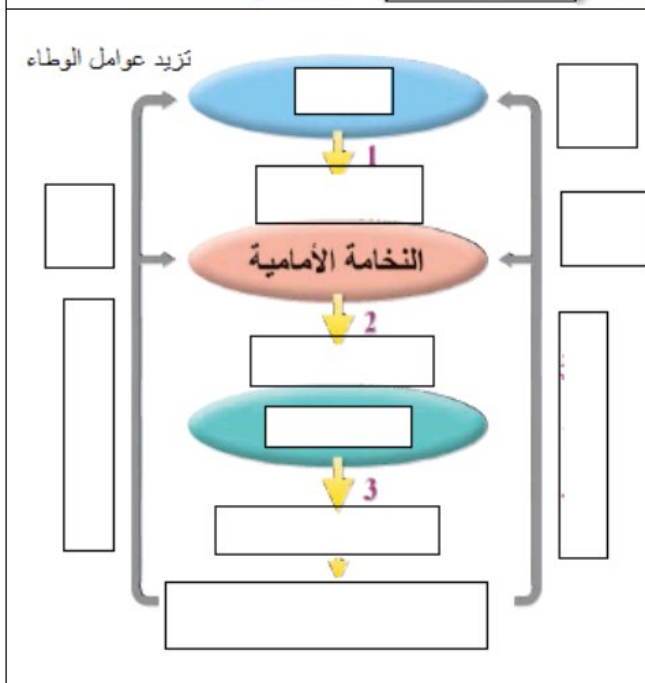
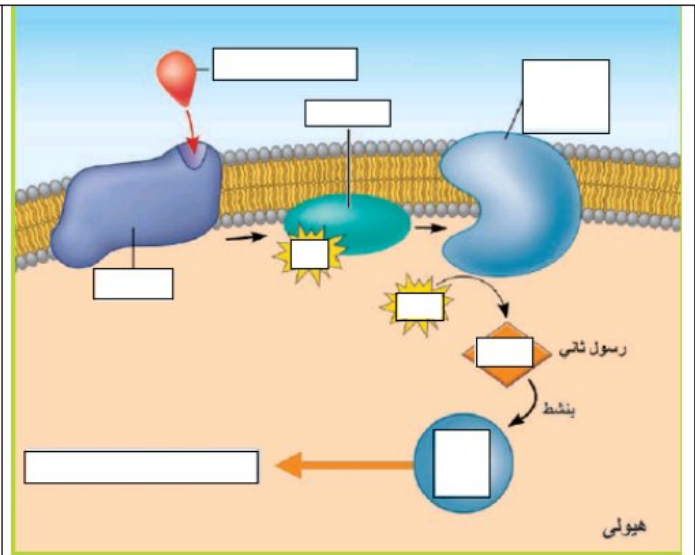
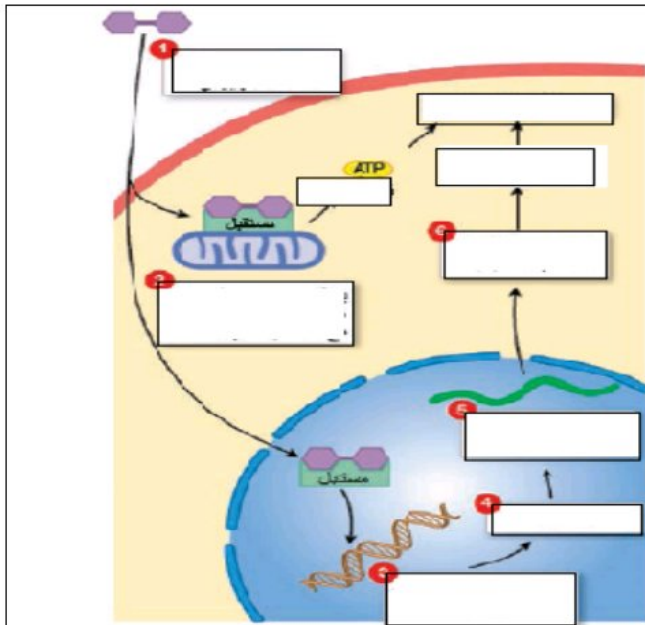


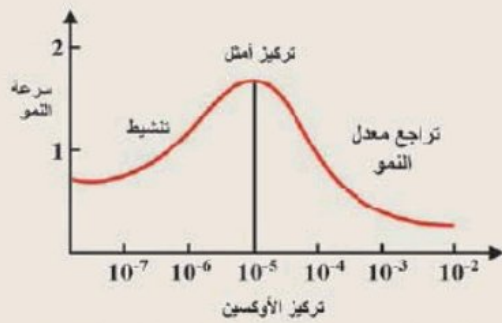
R.M: إعداد



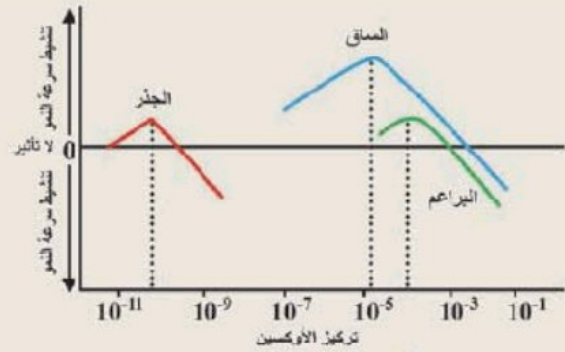
R.M: إعداد



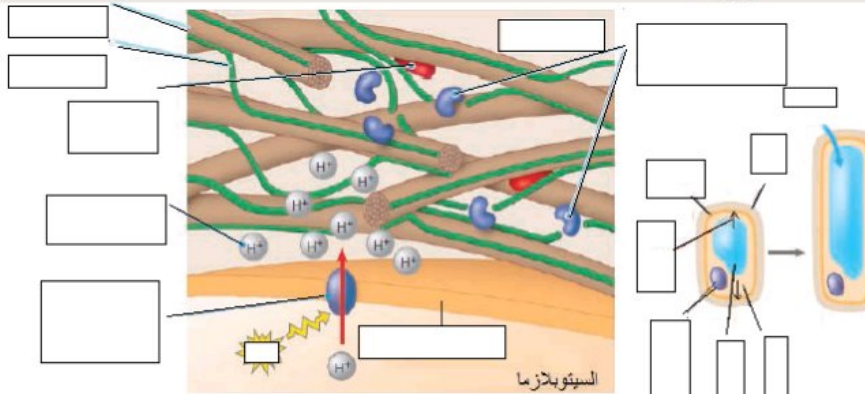




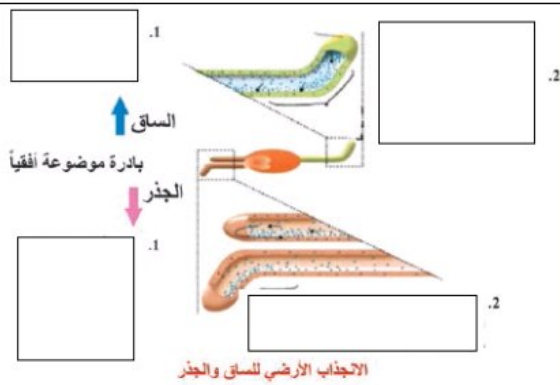
تأثير تركيز الأوكسين في نمو واستطالة النبات (أخذت المساق كمثال)  
(أ)



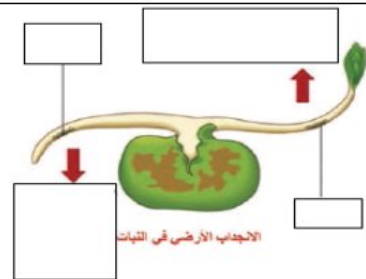
تأثير تركيز الأوكسين على نمو التمدد النباتي  
(ب)



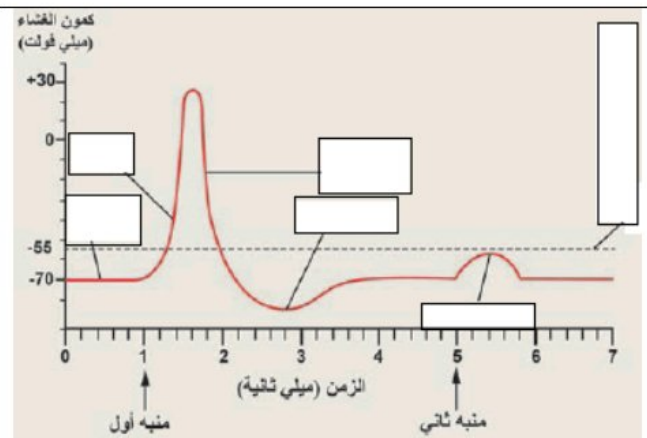
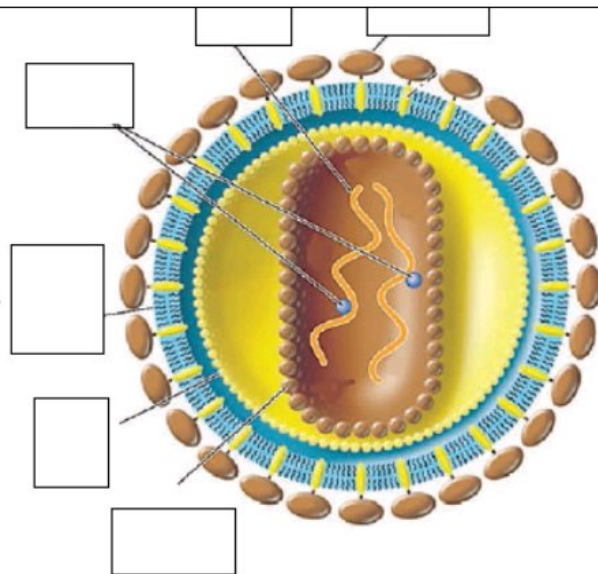
استطالة الخلية النباتية بتأثير الأوكسينات

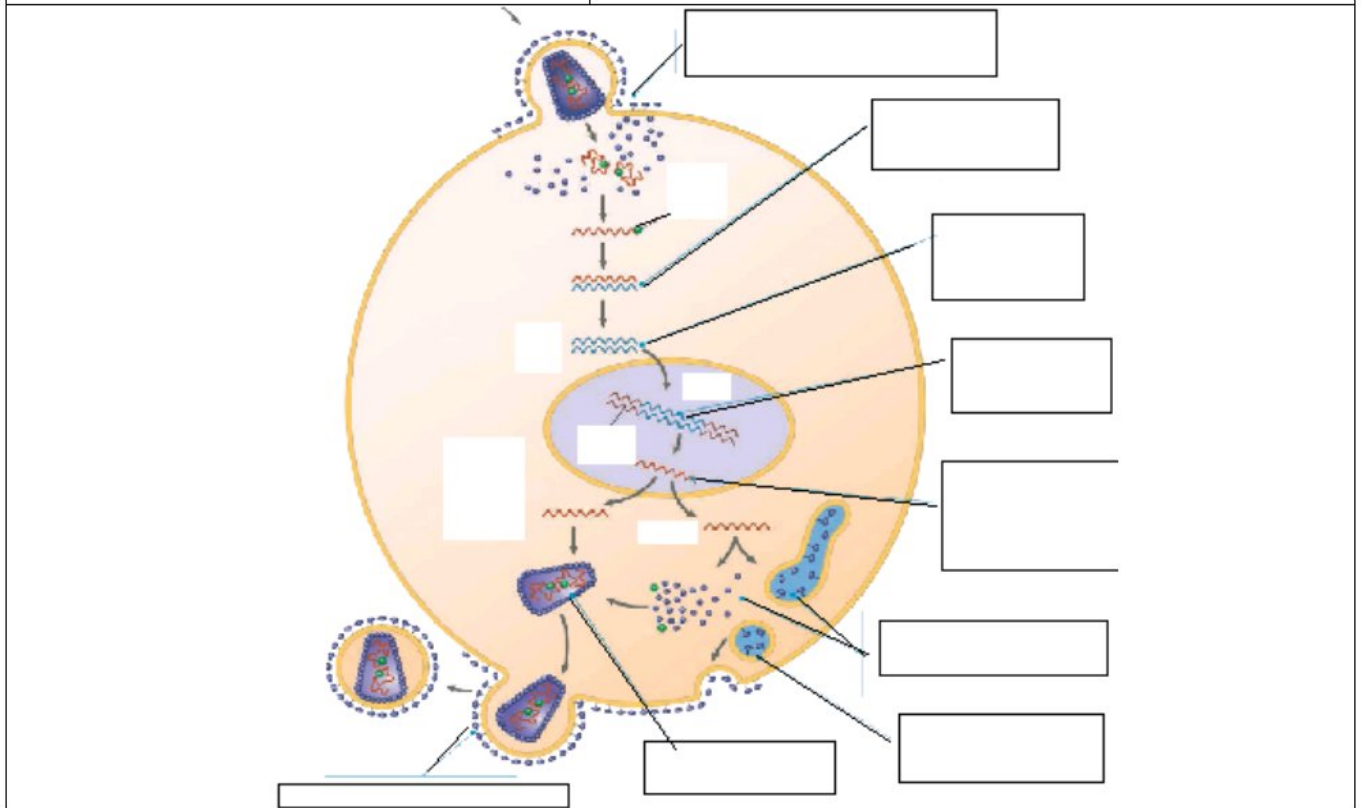
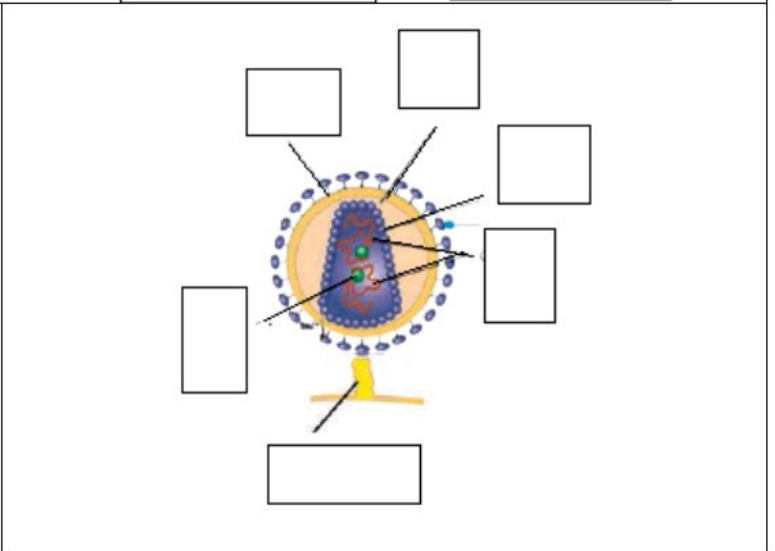
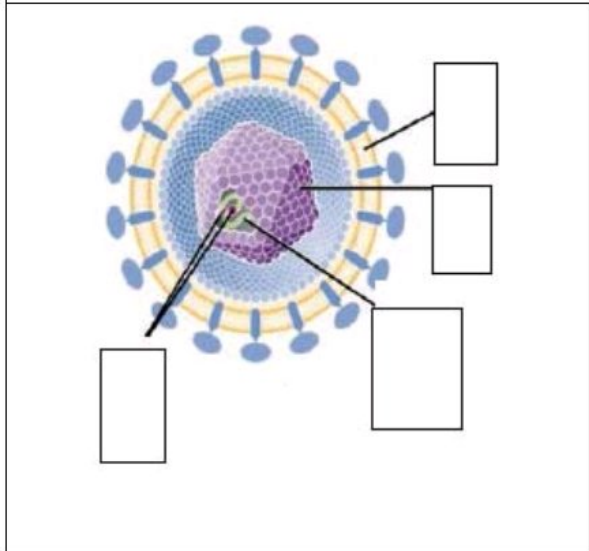
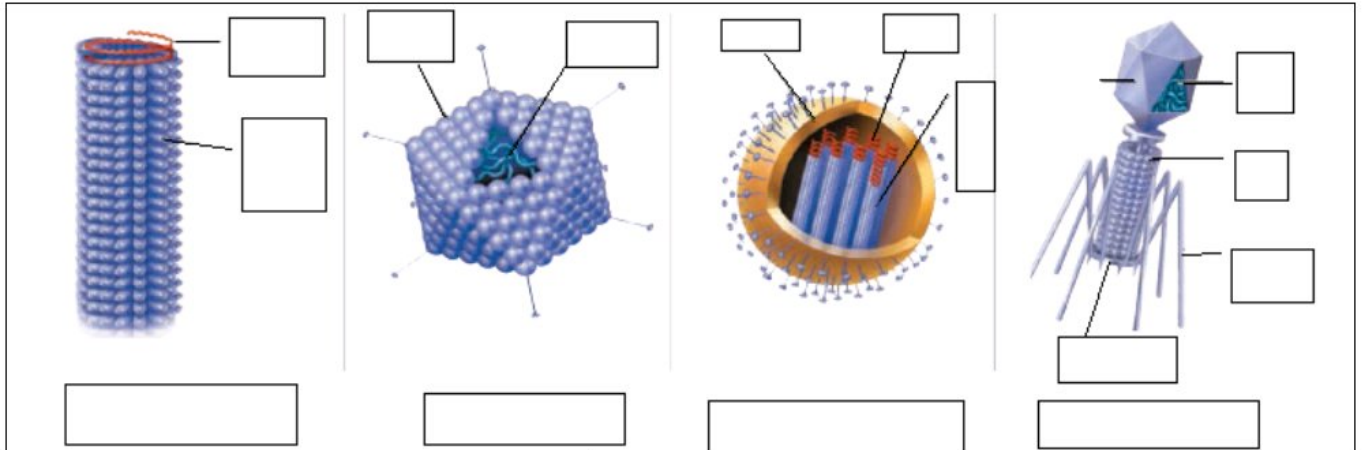


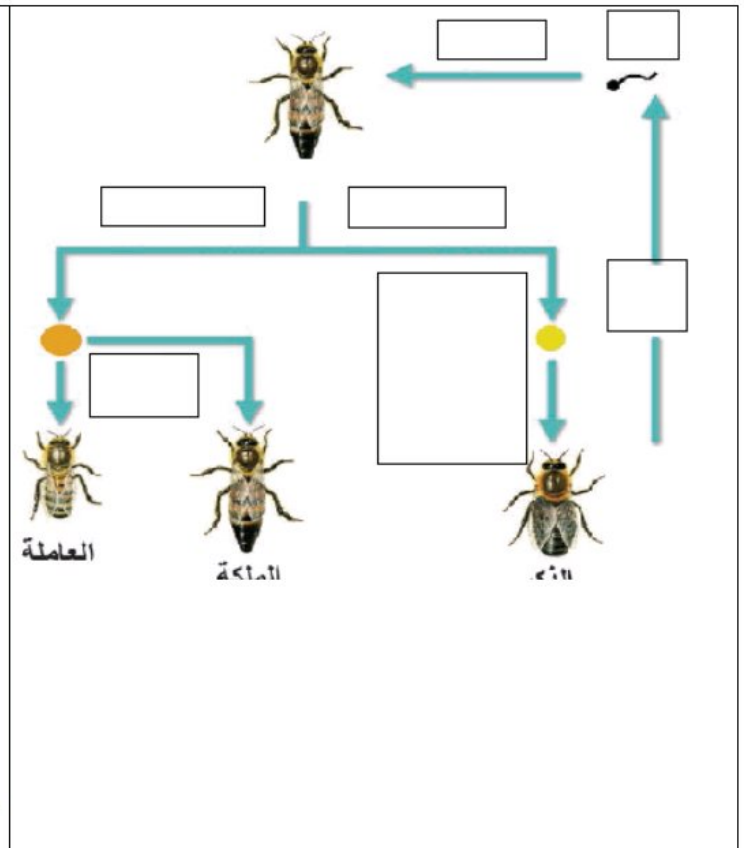
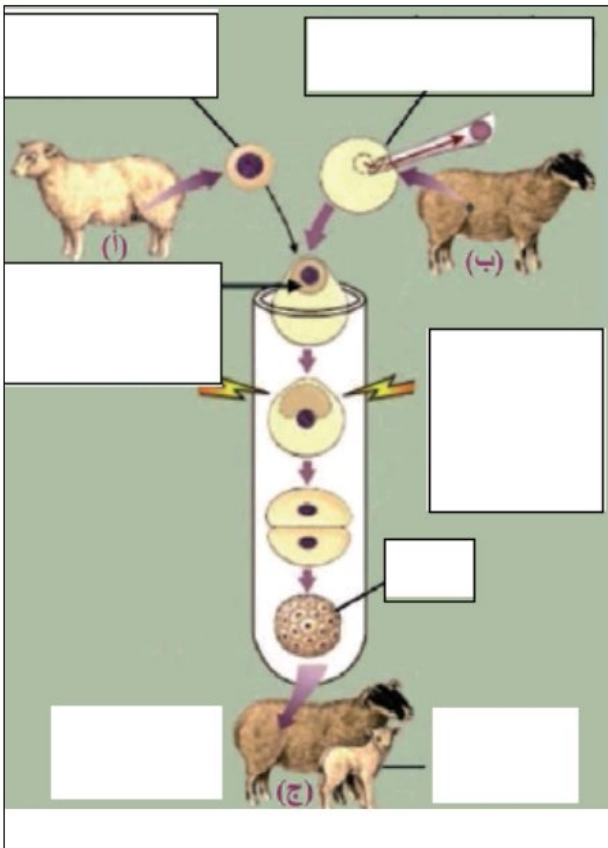
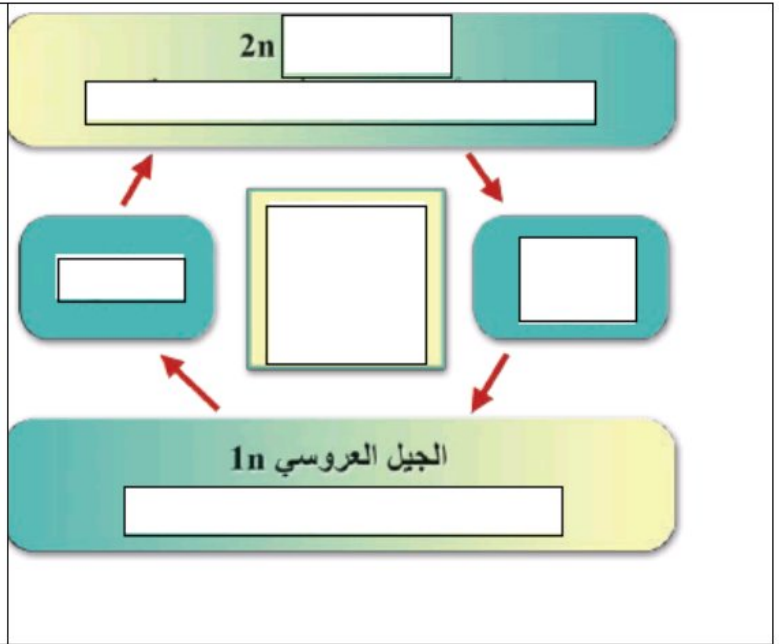
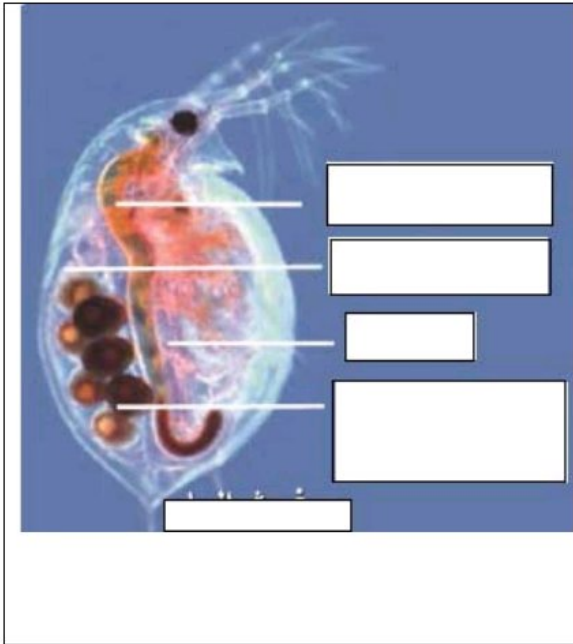
الاجذاب الأرضي للمساق والجذر

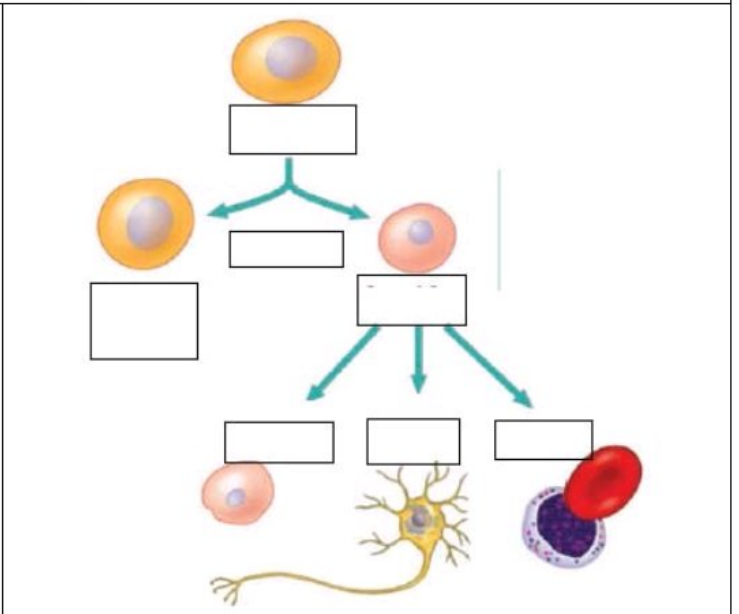
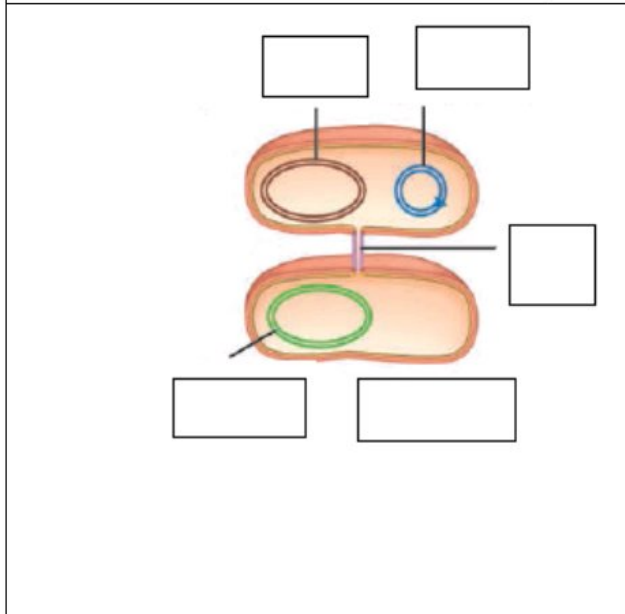
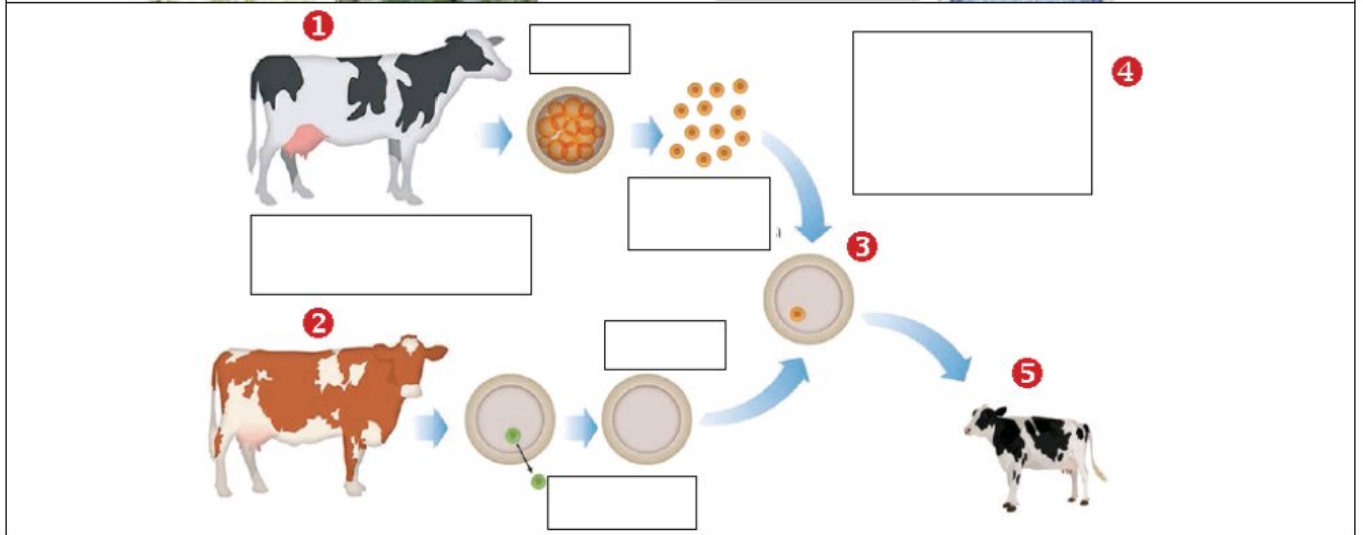
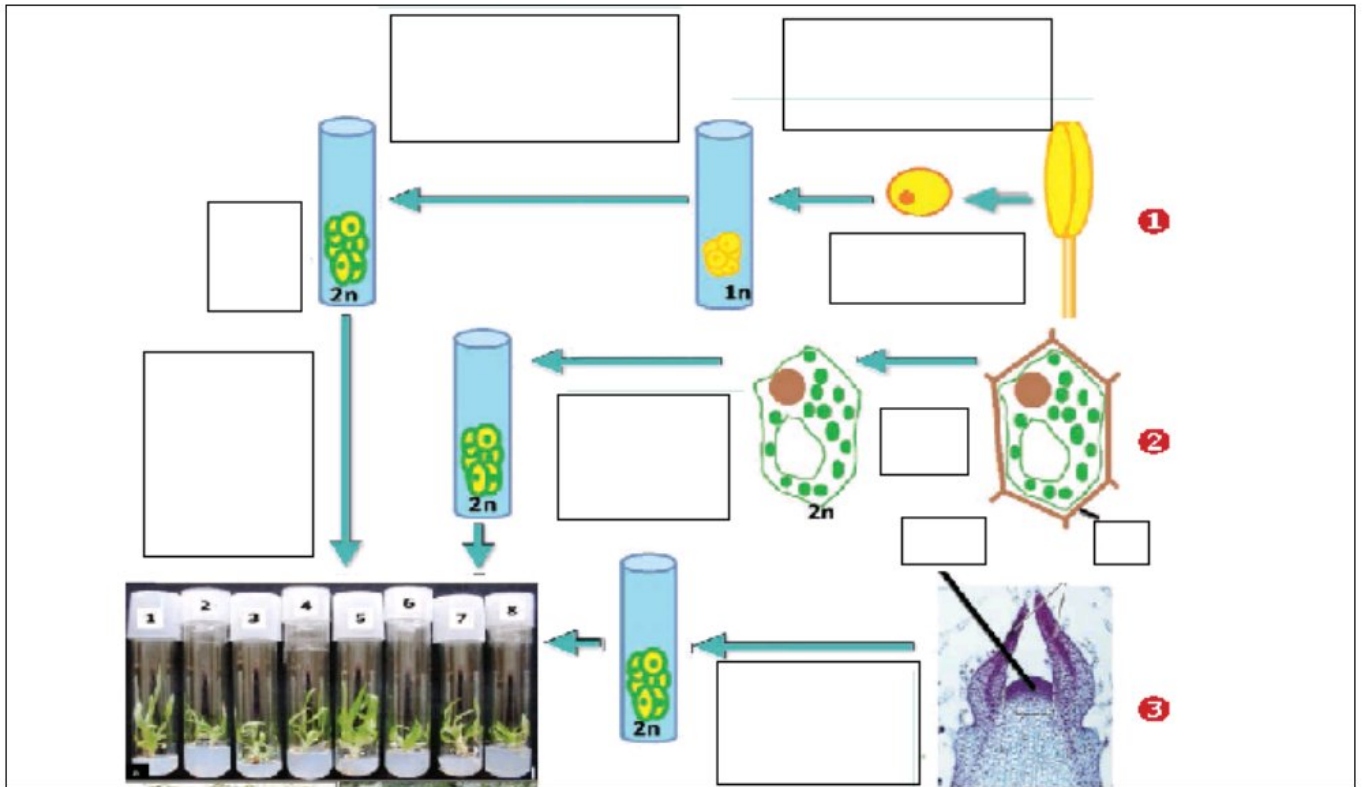


الاجذاب الأرضي في النبات

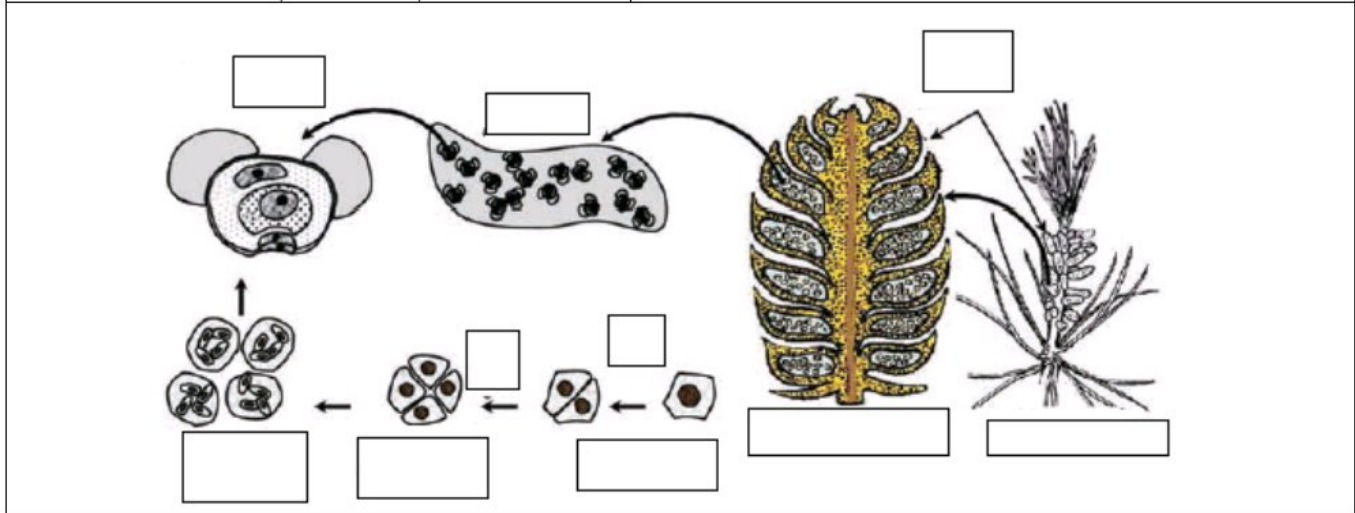
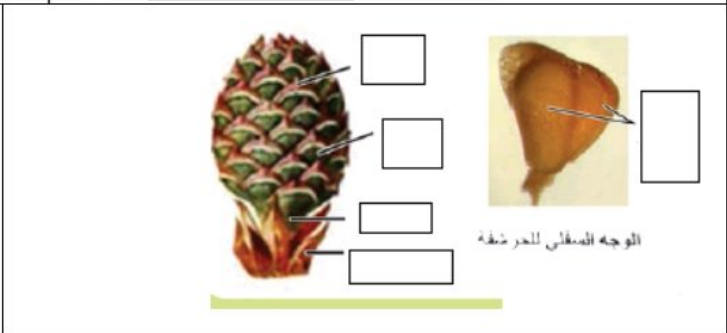
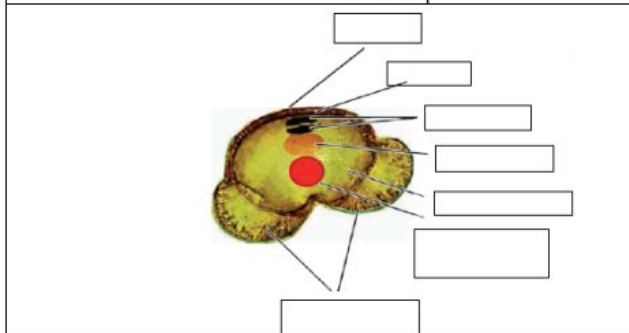
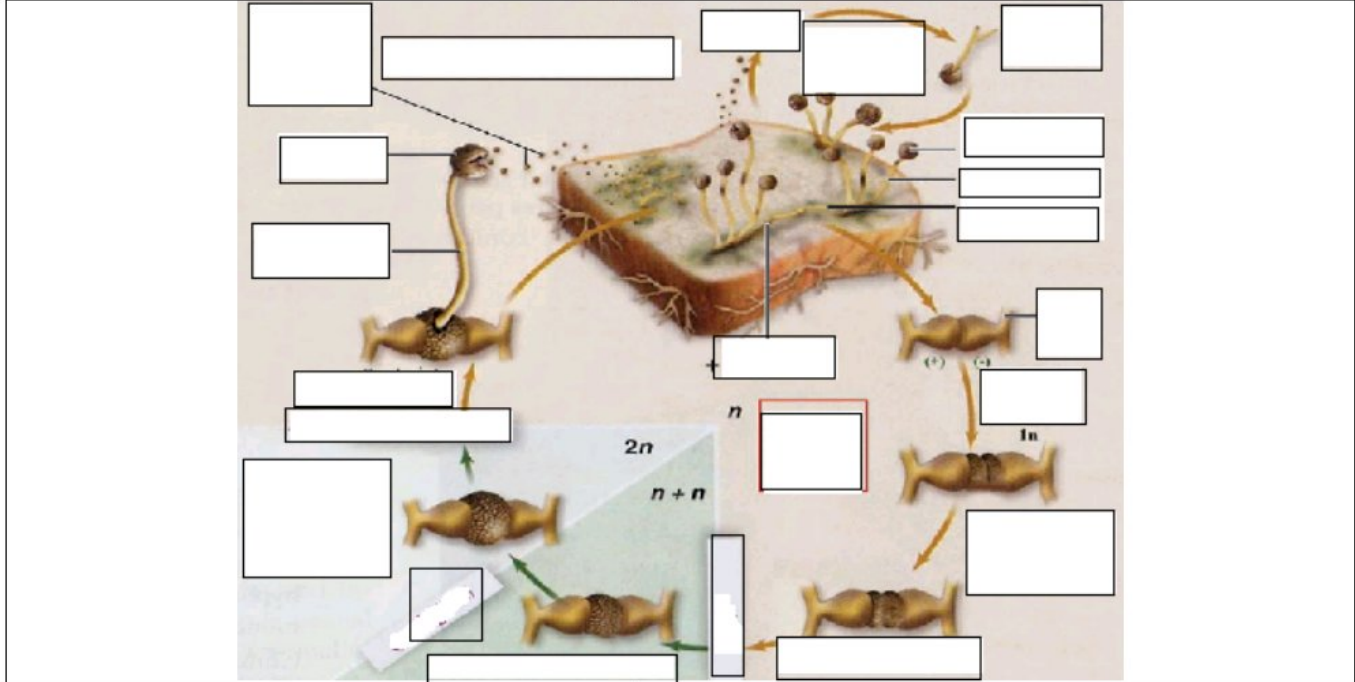
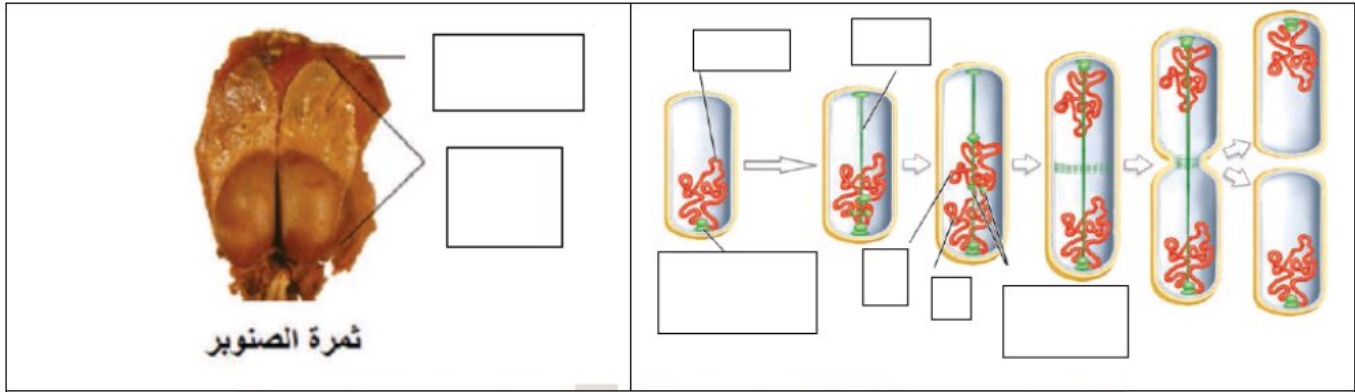




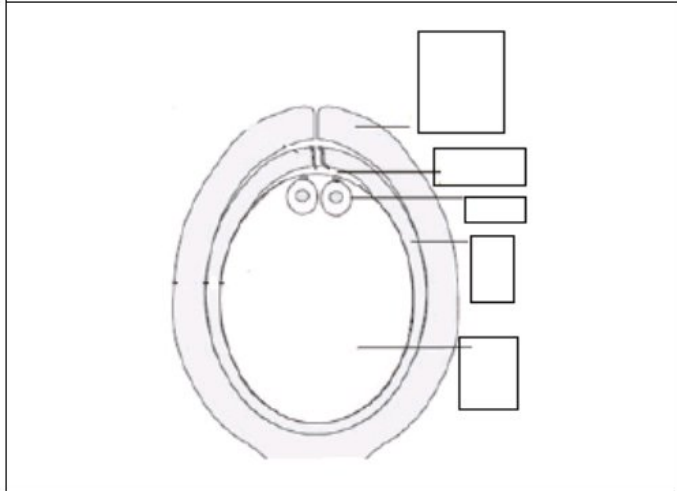
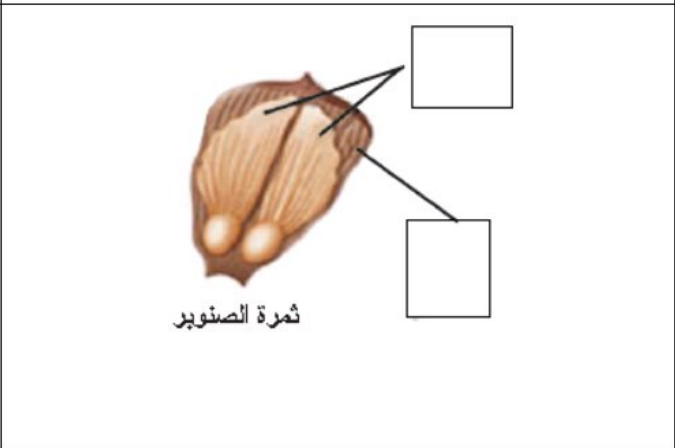
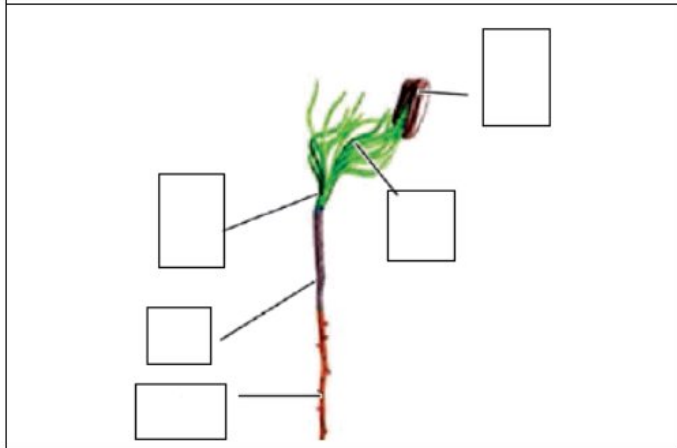
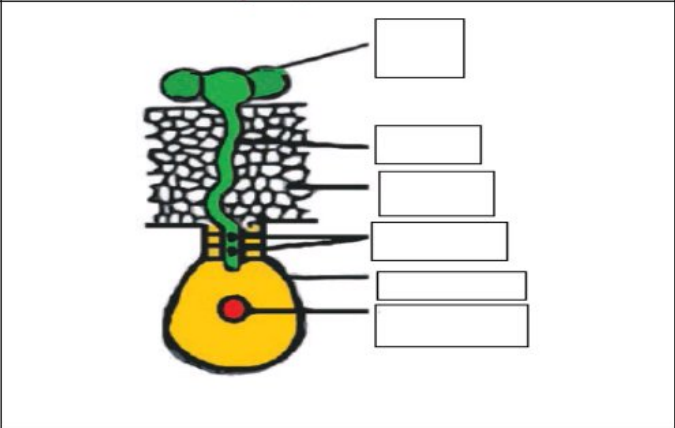
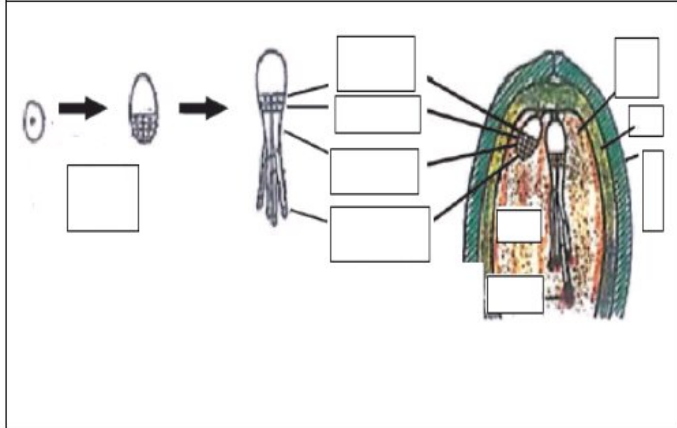
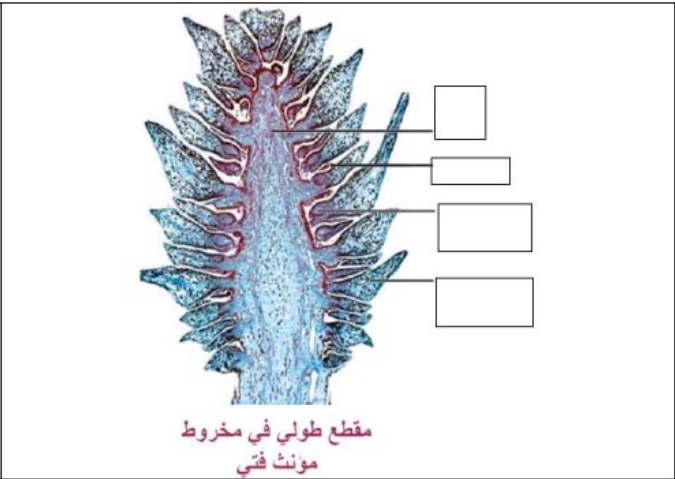
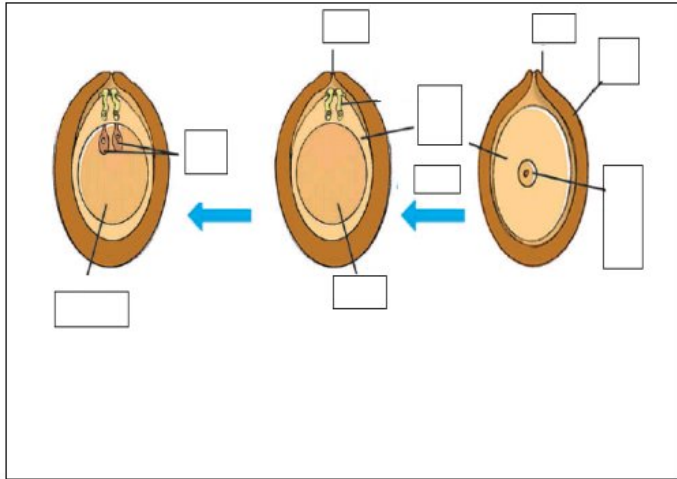


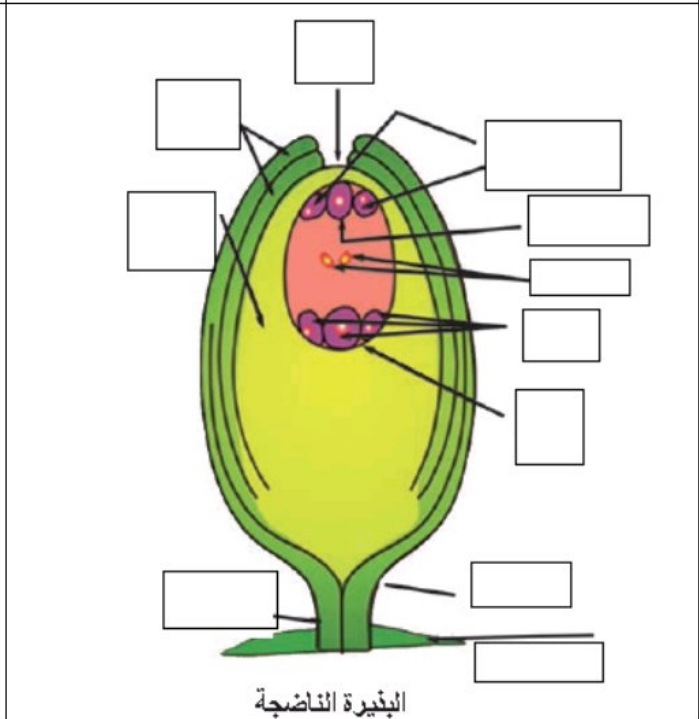
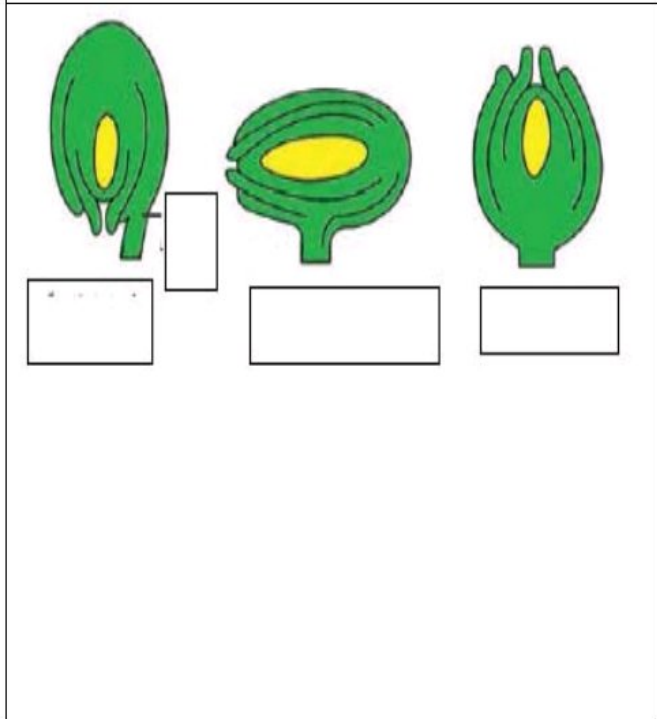
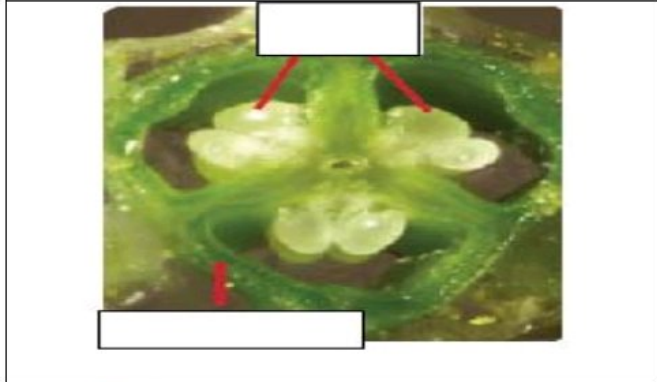
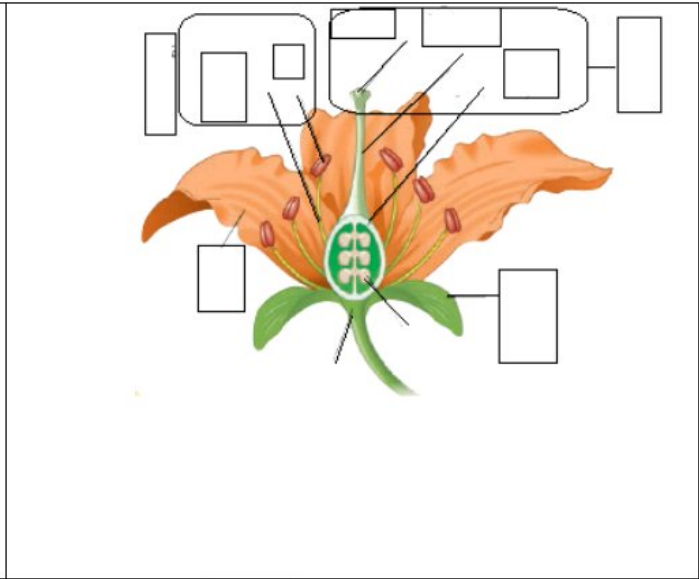
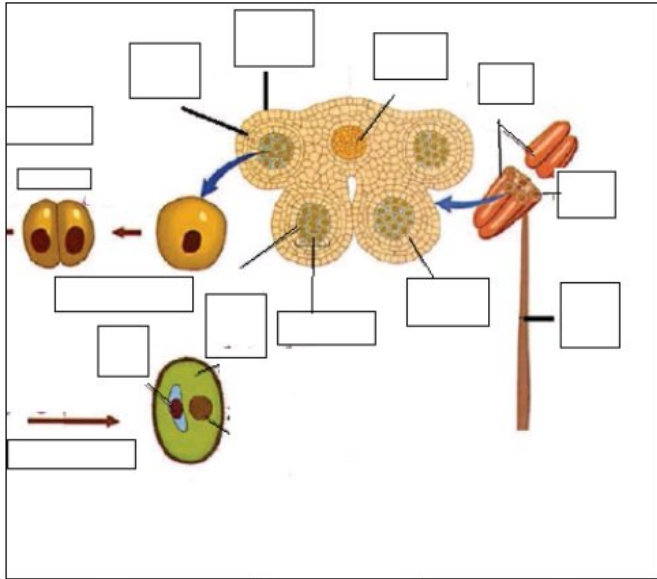


R.M: إعداد

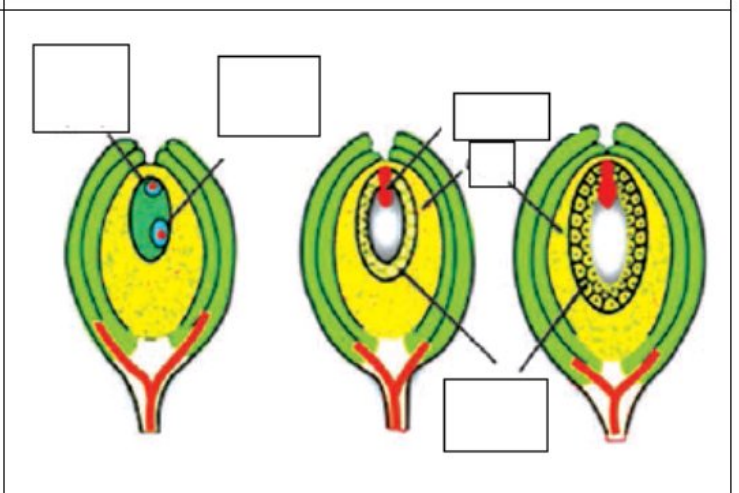
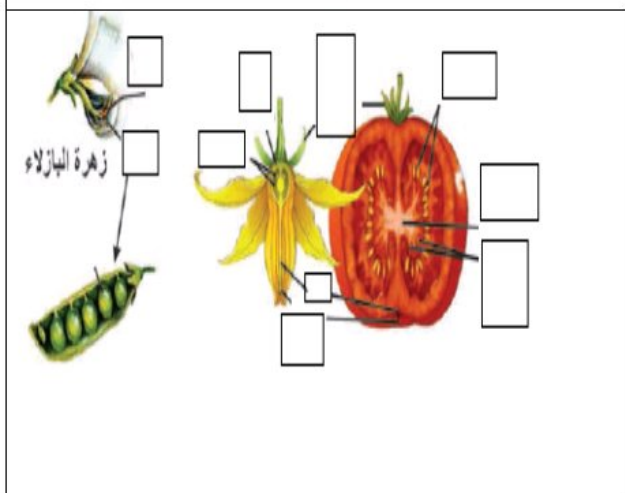
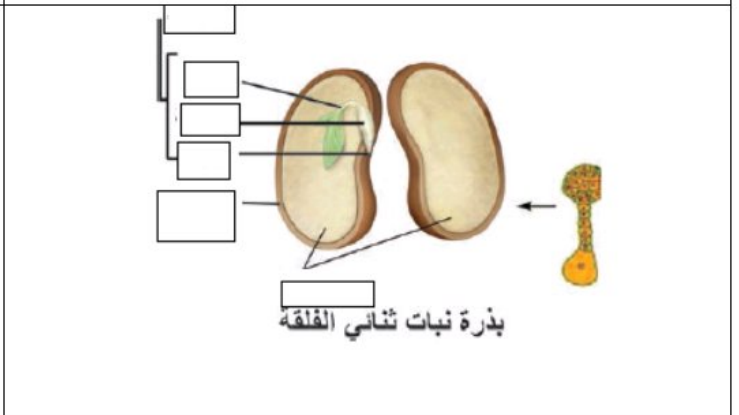
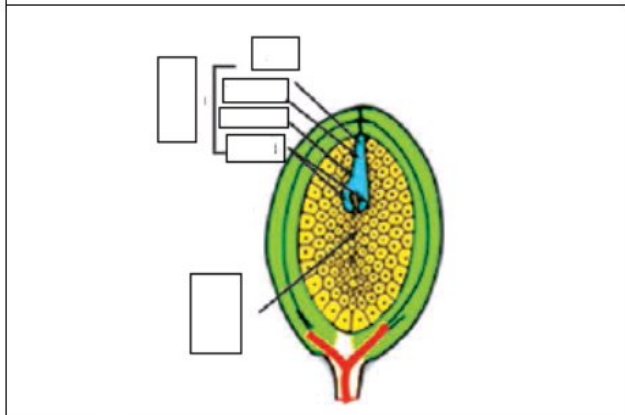
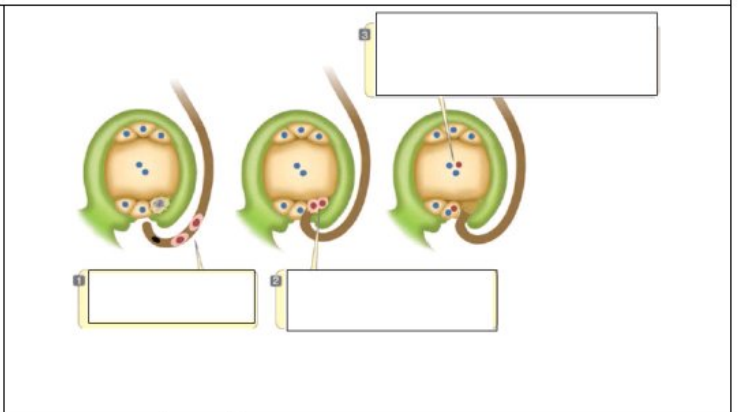
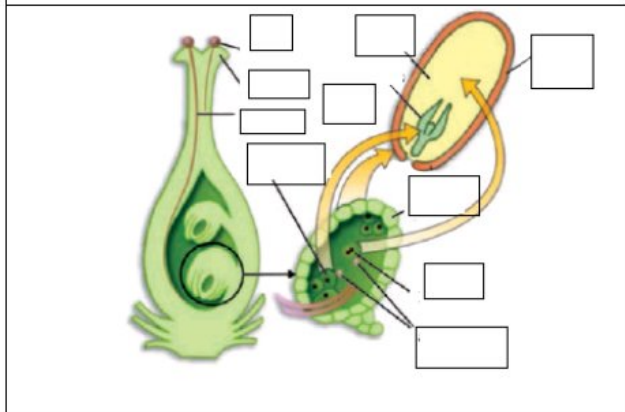
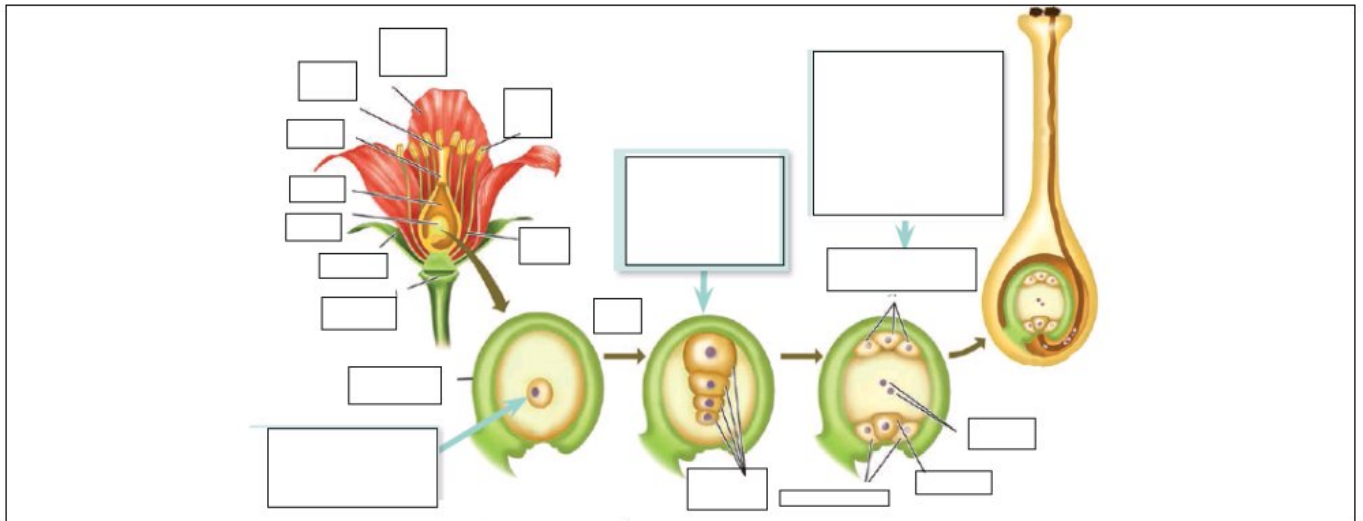


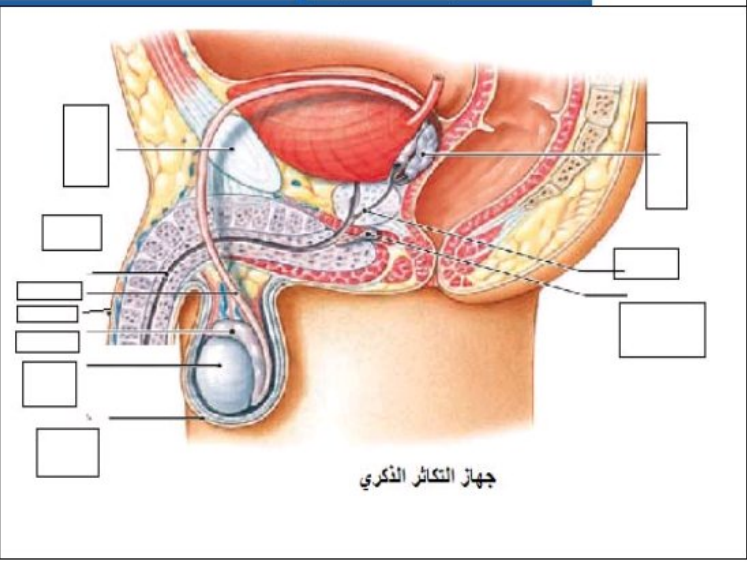
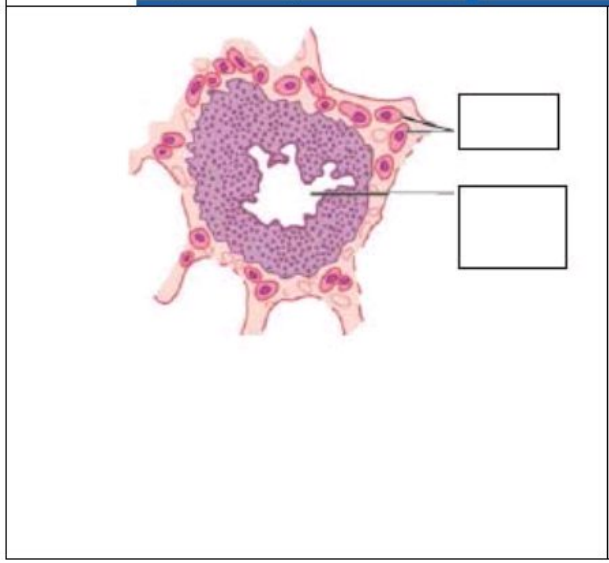
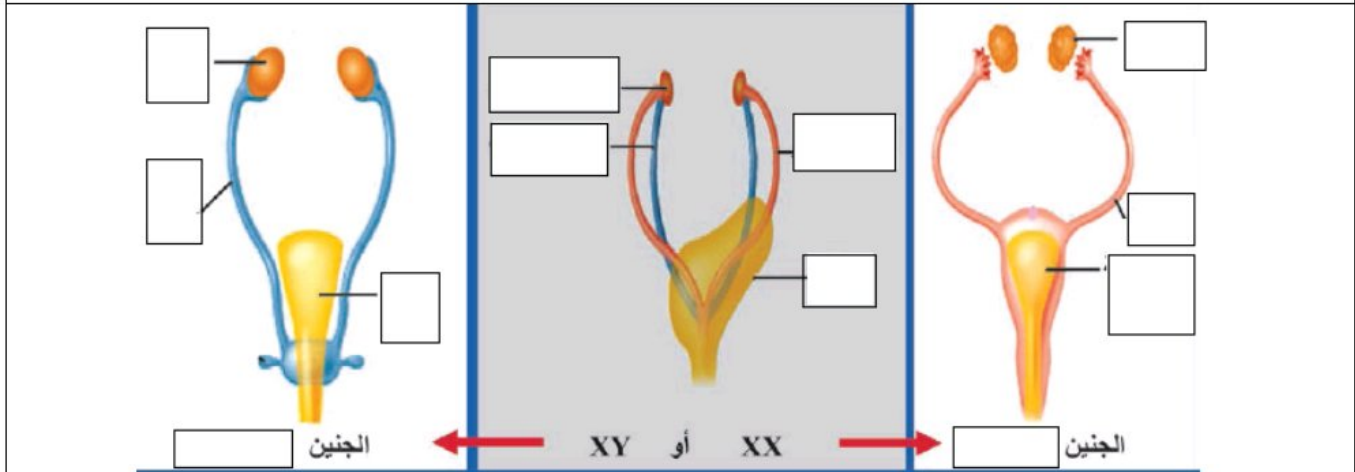
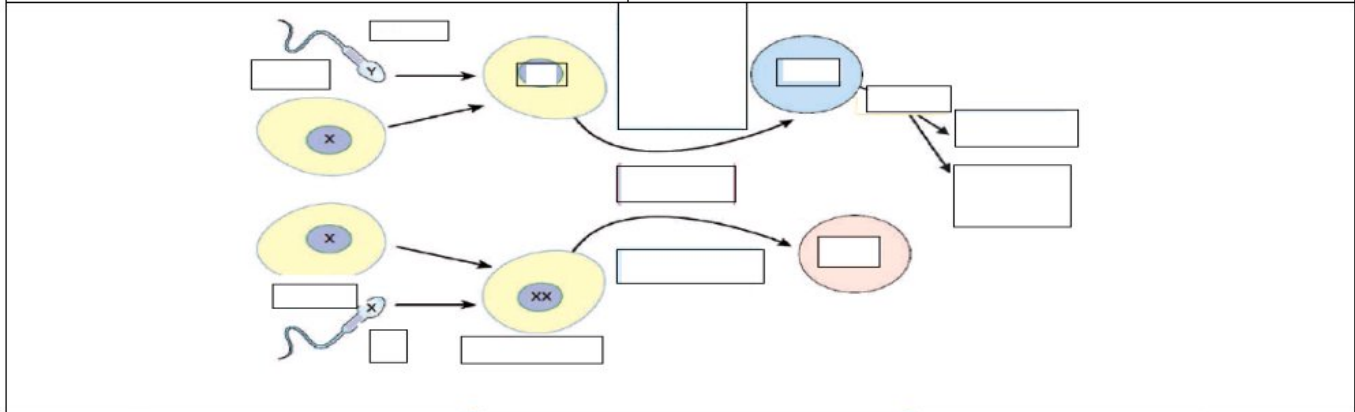
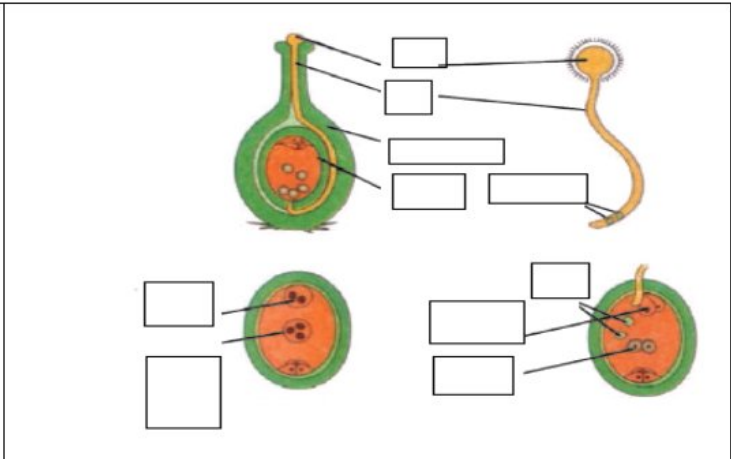
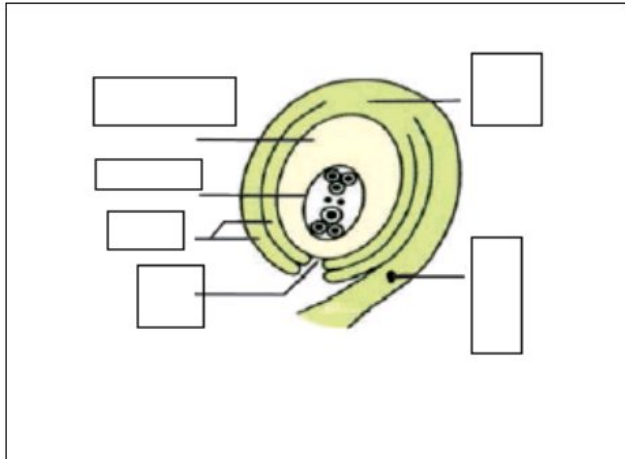
R.M: إعداد

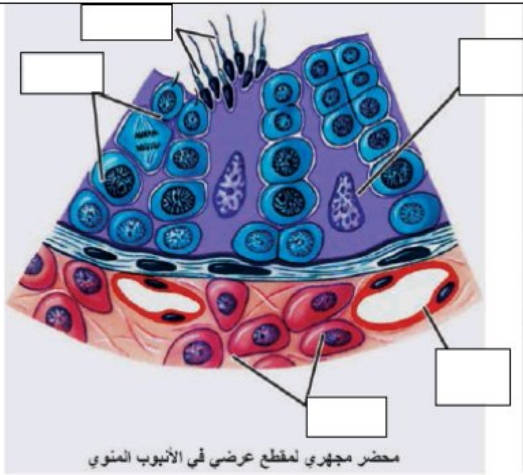




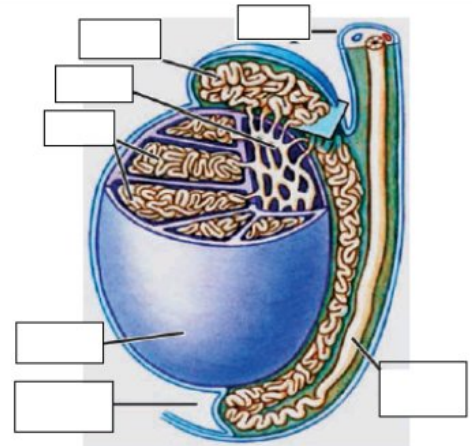
البيضة الناضجة



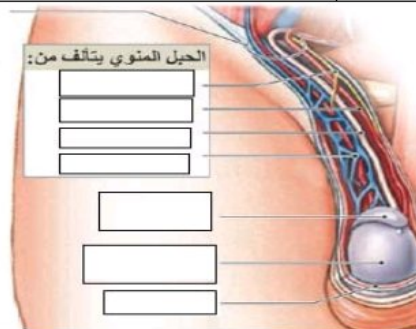




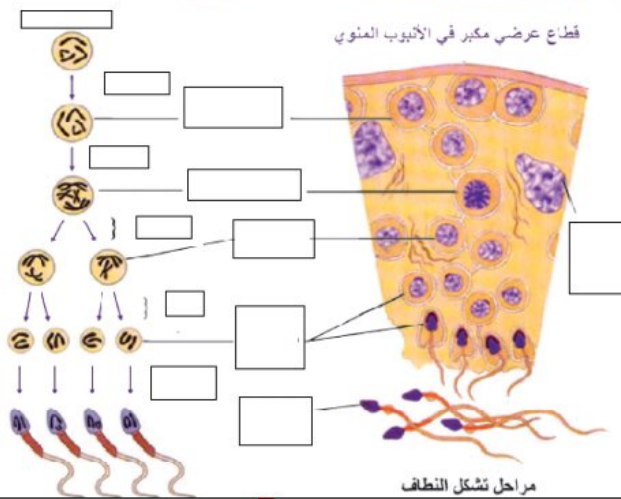
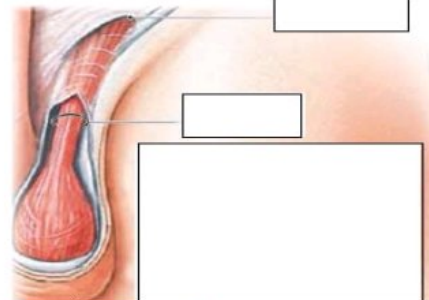
محضر مجهري لمقطع عرضي في الأنبوب المنوي



رسم تخطيطي لمقطع في الخصية

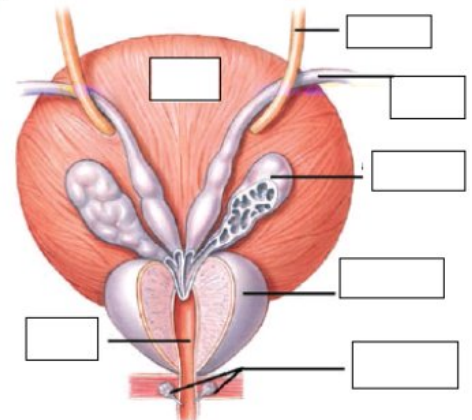


الحبل المنوي يتألف من:

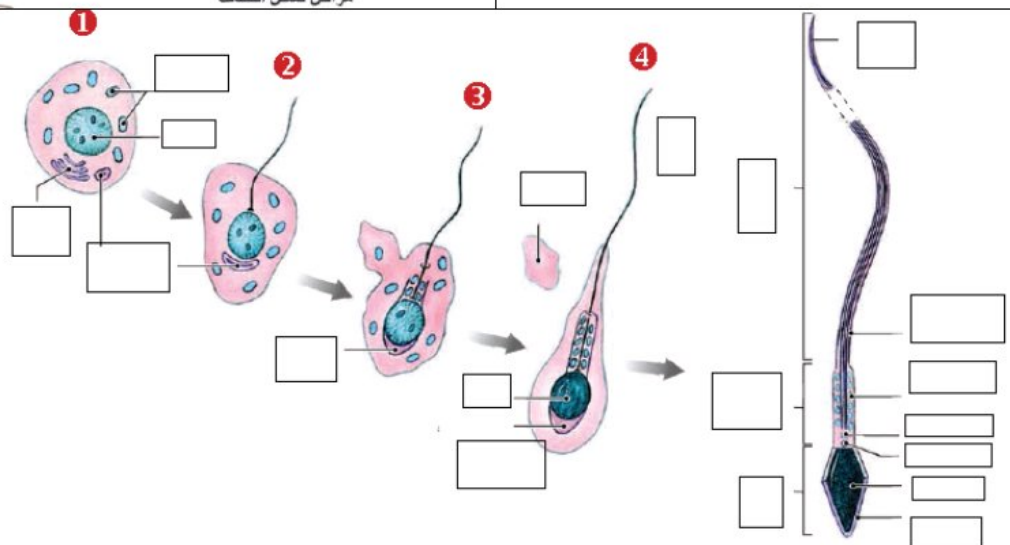


قطاع عرضي مكبر في الأنبوب المنوي

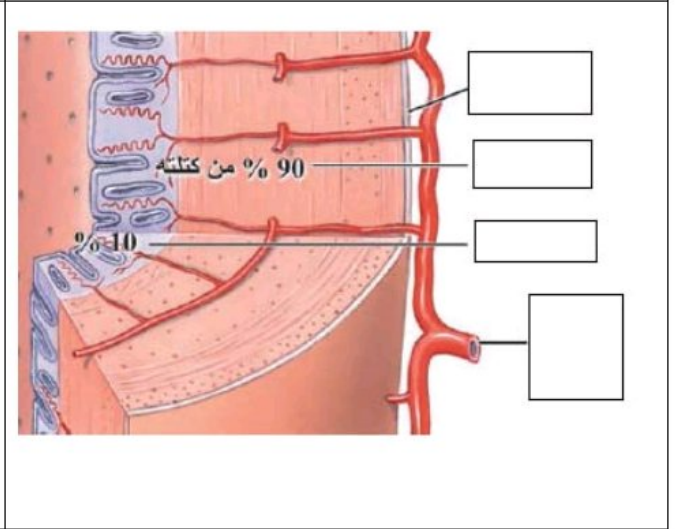
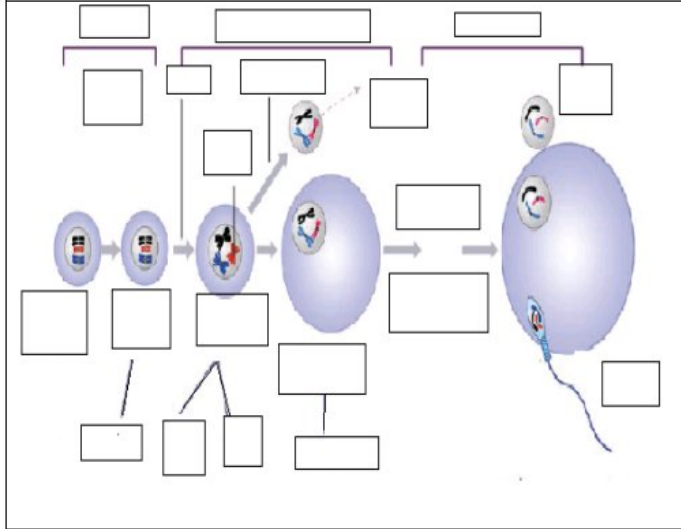
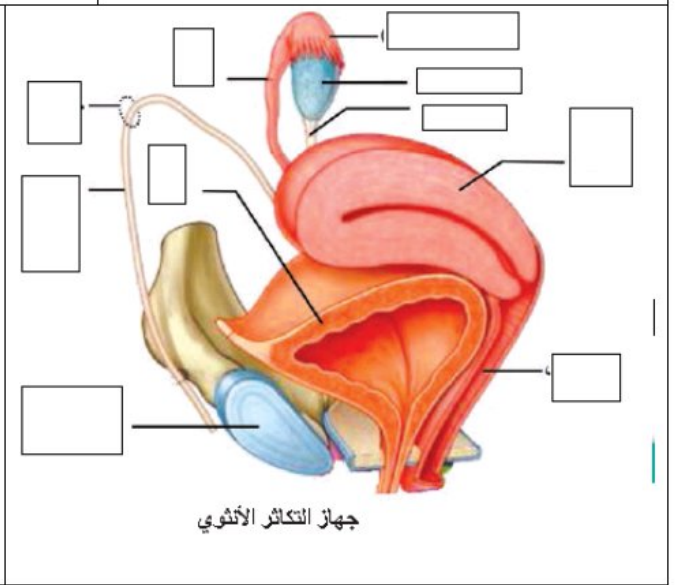
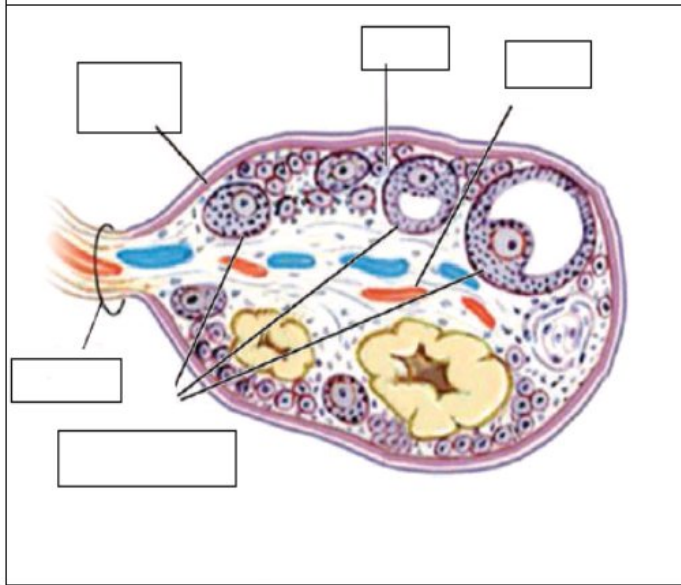
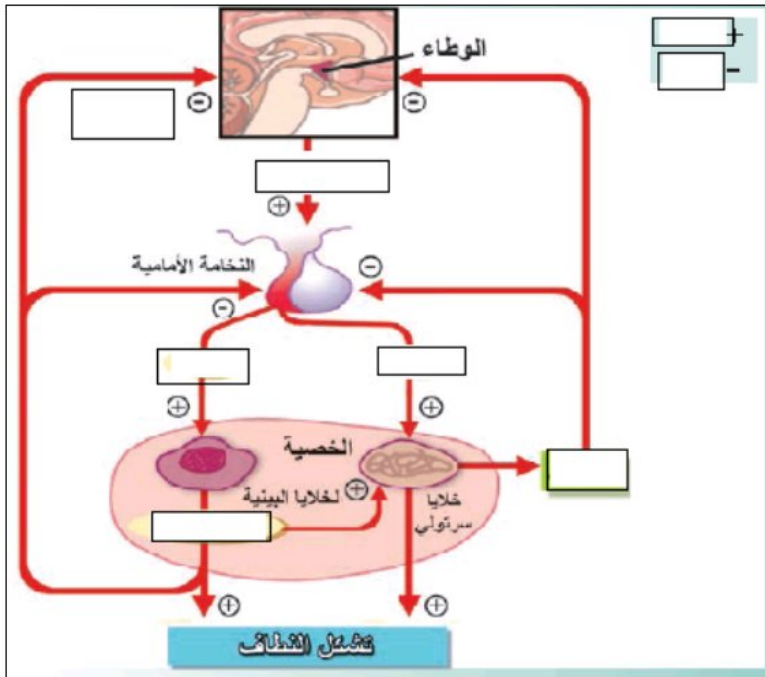
مراحل تشكل النطف

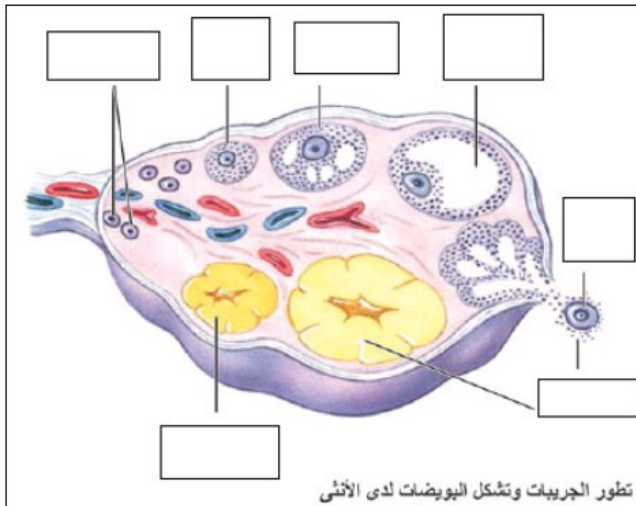


منظر خلفي للعدد الملحقة بجهاز التكاثر الذكري

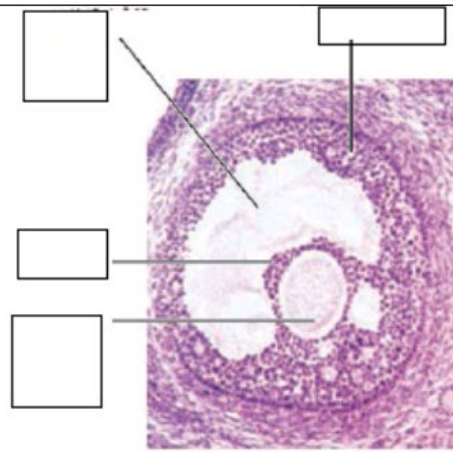


إعداد: R.M.

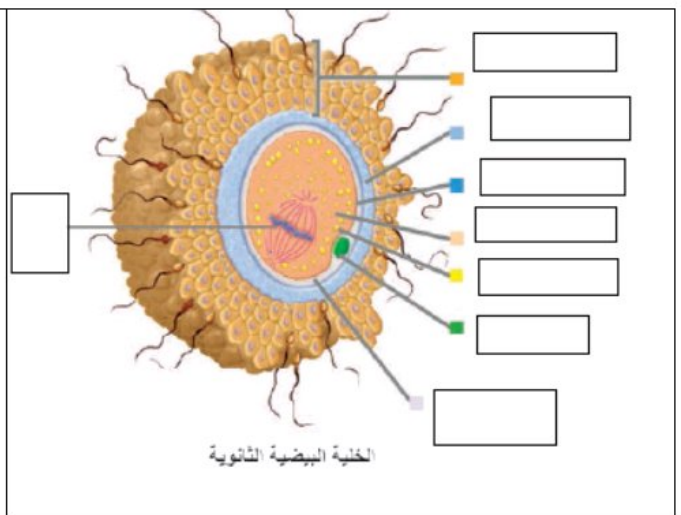
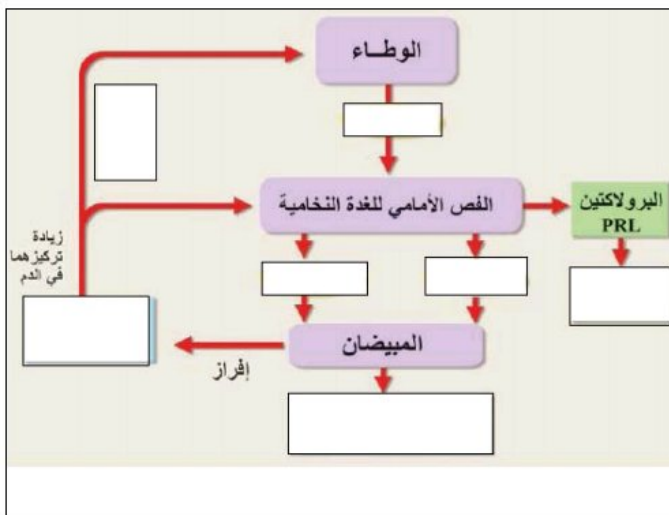
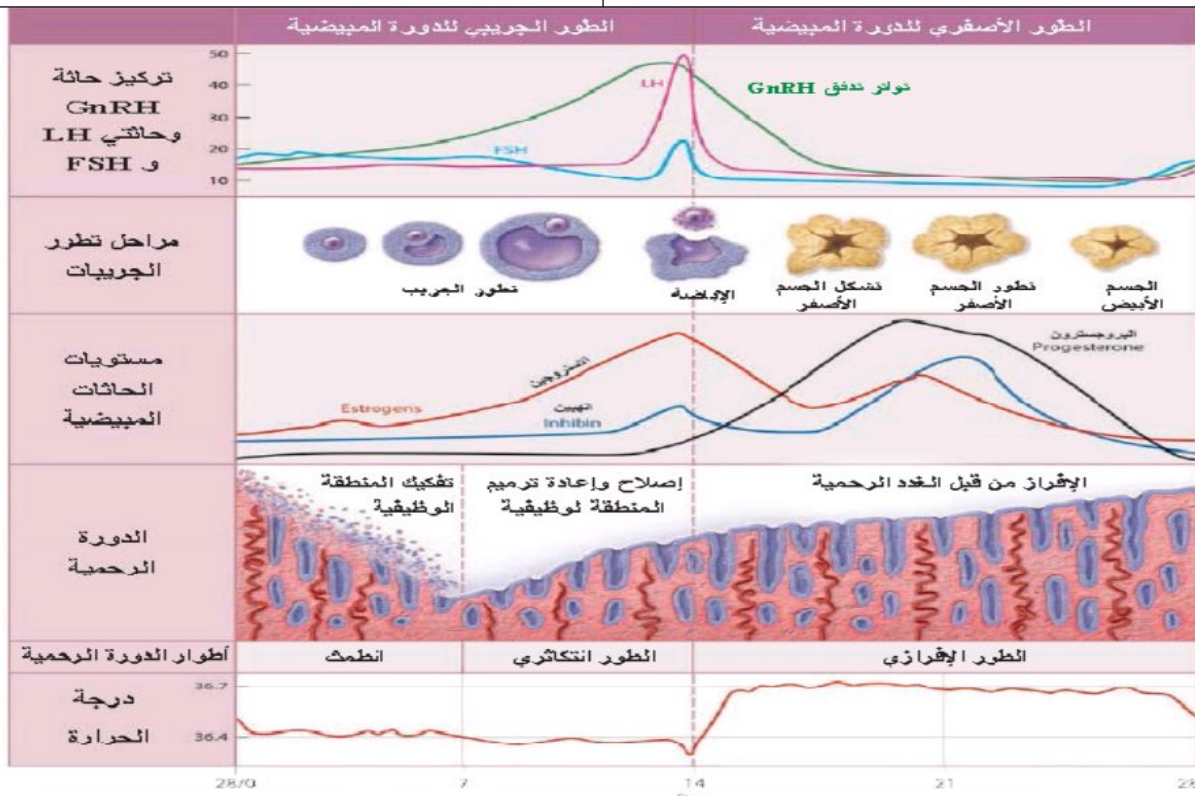




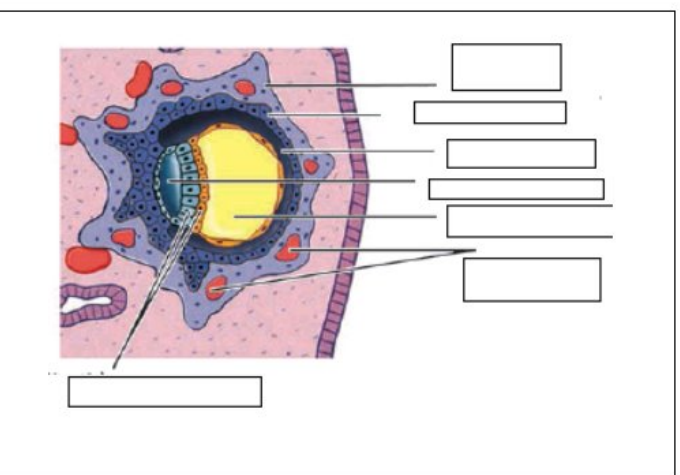
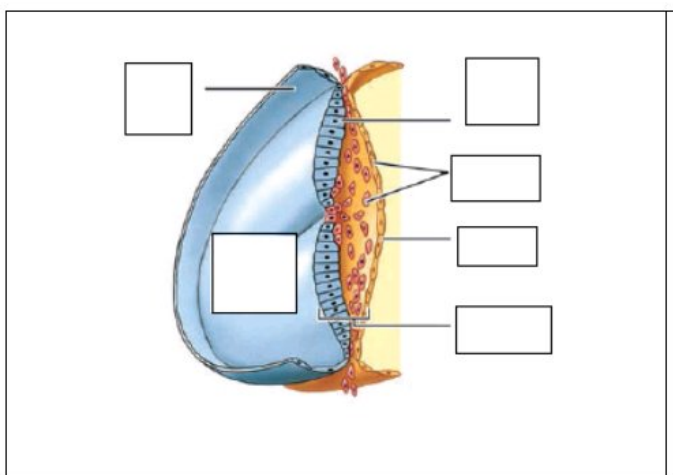
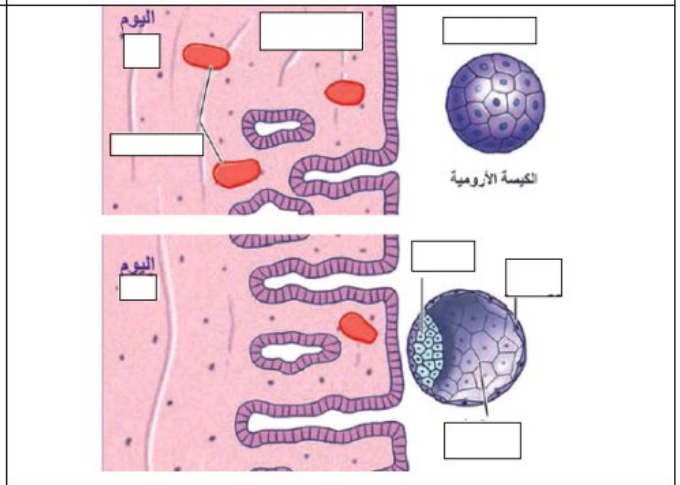
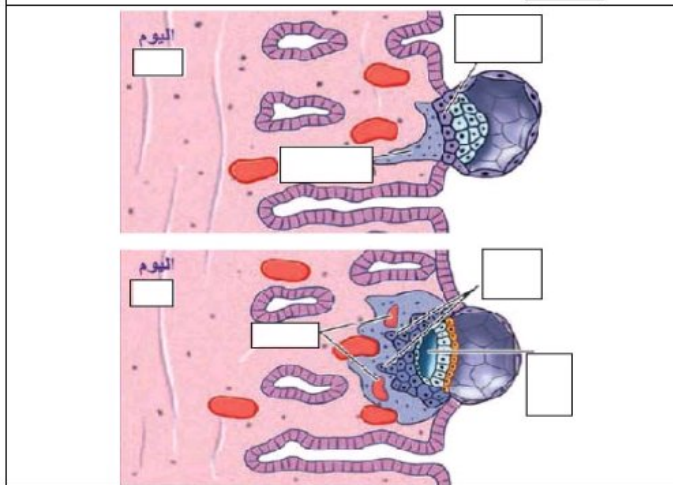
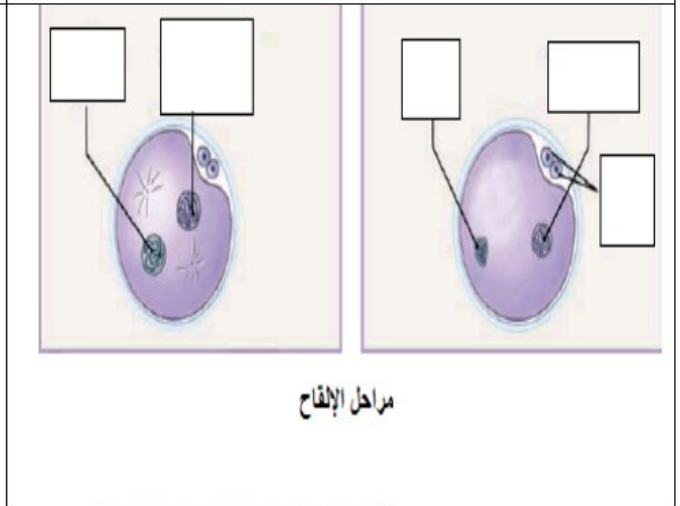
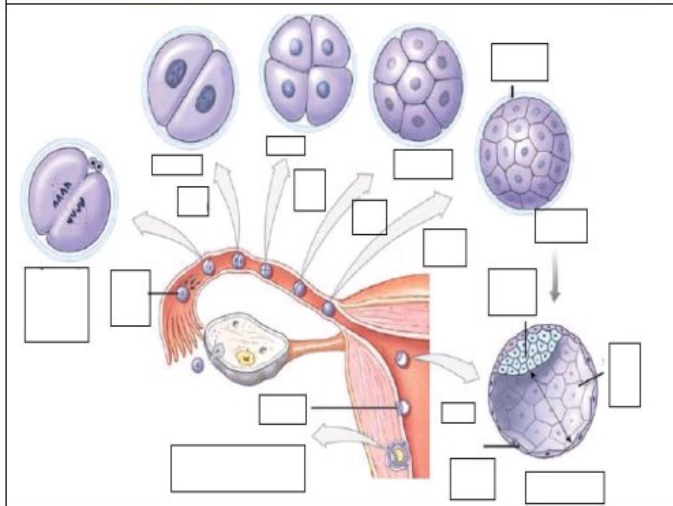
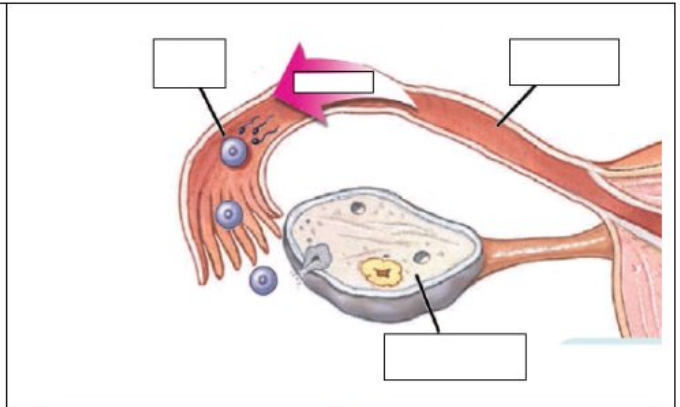
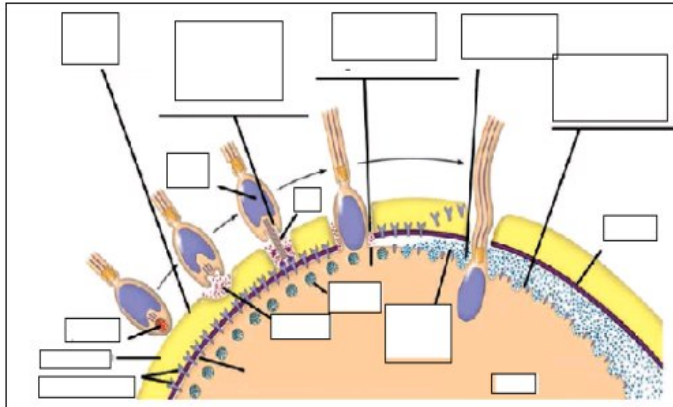
تطور الجريبات وتشكل البويضات لدى الأنثى



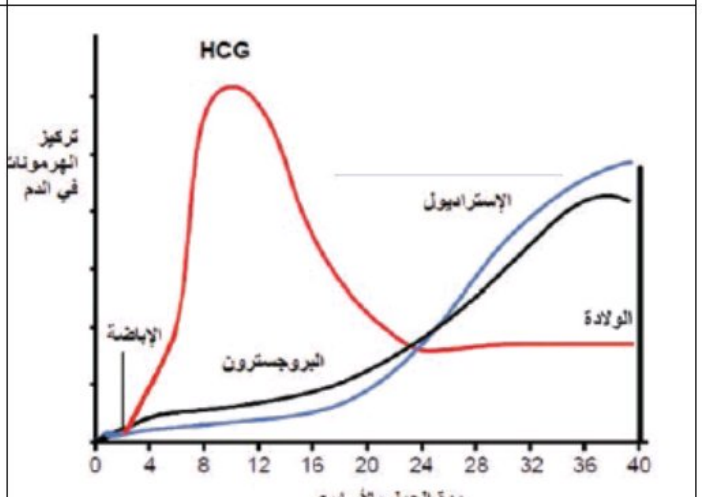
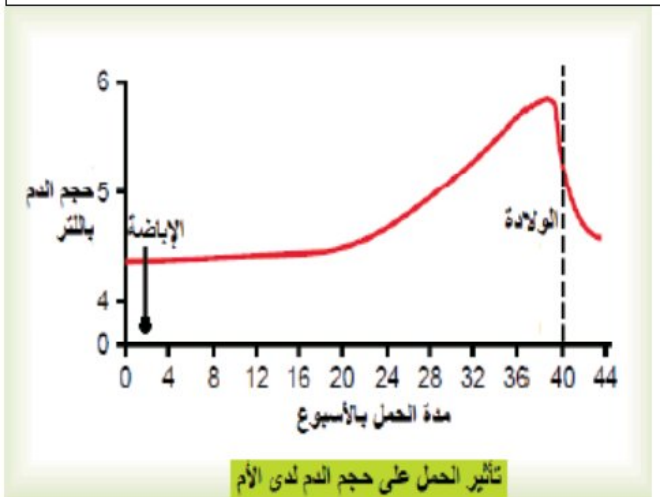
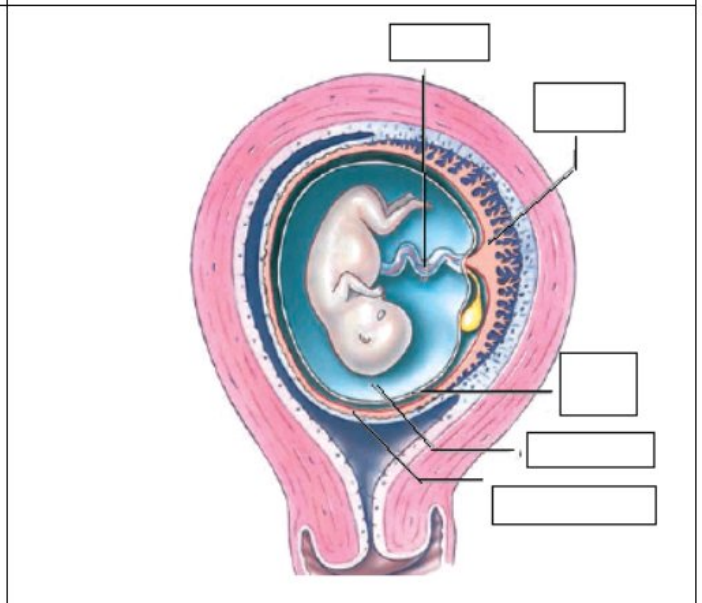
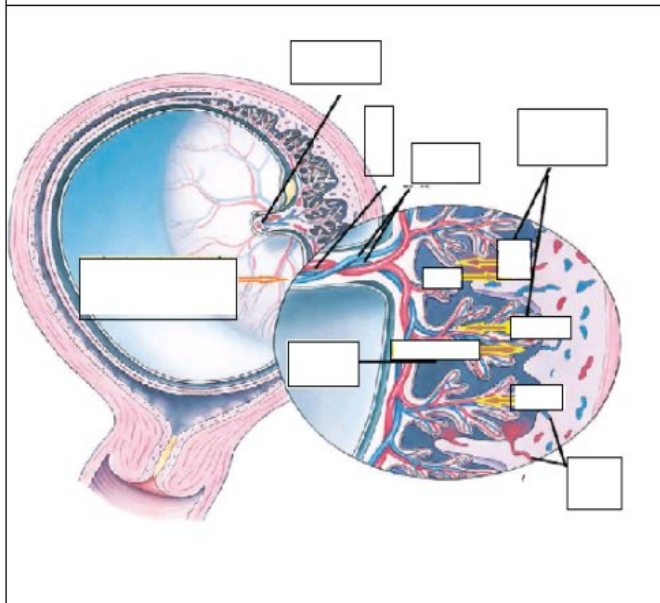
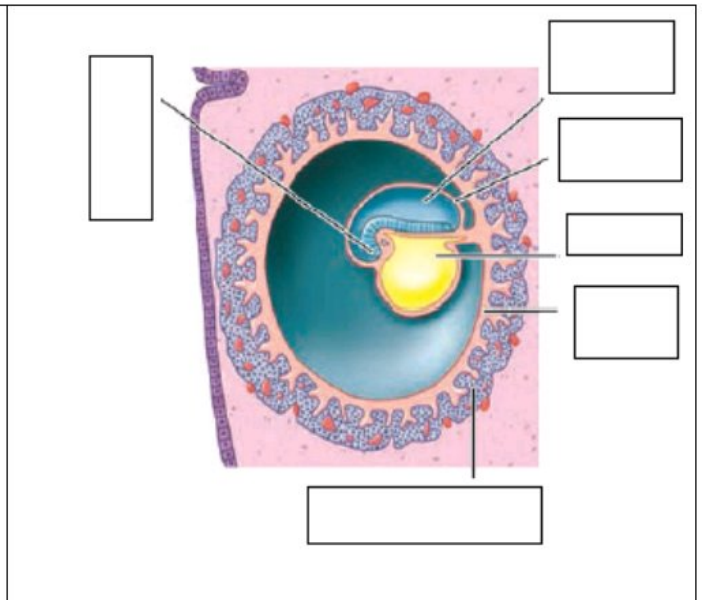
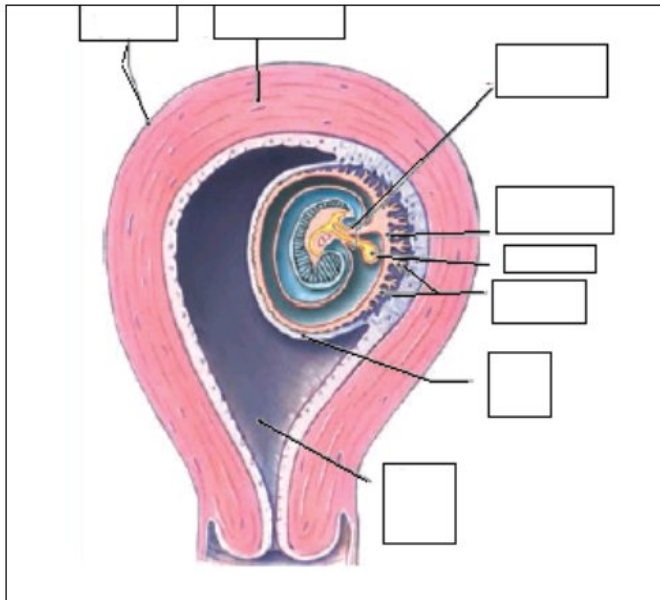
جريب ناضج

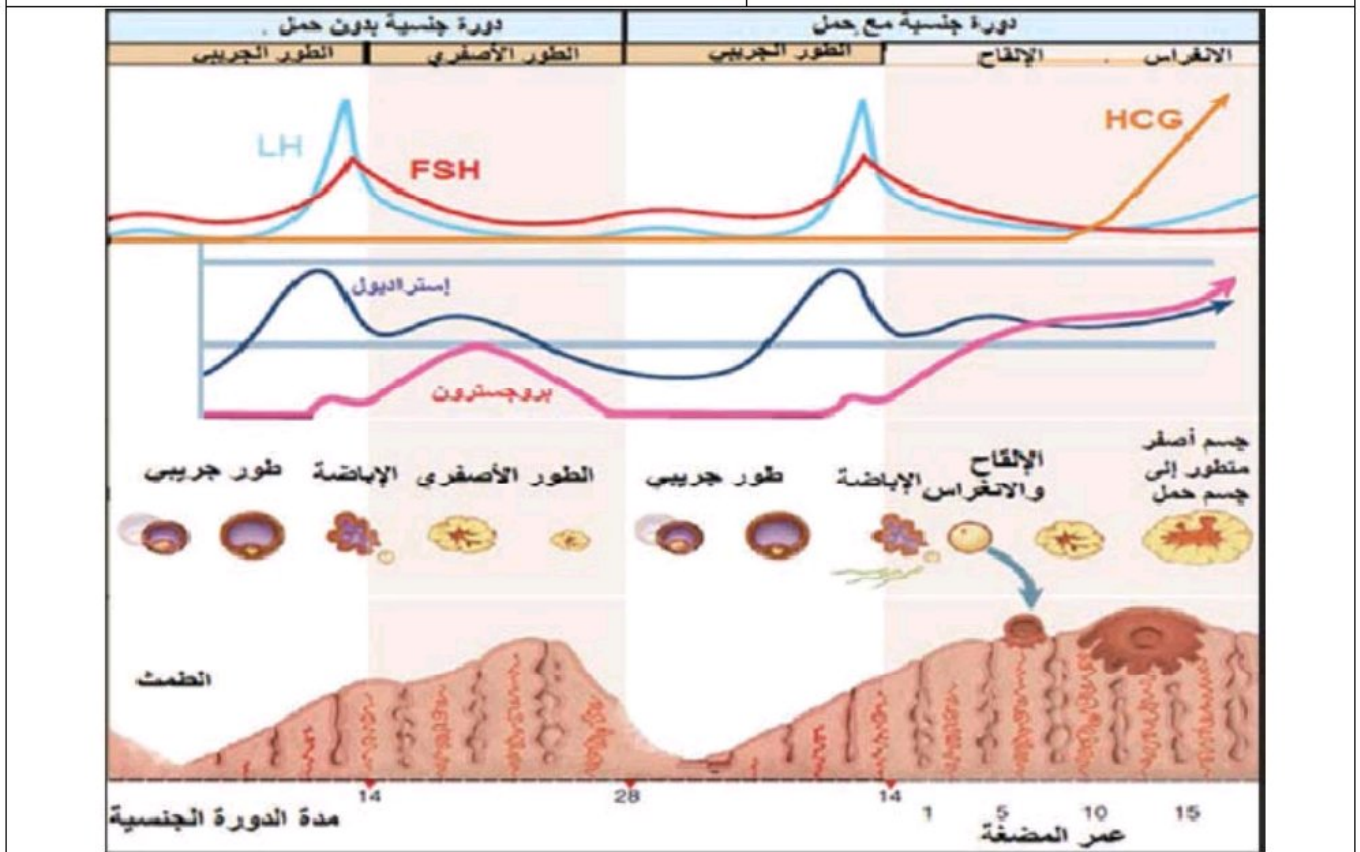
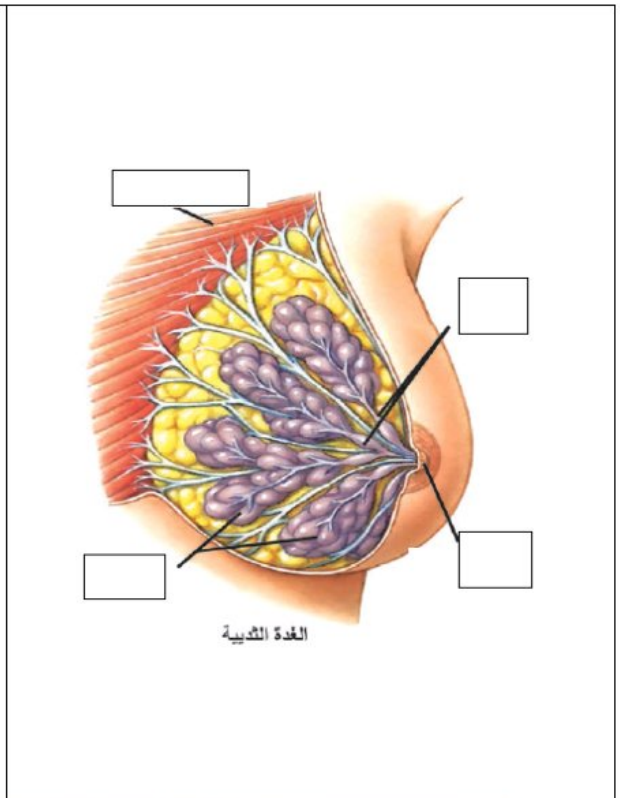
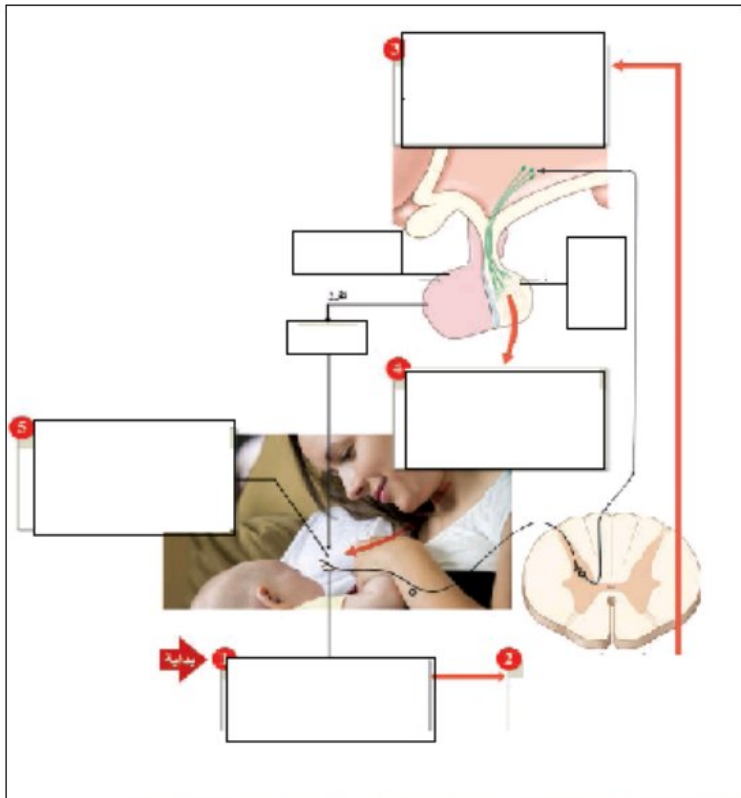


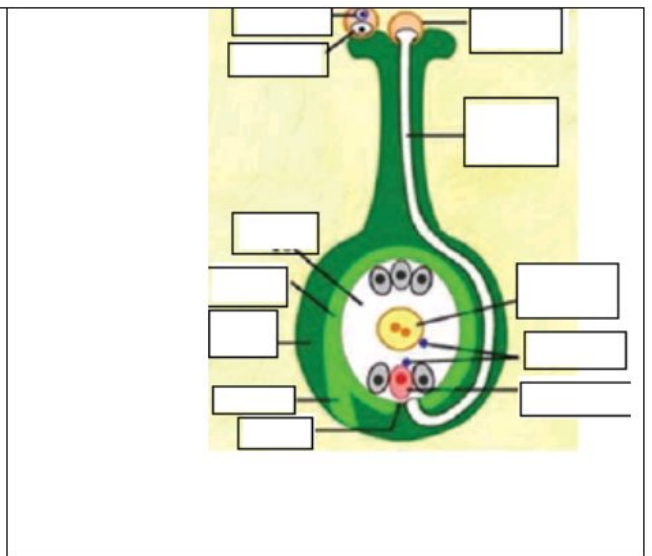
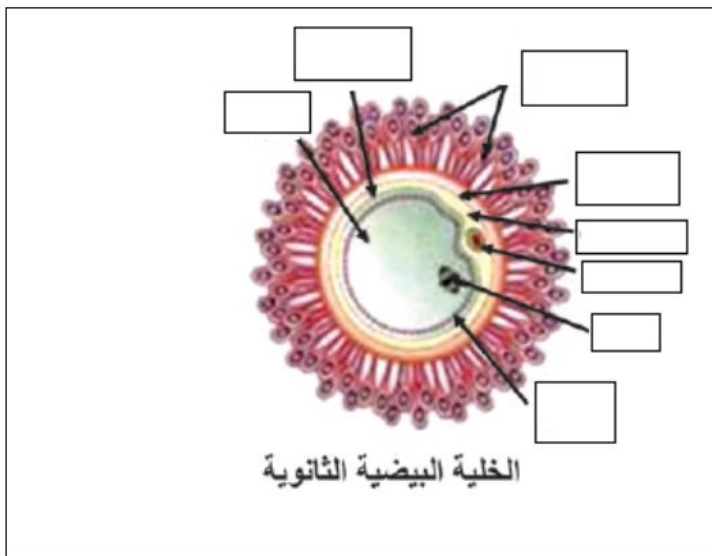
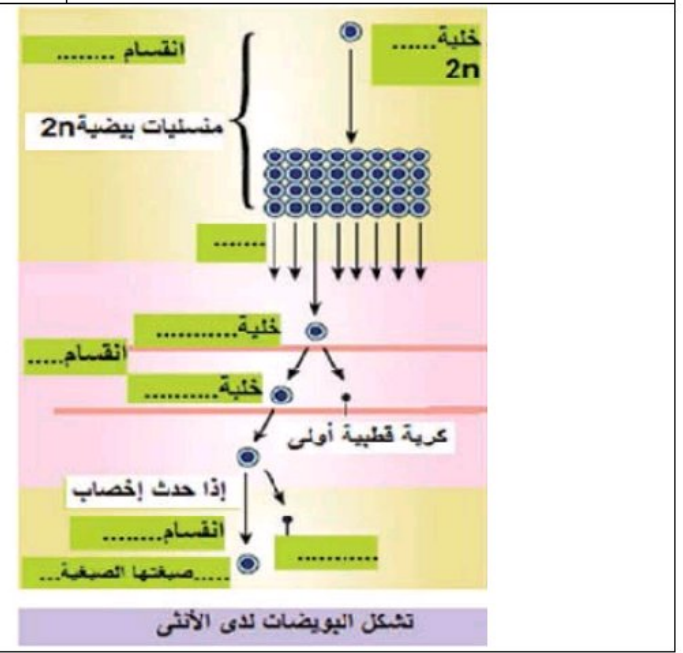
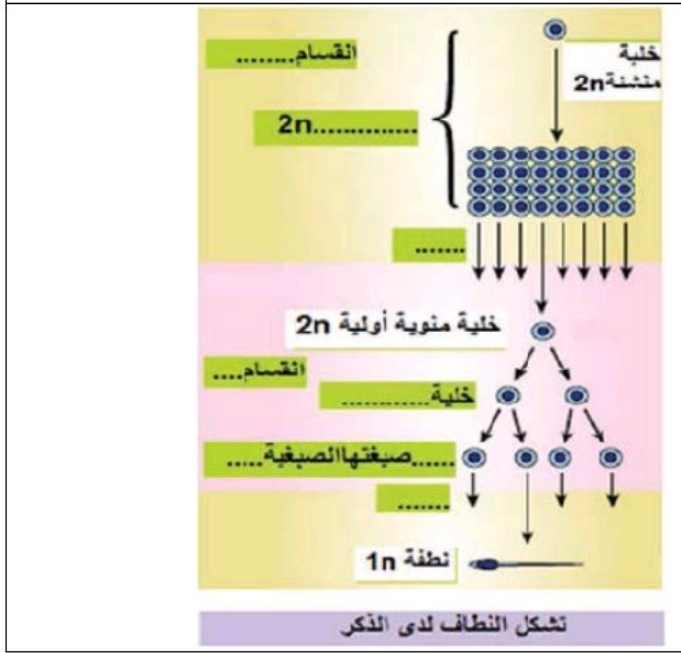
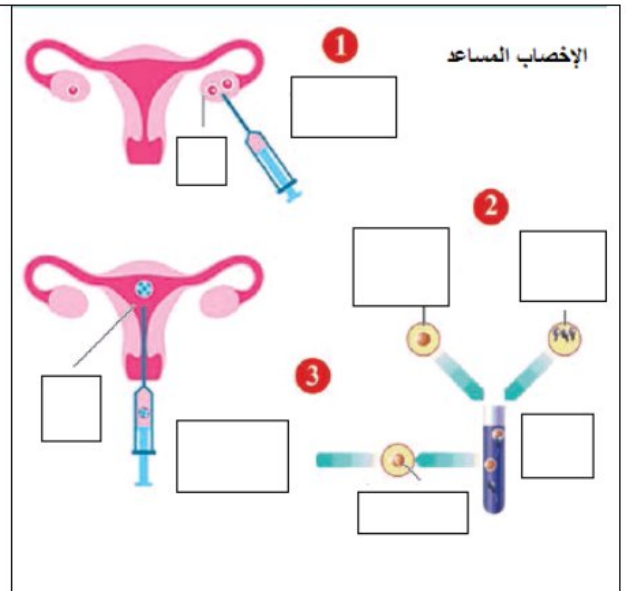
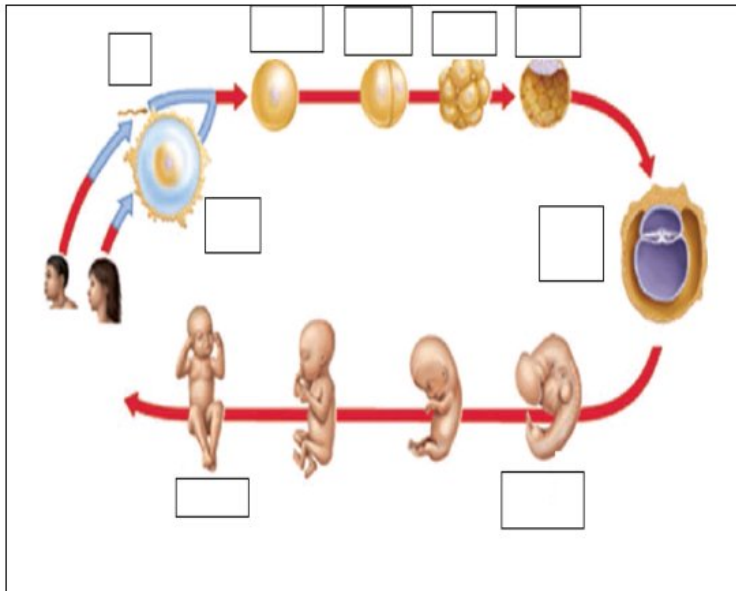
R.M: إعداد

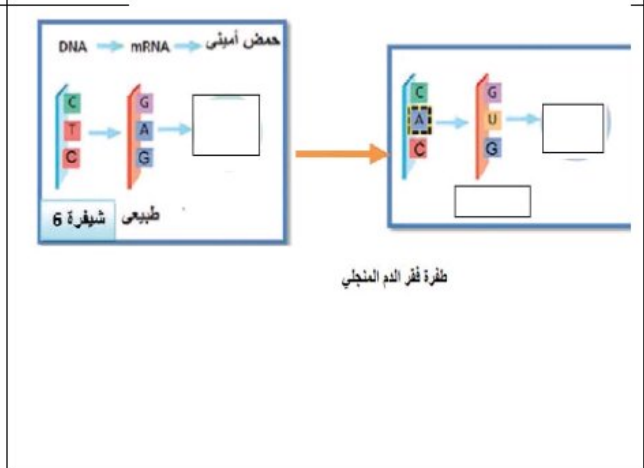
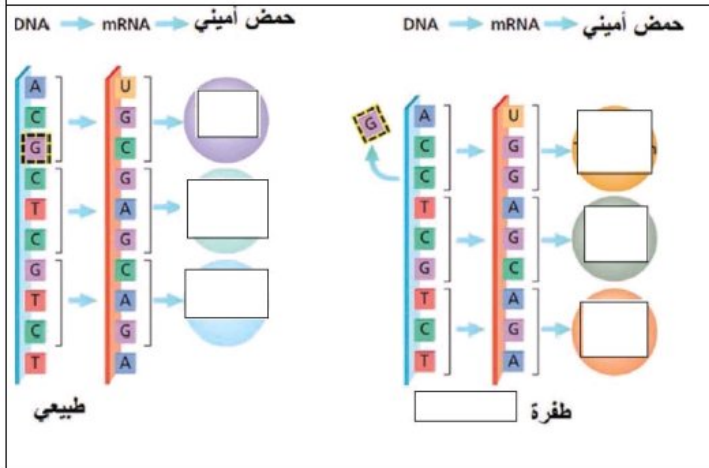
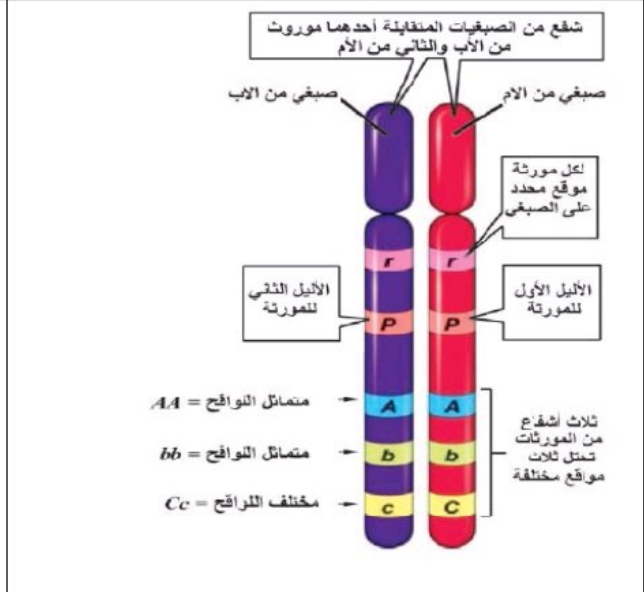
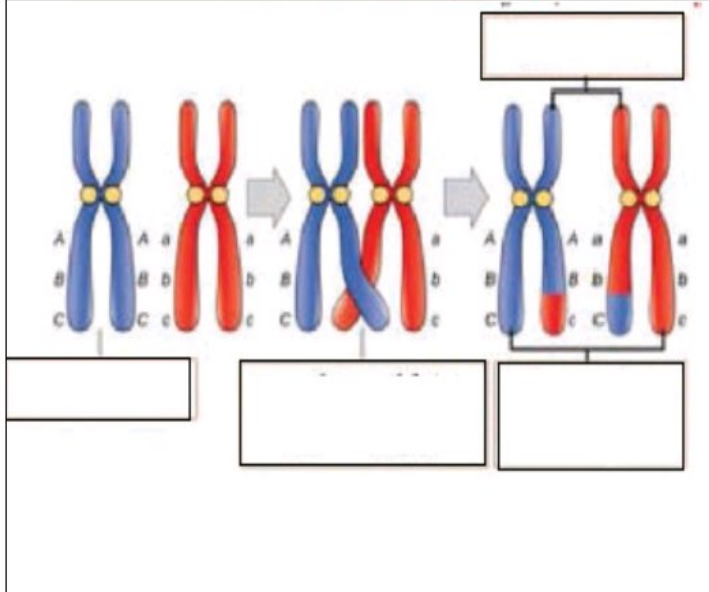
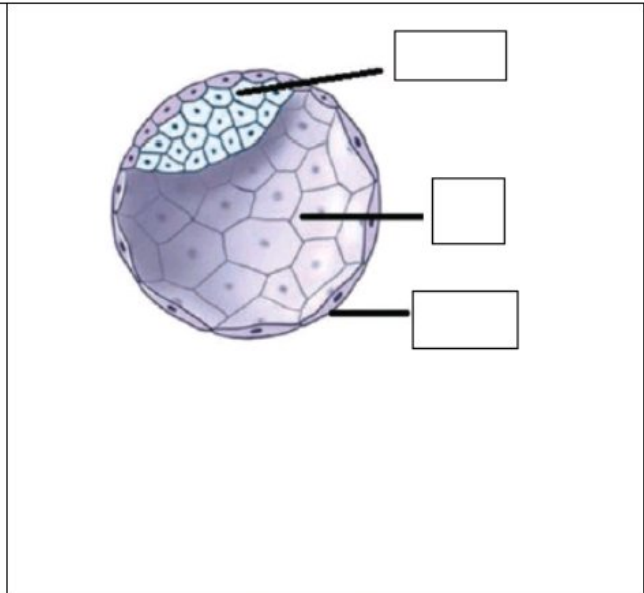
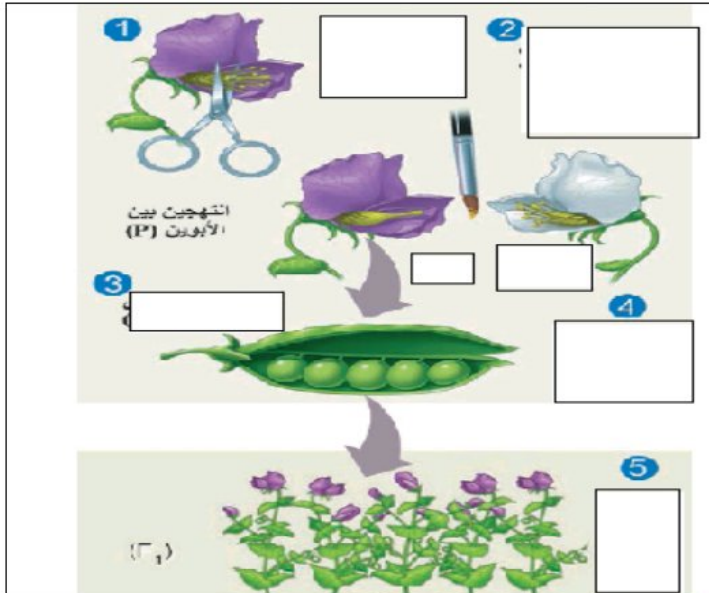


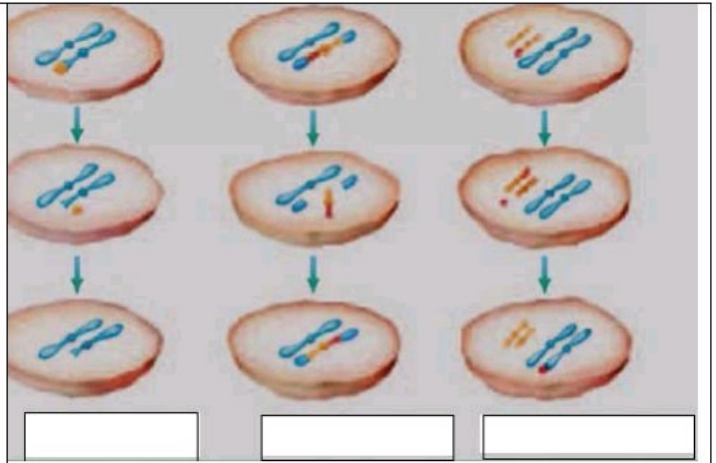
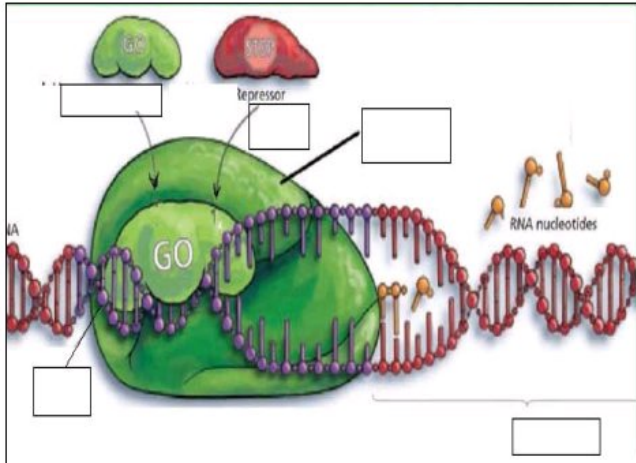
R.M: إعداد











أنماط من الطفرات على مستوى الصبغيات

