



AlTaasis AlSaleem

MARCH
REVISIONS

MATHEMATICS

3RD

2026

اختيارك
الأول في
مصر



ذاكر معنا



ذاكر بطريقة سهلة وممتعة
مع كتاب التأسيس السليم

HOTLINE
012 8888 0390

www.altaasisalsaleem.com

THIRD GRADE
OF PRIMARY SCHOOL

SECOND TERM



قريباً
كتاب التأسيس السليم

Model (1)



First Question 1 Choose the correct answer:

(1) $(3 \times 5) \times 2 = 3 \times (5 \times \dots\dots)$

- (a) 3 (b) 2 (c) 5 (d) 10

(2) $5 \times 13 = 5 \times (9 + \dots\dots)$

- (a) 3 (b) 4 (c) 5 (d) 6

(3) $14 \div \dots\dots = 7$

- (a) 2 (b) 3 (c) 4 (d) 5

(4) $9 \times 0 = \dots\dots$

- (a) 0 (b) 1 (c) 9 (d) 10

(5) If 8 counting items are divided into quarters, each quarter = $\dots\dots$ of the items.

- (a) 8 (b) 4 (c) 2 (d) 16

(6) The shape  is divided into $\dots\dots$

- (a) thirds (b) fourths (c) fifths (d) sixths

(7) $\frac{1}{4} < \dots\dots$

- (a) $\frac{1}{3}$ (b) $\frac{1}{5}$ (c) $\frac{1}{4}$ (d) $\frac{1}{7}$

(8) $\frac{1}{3}$ of the number 18 is $\dots\dots$

- (a) 4 (b) 6 (c) 8 (d) 10

(9) The fraction of the colored parts of the figure  is $\dots\dots$

- (a) $\frac{2}{3}$ (b) $\frac{1}{4}$ (c) $\frac{1}{2}$ (d) $\frac{3}{4}$



Second Question **2** Answer the following:

- (1) Use the number line to represent the fractions ($\frac{1}{4}$ and $\frac{1}{8}$), then compare them using ($>$ or $<$)

$\frac{1}{4}$ $\frac{1}{8}$



- (2) Read and solve:

A teacher has 15 pens. She gave $\frac{1}{5}$ of them to her friend. How many pens did she give to her friend?



Answer:

- (3) Arrange in ascending order (from the least to the greatest).

$\frac{1}{5}, \frac{1}{3}, \frac{1}{7}, \frac{1}{2}$

The order is:

- (4) Find the result: **a** $\frac{3}{9} + \frac{4}{9} =$ **b** $\frac{5}{7} - \frac{4}{7} =$

- (5) Find the perimeter of the opposite figure.

Perimeter =



- (6) Which is longer, half an hour or half a minute?

Answer:

- (7) Nabila bought 3 packs of balloons, each pack has 6 bags of 10 balloons each.

How many balloons did Nabila buy?

Answer:



Model (2)



First Question 1 Choose the correct answer:

(1) $6 \times 15 = 6 \times (7 + \dots)$

- (a) 6 (b) 8 (c) 9 (d) 10

(2) $7 \times \dots = 7$

- (a) 0 (b) 1 (c) 7 (d) 2

(3) $12 \div \dots = 4$

- (a) 1 (b) 2 (c) 3 (d) 4

(4) Hoda has 18 apples. She divided them equally among 6 plates. How many apples are there in each plate?

- (a) 1 (b) 3 (c) 2 (d) 6

(5) There are fifths in one whole.

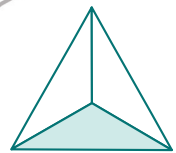
- (a) three (b) four (c) five (d) six

(6) $\frac{3}{8} < \dots$

- (a) $\frac{3}{9}$ (b) $\frac{3}{7}$ (c) $\frac{3}{10}$ (d) $\frac{3}{8}$

(7) The fraction representing the colored part in the shape is

- (a) $\frac{1}{2}$ (b) $\frac{1}{6}$ (c) $\frac{1}{3}$ (d) $\frac{1}{5}$



(8) $\frac{1}{4}$ of a day = hours.

- (a) 6 (b) 8 (c) 10 (d) 12

(9) $(3 \times 4) \times 2 = 3 \times (\dots \times 2)$

- (a) 2 (b) 3 (c) 4 (d) 5



Second Question 2 Answer the following:

(1) Find the missing number.

a $\frac{3}{8} + \frac{\dots}{8} = \frac{5}{8}$

b $1 - \frac{1}{4} = \frac{\dots}{\dots}$

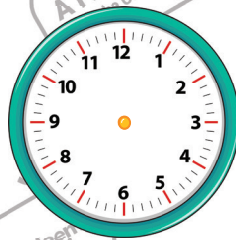
c $\frac{\dots}{\dots} - \frac{3}{5} = \frac{1}{5}$

d $\frac{7}{9} + \frac{\dots}{\dots} = \frac{8}{9}$

(2) Write an equivalent fraction to $\frac{1}{2}$ and its denominator is 8.

Answer:

(3) Draw the clock hands to show the given time.



04 : 15

(4) Ahmed spent a third of an hour taking a shower. How many minutes did Ahmed spend taking a shower?



Answer:

(5) Amgad ate $\frac{1}{2}$ of a cake and Asmaa ate $\frac{1}{5}$ of the same cake. Who ate more?



Answer:

(6) Find by using associative property: $6 \times 2 \times 5$

Answer:

(7) Arrange the following fractions in descending order:

$\frac{3}{11}, \frac{6}{11}, \frac{10}{11}, \frac{1}{11}, \frac{5}{11}$

The order is

Model (3)



First Question 1 Choose the correct answer:

(1) 3×0 3×1

- (a) $>$ (b) $<$ (c) $=$ (d) otherwise

(2) $16 \div \dots = 2$

- (a) 24 (b) 8 (c) 2 (d) 1

(3) $2 \times 5 \times 13 = \dots$

- (a) 30 (b) 13 (c) 130 (d) 100

(4) Huda divided 24 candies equally among her three children.

What is each child's share?

- (a) 12 (b) 8 (c) 6 (d) 4

(5) The number of thirds in one whole is thirds.

- (a) 2 (b) 6 (c) 4 (d) 3

(6) $\frac{1}{6} > \dots$

- (a) $\frac{1}{3}$ (b) $\frac{1}{5}$ (c) $\frac{1}{4}$ (d) $\frac{1}{7}$

(7) $\frac{1}{5}$ of the number 15 =

- (a) 3 (b) 4 (c) 5 (d) 12

(8) $7 \times 12 = 7 \times (9 + \dots)$

- (a) 4 (b) 5 (c) 6 (d) 3

(9) One third one quarter

- (a) $<$ (b) $>$ (c) $=$ (d) otherwise



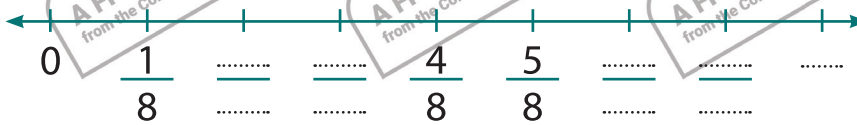
Second Question 2 Answer the following:

- (1) Ahmed bought a box of 21 fruits. The box has the same number of bananas, oranges and apples. Ahmed ate all oranges. How many pieces of fruit are remain?

Answer:



- (2) Complete the missing fractions on the following number line:



- (3) Find the side length of a square whose perimeter is 20 m.

Answer:

- (4) What's the third of 27?

- (5) Find the perimeter of the rectangle whose length is 8 cm and whose width is 4 cm.

The perimeter =

- (6) Find the result of (7×14) :

$7 \times 14 =$

- (7) Use ($>$, $<$ or $=$) to compare $\frac{8}{8}$ $\frac{3}{3}$

Model (4)

First Question 1 Choose the correct answer:

(1) Two thirds =

- (a) $\frac{2}{3}$ (b) $\frac{3}{2}$ (c) $\frac{1}{3}$ (d) 23

(2) Fifth of 40 =

- (a) 5 (b) 8 (c) 9 (d) 20

(3) $\frac{1}{3} + \frac{2}{3}$ $\frac{3}{7} + \frac{2}{7}$

- (a) < (b) > (c) = (d) otherwise

(4) $6 \times \dots = (6 \times 4) + (6 \times 5)$

- (a) 4 (b) 5 (c) 6 (d) 9

(5) $5 \times 8 = 4 \times \dots$

- (a) 40 (b) 5 (c) 10 (d) 8

(6) The perimeter of a square = \times side length.

- (a) 1 (b) 2 (c) 3 (d) 4

(7) $\div 4 = 9$

- (a) 13 (b) 5 (c) 36 (d) 40

(8) $1 = \frac{\dots}{7}$

- (a) 1 (b) 7 (c) 4 (d) 6

(9) $\frac{3}{8} > \dots$

- (a) $\frac{3}{8}$ (b) $\frac{1}{8}$ (c) $\frac{4}{8}$ (d) $\frac{5}{8}$

Second Question 2 Answer the following:

- (1) Divide the number line into sixths and circle $\frac{5}{6}$



- (2) Solve the following to find the unknown number:

$$2 \times (5 \times \dots) = 50$$

- (3) **Find the result:**

a $\frac{6}{9} - \frac{3}{9} = \dots$

b $\frac{3}{6} - \frac{2}{6} = \dots$

c $\frac{5}{12} + \frac{2}{12} = \dots$

d $\frac{9}{13} + \frac{3}{13} = \dots$

- (4) Rania divided a pizza equally among 8 friends.

Write the fraction of the share of each friend.

The fraction is:



- (5) Find the width of the rectangle whose length is 6 cm and whose perimeter is 20 cm.

Answer:

- (6) Mona bought a bar of chocolate for 45 L.E. and bought 6 bags of candies. If the price of each bag is 10 L.E.

How much money did she pay in all?

Answer:



- (7) Find the result of $4 \times 5 \times 2$ using your preferred strategy.

.....

Model (5)



First Question 1 Choose the correct answer:

(1) Which of the following is equal to one ninth?

- (a) $\frac{1}{2}$ (b) $\frac{1}{5}$ (c) $\frac{1}{4}$ (d) $\frac{1}{9}$

(2) $5 \times 6 \times 1 = \dots\dots\dots$

- (a) 7 (b) 15 (c) 30 (d) 16

(3) $24 \div \dots\dots\dots = 3$

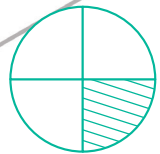
- (a) 4 (b) 3 (c) 8 (d) 6

(4) $4) 6 \times \dots\dots\dots = (6 \times 4) + (6 \times 5)$

- (a) 4 (b) 5 (c) 6 (d) 9

(5) The fraction that represents the shaded part in the figure is $\dots\dots\dots$

- (a) $\frac{1}{6}$ (b) $\frac{1}{4}$ (c) $\frac{1}{3}$ (d) $\frac{1}{2}$



(6) $\frac{3}{7} < \dots\dots\dots$

- (a) $\frac{3}{9}$ (b) $\frac{3}{8}$ (c) $\frac{3}{7}$ (d) $\frac{3}{6}$

(7) $\frac{1}{8}$ of 56 = $\dots\dots\dots$

- (a) 8 (b) 7 (c) 3 (d) 6

(8) The number of tenths in one whole = $\dots\dots\dots$ tenths.

- (a) 1 (b) 10 (c) 20 (d) 50

(9) $\frac{1}{4}$ of watermelon $\frac{1}{4}$ of orange

- (a) > (b) < (c) = (d) otherwise



Second Question 2 Answer the following:

- (1) Janna baked 45 loaves of bread and wanted to share them equally among 5 of her friends. How many loaves will each friend get?

Answer:

- (2) Find the perimeter of a rectangle whose length is 6 cm and whose width is 3 cm.

Answer:

- (3) A zoo has 159 animals. There are 35 monkeys and 24 lions and the rest are tigers. How many tigers are there in the zoo?

Answer:

- (4) Divide the following shape into 4 equal parts.



- (5) Write the missing number which makes the fraction equivalent to half.

$$\frac{6}{\dots} = \frac{1}{2}$$

- (6) Laila wants to distribute a piece of chocolate equally among her 3 brothers. Represent the way will she use to divide the piece of chocolate.



- (7) A square has a side length of 7 m. Find its perimeter.

Perimeter =

AlTaasis AlSaleem



YOUR NO.1
CHOICE
IN EGYPT

Model Answers

www.altaasisalsaleem.com

شركة التأسيس السليم

GET IT ON
Google Play

Download on the
App Store



Study with us:

Model (1)



First Question 1 Choose the correct answer:

(1) $(3 \times 5) \times 2 = 3 \times (5 \times \dots)$

- (a) 3 (b) 2 (c) 5 (d) 10

(2) $5 \times 13 = 5 \times (9 + \dots)$

- (a) 3 (b) 4 (c) 5 (d) 6

(3) $14 \div \dots = 7$

- (a) 2 (b) 3 (c) 4 (d) 5

(4) $9 \times 0 = \dots$

- (a) 0 (b) 1 (c) 9 (d) 10

(5) If 8 counting items are divided into quarters, each quarter = \dots of the items.

- (a) 8 (b) 4 (c) 2 (d) 16

(6) The shape  is divided into \dots

- (a) thirds (b) fourths (c) fifths (d) sixths

(7) $\frac{1}{4} \leftarrow \dots$

- (a) $\frac{1}{3}$ (b) $\frac{1}{5}$ (c) $\frac{1}{4}$ (d) $\frac{1}{7}$

(8) $\frac{1}{3}$ of the number 18 is \dots

- (a) 4 (b) 6 (c) 8 (d) 10

(9) The fraction of the colored parts of the figure  is \dots

- (a) $\frac{2}{3}$ (b) $\frac{1}{4}$ (c) $\frac{1}{2}$ (d) $\frac{3}{4}$



Second Question 2 Answer the following:

- (1) Use the number line to represent the fractions ($\frac{1}{4}$ and $\frac{1}{8}$), then compare them ($>$ or $<$).

$$\frac{1}{4} > \frac{1}{8}$$



- (2) Read and solve:

A teacher has 15 pens. She gave $\frac{1}{5}$ of them to her friend. How many pens did she give to her friend?



Answer: **Number of pens = $\frac{1}{5} \times 15 = 15 \div 5 = 3$ pens.**

- (3) Arrange in ascending order (from the least to the greatest).

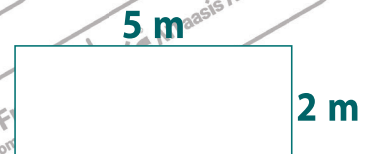
$$\frac{1}{5}, \frac{1}{3}, \frac{1}{7}, \frac{1}{2}$$

The order is: $\frac{1}{7}, \frac{1}{5}, \frac{1}{3}, \frac{1}{2}$

- (4) Find the result: **a** $\frac{3}{9} + \frac{4}{9} = \frac{7}{9}$ **b** $\frac{5}{7} - \frac{4}{7} = \frac{1}{7}$

- (5) Find the perimeter of the opposite figure.

$$\text{Perimeter} = 2 \times (L + W) = 2 \times (5 + 2) = 2 \times 7 = 14 \text{ m}$$



- (6) Which is longer, half an hour or half a minute?

Answer: **half an hour is longer.**

- (7) Nabila bought 3 packs of balloons, each pack has 6 bags of 10 balloons each.

How many balloons did Nabila buy?

Answer: **Number of balloons = $(3 \times 6) \times 10 = 180$ balloons.**



Model (2)

First Question 1 Choose the correct answer:

(1) $6 \times 15 = 6 \times (7 + \dots)$

- (a) 6 (b) 8 (c) 9 (d) 10

(2) $7 \times \dots = 7$

- (a) 0 (b) 1 (c) 7 (d) 2

(3) $12 \div \dots = 4$

- (a) 1 (b) 2 (c) 3 (d) 4

(4) Hoda has 18 apples. She divided them equally among 6 plates. How many apples are there in each plate?

- (a) 1 (b) 3 (c) 2 (d) 6

(5) There are \dots fifths in one whole.

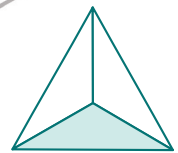
- (a) three (b) four (c) five (d) six

(6) $\frac{3}{8} < \dots$

- (a) $\frac{3}{9}$ (b) $\frac{3}{7}$ (c) $\frac{3}{10}$ (d) $\frac{3}{8}$

(7) The fraction representing the colored part in the shape is \dots

- (a) $\frac{1}{2}$ (b) $\frac{1}{6}$ (c) $\frac{1}{3}$ (d) $\frac{1}{5}$



(8) $\frac{1}{4}$ of a day = \dots hours.

- (a) 6 (b) 8 (c) 10 (d) 12

(9) $(3 \times 4) \times 2 = 3 \times (\dots \times 2)$

- (a) 2 (b) 3 (c) 4 (d) 5

Second Question **2** Answer the following:

(1) Find the missing number.

a $\frac{3}{8} + \frac{2}{8} = \frac{5}{8}$

b $1 - \frac{1}{4} = \frac{3}{4}$

c $\frac{4}{5} - \frac{3}{5} = \frac{1}{5}$

d $\frac{7}{9} + \frac{1}{9} = \frac{8}{9}$

(2) Write an equivalent fraction to $\frac{1}{2}$ and its denominator is 8.

Answer: $\frac{4}{8}$

(3) Draw the clock hands to show the given time.



04 : 15

(4) Ahmed spent a third of an hour taking a shower. How many minutes did Ahmed spend taking a shower?



Answer: $\frac{1}{3}$ of 60 minutes = $\frac{1}{3} \times 60 = 20$ minutes.

(5) Amgad ate $\frac{1}{2}$ of a cake and Asmaa ate $\frac{1}{5}$ of the same cake. Who ate more?

Answer: **Amgad ate more** $\frac{1}{2} > \frac{1}{5}$



(6) Find by using associative property: $6 \times 2 \times 5$

Answer: $6 \times (2 \times 5) = 6 \times 10 = 60$

(7) Arrange the following fractions in descending order:

$\frac{3}{11}, \frac{6}{11}, \frac{10}{11}, \frac{1}{11}, \frac{5}{11}$

The order is: $\frac{10}{11}, \frac{6}{11}, \frac{5}{11}, \frac{3}{11}, \frac{1}{11}$

Model (3)

First Question 1 Choose the correct answer:

(1) 3×0 3×1

- (a) $>$ (b) \leq (c) $=$ (d) otherwise

(2) $16 \div \dots = 2$

- (a) 24 (b) **8** (c) 2 (d) 1

(3) $2 \times 5 \times 13 = \dots$

- (a) 30 (b) 13 (c) **130** (d) 100

(4) Huda divided 24 candies equally among her three children.

What is each child's share?

- (a) 12 (b) **8** (c) 6 (d) 4

(5) The number of thirds in one whole is thirds.

- (a) 2 (b) 6 (c) 4 (d) **3**

(6) $\frac{1}{6} > \dots$

- (a) $\frac{1}{3}$ (b) $\frac{1}{5}$ (c) $\frac{1}{4}$ (d) **$\frac{1}{7}$**

(7) $\frac{1}{5}$ of the number 15 =

- (a) **3** (b) 4 (c) 5 (d) 12

(8) $7 \times 12 = 7 \times (9 + \dots)$

- (a) 4 (b) 5 (c) 6 (d) **3**

(9) One third one quarter

- (a) $<$ (b) \geq (c) $=$ (d) otherwise

Second Question 2 Answer the following:

- (1) Ahmed bought a box of 21 fruits. The box has the same number of bananas, oranges and apples. Ahmed ate all oranges. How many pieces of fruit are remain?

Answer: **Number of oranges = $21 \div 3 = 7$ oranges.**

Remaining fruits = $21 - 7 = 14$ fruits.



- (2) Complete the missing fractions on the following number line:



- (3) Find the side length of a square whose perimeter is 20 m.

Answer: **Side length = $P \div 4 = 20 \div 4 = 5$ m**

- (4) What's the third of 27? **$\frac{1}{3}$ of 27 = $27 \div 3 = 9$**

- (5) Find the perimeter of the rectangle whose length is 8 cm and whose width is 4 cm.

The perimeter = **$2 \times (L + W) = 2 \times (8 + 4) = 2 \times 12 = 24$ cm**

- (6) Find the result of (7×14) :

$7 \times 14 = 7 \times (10 + 4) = (7 \times 10) + (7 \times 4) = 70 + 28 = 98$

- (7) Use ($>$, $<$ or $=$) to compare

$\frac{8}{8}$ $\frac{3}{3}$

Model (4)

First Question 1 Choose the correct answer:

(1) Two thirds =

- (a) $\frac{2}{3}$ (b) $\frac{3}{2}$ (c) $\frac{1}{3}$ (d) 23

(2) Fifth of 40 =

- (a) 5 (b) 8 (c) 9 (d) 20

(3) $\frac{1}{3} + \frac{2}{3}$ $\frac{3}{7} + \frac{2}{7}$

- (a) < (b) > (c) = (d) otherwise

(4) $6 \times \dots = (6 \times 4) + (6 \times 5)$

- (a) 4 (b) 5 (c) 6 (d) 9

(5) $5 \times 8 = 4 \times \dots$

- (a) 40 (b) 5 (c) 10 (d) 8

(6) The perimeter of a square = \times side length.

- (a) 1 (b) 2 (c) 3 (d) 4

(7) $\div 4 = 9$

- (a) 13 (b) 5 (c) 36 (d) 40

(8) $1 = \frac{\dots}{7}$

- (a) 1 (b) 7 (c) 4 (d) 6

(9) $\frac{3}{8} > \dots$

- (a) $\frac{3}{8}$ (b) $\frac{1}{8}$ (c) $\frac{4}{8}$ (d) $\frac{5}{8}$

Second Question 2 Answer the following:

- (1) Divide the number line into sixths and circle $\frac{5}{6}$



- (2) Solve the following to find the unknown number:

$$2 \times (5 \times \mathbf{5}) = 50$$

- (3) Find the result:

a $\frac{6}{9} - \frac{3}{9} = \frac{\mathbf{3}}{\mathbf{9}}$

b $\frac{3}{6} - \frac{2}{6} = \frac{\mathbf{1}}{\mathbf{6}}$

c $\frac{5}{12} + \frac{2}{12} = \frac{\mathbf{7}}{\mathbf{12}}$

d $\frac{9}{13} + \frac{3}{13} = \frac{\mathbf{12}}{\mathbf{13}}$

- (4) Rania divided a pizza equally among 8 friends.
Write the fraction of the share of each friend.

The fraction is: $\frac{\mathbf{1}}{\mathbf{8}}$



- (5) Find the width of the rectangle whose length is 6 cm and whose perimeter is 20 cm.

Answer: $L + W = p \div 2 = 20 \div 2 = 10 \text{ cm}$, $W = 10 - 6 = 4 \text{ cm}$

- (6) Mona bought a bar of chocolate for 45 L.E. and bought 6 bags of candies. If the price of each bag is 10 L.E.
How much money did she pay in all?

Answer: **Total price of the candies = $6 \times 10 = 60 \text{ L.E.}$**

She paid = $45 + 60 = 105 \text{ L.E.}$



- (7) Find the result of $4 \times 5 \times 2$ using your preferred strategy.

$4 \times (5 \times 2) = 4 \times 10 = 40$ (Associative property)

Model (5)

First Question 1 Choose the correct answer:

(1) Which of the following is equal to one ninth?

- (a) $\frac{1}{2}$ (b) $\frac{1}{5}$ (c) $\frac{1}{4}$ (d) $\frac{1}{9}$

(2) $5 \times 6 \times 1 =$

- (a) 1 (b) 15 (c) 30 (d) 16

(3) $24 \div$ = 3

- (a) 4 (b) 3 (c) 8 (d) 6

(4) $4) 6 \times$ = $(6 \times 4) + (6 \times 5)$

- (a) 4 (b) 5 (c) 6 (d) 9

(5) The fraction that represents the shaded part in the figure is

- (a) $\frac{1}{6}$ (b) $\frac{1}{4}$ (c) $\frac{1}{3}$ (d) $\frac{1}{2}$



(6) $\frac{3}{7} <$

- (a) $\frac{3}{9}$ (b) $\frac{3}{8}$ (c) $\frac{3}{7}$ (d) $\frac{3}{6}$

(7) $\frac{7}{8}$ of 56 =

- (a) 8 (b) 7 (c) 3 (d) 6

(8) The number of tenths in one whole = tenths.

- (a) 1 (b) 10 (c) 20 (d) 50

(9) $\frac{1}{4}$ of watermelon $\frac{1}{4}$ of orange

- (a) $>$ (b) $<$ (c) $=$ (d) otherwise

Second Question 2 Answer the following:

- (1) Janna baked 45 loaves of bread and wanted to share them equally among 5 of her friends. How many loaves will each friend get?

Answer: **Number of loaves = $45 \div 5 = 9$ loaves.**

- (2) Find the perimeter of a rectangle whose length is 6 cm and whose width is 3 cm.

Answer: **perimeter = $2 \times (L + W) = 2 \times (6 + 3) = 2 \times 9 = 18$ cm**

- (3) A zoo has 159 animals. There are 35 monkeys and 24 lions and the rest are tigers. How many tigers are there in the zoo?

Answer: **Number of monkeys and lions = $35 + 24 = 59$**

Number of tigers = $159 - 59 = 100$ tigers

- (4) Divide the following shape into 4 equal parts.



- (5) Write the missing number which makes the fraction equivalent to half.

$$\frac{6}{12} = \frac{1}{2}$$

- (6) Laila wants to distribute a piece of chocolate equally among her 3 brothers. Represent the way will she use to divide the piece of chocolate.



The share of each brother is $\frac{1}{3}$ of the chocolate

- (7) A square has a side length of 7 m. Find its perimeter.

Perimeter = **$4 \times \text{side length} = 4 \times 7 = 28$ m.**